

BAUHINIA PARK

CHAROLAIS & ANGUS

ANNUAL BULL SALE

10.30am, Wednesday 20th August 2025

Ag-Grow Bull Selling Complex, Emerald Qld



90 BULLS - 45 Charolais & 45 Angus

[**www.bauhiniaparkbulls.com.au**](http://www.bauhiniaparkbulls.com.au)



Lot 3 (PP) (R/F)



Lot 4 (P) (R/F)

***Easy keeping Cattle with Performance,
Weight for Age & Excellent Constitution.
Bred for Central & Western Queensland.***



Lot 56 (P)



Lot 49 (P)

BAUHINIA PARK CHAROLAIS & ANGUS

21ST ANNUAL BULL SALE

10.30am, Wednesday 20th August 2025

Ag-Grow Bull Selling Complex, Capricorn Highway, Emerald Qld

Bauhinia Park Charolais

Ryan & Rachel Holzwart

'Kensington', Yamala via Emerald Qld

PO Box 965, Emerald Qld 4720

Ph: 0447 313 126

ryan@bauhiniaparkbulls.com.au

Bauhinia Park Angus

Jeff & Raelea Holzwart

'Grandridge', Yamala via Emerald Qld

PO Box 773, Emerald Qld 4720

Ph: 0429 822 378

bauhinia-park@bigpond.com



Selling Agents - RBV Rural

Matthew Beard - 0428 765 687

Terry Ray - 0427 821 177

Bryton Virgo - 0477 318 224

Tony Prentice - 0417 709 778

Lachie Spry - 0438 873 493

Interfaced with



AuctionsPlus

www.bauhiniaparkbulls.com.au



Welcome

A warm welcome to our 2025 Annual Bull Sale.

Our twenty-first sale - where has the time gone? Firstly, a huge thank you to all who supported our 20th Anniversary Sale last year - we couldn't have been happier with the results.

On a family note, we would like to congratulate our younger daughter/sister Emma on her engagement to partner Nic. We will be celebrating their wedding on the 9th August, so by the time the bull sale comes around, they will be officially hitched!

The past twenty-one years has had its highs and lows as with everything in life, but likewise it has seen evolutions in many ways that present exciting innovations for the beef industry. The use of science and geonomics' has advanced in leaps and bounds, and there is so much more data and opportunity in the livestock space than was ever dreamed about 21 years ago.

As we said last year, the great thing about the cattle industry for all these innovations is that good cattle are still good cattle, and good cattlemen (young or old, male or female) are still good cattlemen. From our stud's point of view, we are so blessed to have so many of these good cattlemen from our area who with their families support us year after year. Thank you one and all.

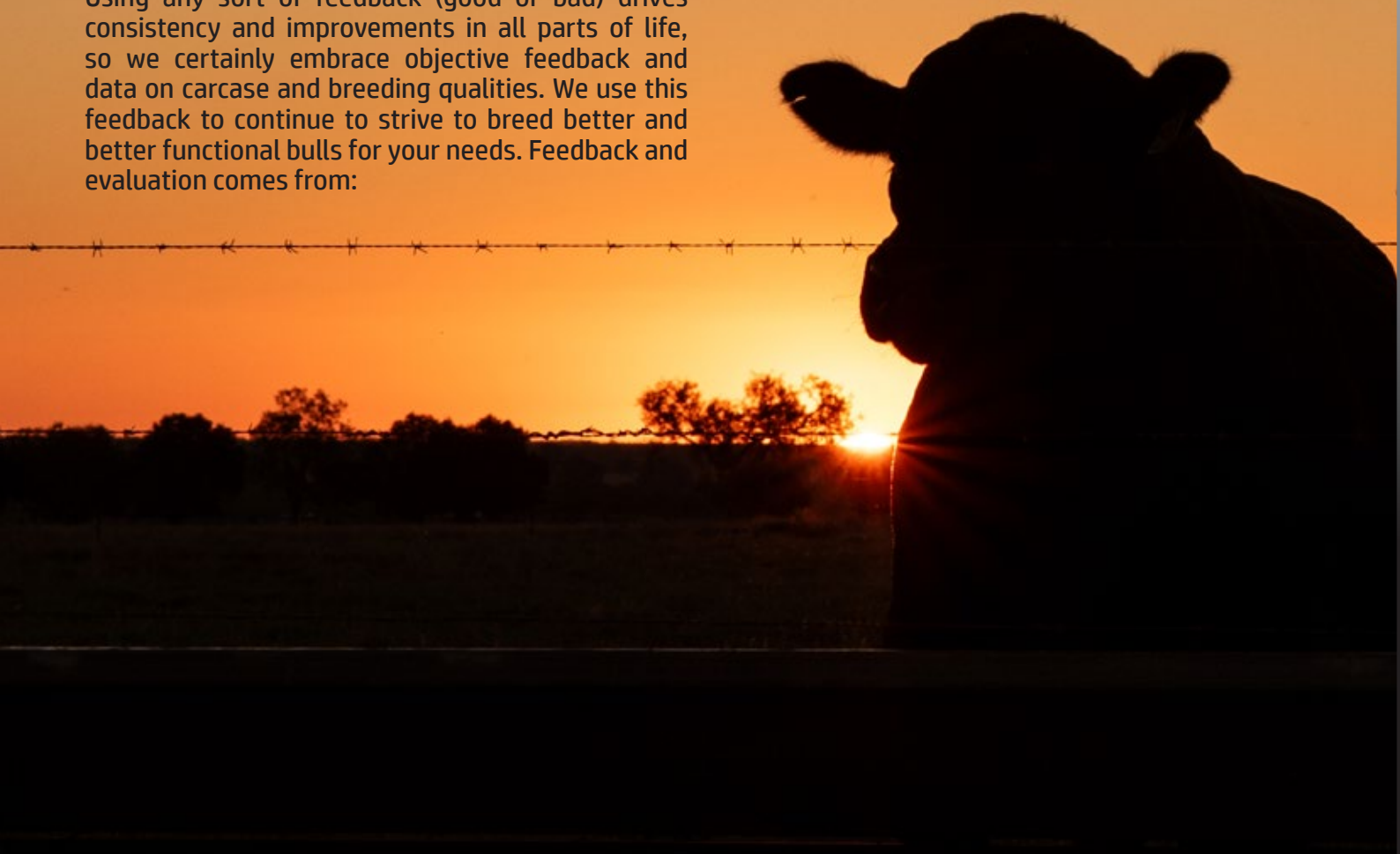
Using any sort of feedback (good or bad) drives consistency and improvements in all parts of life, so we certainly embrace objective feedback and data on carcase and breeding qualities. We use this feedback to continue to strive to breed better and better functional bulls for your needs. Feedback and evaluation comes from:

1. Data from EBV's for traits we are looking for within our stud(s) with an industry focus.
2. Real time scanned data for sires we buy, and also for our own sale bulls (scanned data will be available by sale time).
3. Feedback from entering feedlot trials, together with MSA feedback from our processors.
4. Fertility from years of controlled mating intervals.
5. Structure review for correctness for longevity.
6. Strength of breeding from sires and dams.
7. Sensible calving.
8. Quiet temperament.

Using all this information, we then breed for Central and Western Queensland environment(s) and conditions with producer needs at the forefront.

We look forward to seeing you at our 21st Annual Sale. Please stay for complimentary lunch in the renowned Ag-Grow Woolshed. If you are unable to attend, we will be operating under AuctionsPlus again this year. Please also feel free to ring us to arrange on property inspections prior to the sale or to have a yarn about the genetics we have been using.

Jeff and Raelea, Ryan and Rachel Holzwart



Sale Information

Inspection:

Inspection of the bulls is most welcome prior to the sale by arrangement and at the Ag-Grow Bull Selling Complex, Emerald Qld, from 2pm the day before the sale.

AuctionsPlus:

Our sale will be interfaced with AuctionsPlus again this year - www.auctionsplus.com.au.

Refreshments & Lunch:

We would like to take time to enjoy the sale and spend time with clients and friends, so please join us for complimentary morning tea prior to the sale and a free post-sale lunch, maybe even a beer or two.

Supplementary Sheet:

A Supplementary Sheet with the following information will be posted online prior to the sale and available on sale day:

- Sale weight
- Eye muscle area (EMA), rump fat, rib fat and intra muscular fat (IMF). (All bulls will be scanned prior to the sale by certified scanning technician David Reid)
- Scrotal size measurements
- Semen motility
- Morphology tested

Health and Vaccinations:

Sale bulls are vaccinated with:

- 3 day
- 7-in-1
- 3 germ blood
- Vibrio

The bulls will be Dectomax injected ready for tick clearance.

Sale Day Safety:

Your safety is important to us. Our cattle are quiet however animal behaviour can be unpredictable at times. Noise and large crowds of people can make animals react differently so please be mindful of the bull if you enter their yards. Children should be supervised at all times.

Guarantee:

We back our bulls 100% and are extremely tough on evaluations and making sure the bulls are structurally sound and fertile. All bulls will be semen tested, breeding soundness evaluated and are guaranteed breeders. If a problem occurs against the breeding ability of a bull within the first full breeding year of purchase, a replacement animal of comparable value or bull credit for the following sale will be given if required. Please contact us if you have any issues.

Outside Agents Rebate:

The following rebates are available to registered outside agents for genuine introductions:

- A 4% rebate is available for agents who introduce potential purchasers in writing 24 hours prior to the sale, attend the sale with or buy on behalf of their clients, and settle on behalf of their clients within 7 days.
- A 2% rebate is available for agents who introduce potential purchasers in writing 24 hours prior to the sale, and settle on behalf of their clients within 7 days.

(These clauses will be strictly enforced by the sale vendors).

Delivery:

Free freight available to most local areas, including Alpha, Rolleston, Springsure and Clermont. Bulls can be cleared at Emerald Saleyards if required. Please talk to the agents, Jeff or Ryan for delivery assistance or leave instructions at the registration desk at the sale.

Biosecurity:

Bauhinia Park Studs are currently operating under a J-BAS 6 score. We are aware of the industry requirements and have a plan in place. We are willing to meet the needs of purchasers. A health declaration will be provided with the usual NVD on sale day.

Breedplan:

Our studs are Breedplan recorded, and Estimated Breeding Values (EBVs) are printed in the catalogue.

Disclaimer - Attention Buyer:

Every care has been taken during the compilation of this catalogue to ensure that the information is correct. However, no responsibility will be accepted for errors that may have occurred.

Animal details included in this catalogue, including but not limited to pedigree, DNA information, Estimated Breeding Values (EBVs) and Index values, are based on information provided by the breeder or owner of the animal. Whilst all reasonable care has been taken to ensure that the information provided in this catalogue was correct at the time of publication, Charolais Society of Australia, Angus Australia and the vendors will assume no responsibility for the accuracy or completeness of the information, nor for the outcome (including consequential loss) of any action taken based on this information.

Charolais Bulls

Lots 1-45



2024 Top Price Bull - Bauhinia Park Target (P/S) (R/F).

Welcome to our Annual Bull Sale.

Another year has flown by and we are very pleased with the draft of Charolais bulls on offer for 2025. The quality and consistency throughout the catalogue are testament to our commitment of Charolais breeding for the past 20 years, and we are very happy with how the Charolais herd has progressed over this time.

After years of breeding Stud Charolais our philosophy remains simple - breed high performance cattle with the right fundamentals. We place a huge emphasis on fertility & constitution within our cow herd to ensure these traits are passed down the line through to commercial producers that buy our bulls. Weight for age, natural muscling, good temperament, and ability to finish are also key traits we aim to breed in our bulls. We work hard to source the best possible sires to add to our operation that suit the needs for our area and the objectives outlined above.

We continue to receive good feedback about the progeny of our bulls, consistently topping the local weaner and feeder sales and gaining good feedback in feedlot competitions. We were very proud to achieve highest MSA grading for one of our steers in the recent QLD region Charolais Carcase competition from a pool of 140 steers. We believe the Charolais' place in a herd is to add muscle, weight, and yield, without sacrificing desirable carcase traits.

The bulls on offer this year are true industry focused beef bulls with the great shape and the constitution we strive to produce. They are well developed, fit, healthy and ready to work, and we are extremely confident they will perform well for their new homes. The 45 Charolais bulls in the sale include 29 polls and 16 red factors. The sire lines represented in this year's team include quality proven genetics from 4 Ways Mario (P) and ANC Q Pac (P), along with exciting new sires Moongool MR R251 & Bauhinia Park Revolver. Revolver is a bull we retained to use on heifer's but has fast become much more than just a 'heifer bull'. His sons in this sale are very impressive and certainly some to keep an eye out for.

As always, we are more than happy to discuss your genetic needs and enjoy being part of your bull selection process. Please feel free to come and inspect the bulls any time prior to the sale via appointment with us or jump online to view photos and videos of the bulls.

Hope to see you August 20th.

Ryan & Rachel Holzwart



Reference Sires

4 Ways Mario (P) (R/F)



S: TR Red Smoke (P) (R/F)
Sire: Moongool Jag (P) (R/F)
D: Moongool Rose

S: 4 Ways Adoo
Dam: 4 Ways Annette D72E
D: Mount William Annette

We can't say enough about the positive impact Mario has had on the stud. He passes on his same eye catching phenotype, soft muscle pattern and overall balance onto his progeny.



The Mario daughters are proving to be excellent breeders - they have beautiful udders and plenty of milk producing good heavy weaners. His sons are good, honest, soundly made bulls with that extra touch of class. To continue on Mario's legacy we have retained an awesome son in Bauhinia Park Tribute. We also think Lot 5 in this year's sale is one of his best yet!

Pictured left: Mario at 18 months.

June 2025 Australasian Charolais Breedplan

	Birth Wt.	200 Day	400 Day	600 Day	Mat. Cow	Milk (kg)	Carcase	EMA	Rib Fat	Rump Fat	Beef Yield	IMF
EBV	+1.1	+8	+21	+23	+19	+6	+18	+3.2	0.0	-0.2	+1.0	+0.5
Acc	77%	91%	85%	88%	76%	69%	72%	54%	68%	67%	59%	54%

Bauhinia Park Revolver (P)



S: NWMSU Doc Silver 362 (P)
Sire: Paringa Harvey H338 (P)
D: Paringa Bluegrass D140

S: Ascot Gunn G144E (P)
Dam: River Run Nestle (P)
D: River Run Jaffa (P)

We purchased Revolver's dam as a heifer from the River Run Stud after taking a liking to her back in 2020. She then went on to breed Revolver and several beautiful replacement heifer calves since.

Revolver has been an awesome inclusion to our stud. He is our go-to heifer bull and has proved himself to be a calving ease specialist. The combination of low birth weight, sheer performance and carcass attributes Revolver puts into his progeny make him truly unique for a Charolais sire. This is reinforced by his tremendous breed plan numbers, being top 6% of the breed for Milk, 200, 400 and 600 Day weights and top 1% of the breed for IMF! This is his first year of sons and they are all quality.

June 2025 Australasian Charolais Breedplan

	Birth Wt.	200 Day	400 Day	600 Day	Mat. Cow	Milk (kg)	Carcase	EMA	Rib Fat	Rump Fat	Beef Yield	IMF
EBV	+0.1	+20	+46	+61	+50	+15	+33	+0.8	+1.4	+1.9	-1.7	+1.5
Acc	75%	79%	77%	80%	71%	61%	68%	58%	70%	69%	62%	58%

Reference Sires

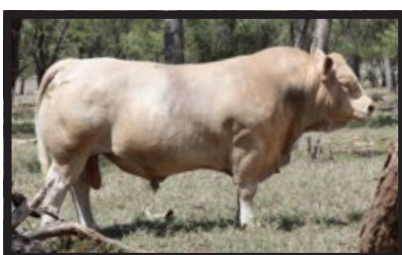
ANC Q Pac (P)



S: ANC Flair (P)
Sire: ANC Mac (P)
D: ANC Cosmos Illusion

S: Sedalia Chancellor
Dam: ANC Wilmuri
D: Nargoon Milmur

Q Pac was purchased as the standout bull from the 2021 ANC sale for the top price of \$45,000. Q Pac is polled, Full French & without a doubt one of the most consistent sires we have used to date.



Q Pac is unique for his thick, deep body of beef, yet remains so soft and supple with a brilliant head carriage and ton of sire appeal. He also has a beautiful temperament and great mobility which he is passing onto his progeny. We're very happy with the Q Pac sons in this year's sale, they are real crossbreeding machines!

Pictured left: Q Pac's sire - ANC Mac (P).

June 2025 Australasian Charolais Breedplan

	Birth Wt.	200 Day	400 Day	600 Day	Mat. Cow	Milk (kg)	Carcase	EMA	Rib Fat	Rump Fat	Beef Yield	IMF
EBV	-0.4	+12	+15	+20	+41	-6	+16	+1.6	+0.4	+0.4	+0.3	-0.7
Acc	84%	88%	82%	86%	75%	63%	70%	56%	72%	71%	61%	56%

Moongool MR R251 (P) (RF)



S: Jojoba (P)
Sire: GDA Parfait (P)
D: Impetuese

S: Palgrove Delamere
Dam: Moongool J318
D: Moongool E318

A classy, polled, red factor \$40,000 purchase by the record breaking full French sire Parfait. R251 is a debut sire who has stamped his progeny with plenty of bone, meat and robust phenotypes. Sons display a nice mix of power and softness whilst his daughters remain nice feminine types. R251 has several top-quality sons in this year's sale that should be well received by commercial cattlemen.

Buyer's please note: Like many red factor Charolais sires, R251 does throw some broken colour into his progeny.

June 2025 Australasian Charolais Breedplan

	Birth Wt.	200 Day	400 Day	600 Day	Mat. Cow	Milk (kg)	Carcase	EMA	Rib Fat	Rump Fat	Beef Yield	IMF
EBV	+2.9	+17	+28	+36	+51	-2	+22	+1.4	-1.6	-2.8	+1.6	-0.7
Acc	70%	75%	70%	76%	65%	50%	62%	46%	58%	57%	51%	45%

Lot 1**Bauhinia Park Universe (P)**

ID: BAU23U6E **Birth Date:** 15/07/2023
Colour: White **DNA:** BPAF

S: Paringa Harvey H338 (P)
Sire: Bauhinia Park Revolver (P)
D: River Run Nestle (P)

S: 4 Ways Mario (P)
Dam: Bauhinia Park Sandra 24
D: Bauhinia Park Sandra 14



Comments: Beautiful polled bull to start our 2025 sale. He is very long bodied with great head carriage and a real sire's presence. The first Revolver son to sell through the ring - a sire bull we have been using over our maiden heifers with awesome results. Revolver progeny are slick coated, easy doing cattle with plenty of performance and data to burn! This bull's dam is a quality Mario daughter who has gone on to wean another top calf. Universe is a great all-rounder with a beautiful temperament.

Pictured right: Bauhinia Park Revolver (P) - Sire of Lots 1, 2, 3, 4, 7, 10, 15, 17, 31.

**June 2025 Australasian Charolais Breedplan**

	Birth Wt.	200 Day	400 Day	600 Day	Mat. Cow	Milk (kg)	Carcase	EMA	Rib Fat	Rump Fat	Beef Yield	IMF
EBV	+0.6	+14	+32	+43	+37	+10	+25	+1.7	+0.6	+0.7	-0.4	+0.9
Acc	55%	60%	54%	55%	50%	43%	45%	37%	45%	44%	38%	36%

Purchaser: Price: \$.....

Lot 2**Bauhinia Park Union Jack (P)**

ID: BAU23U9E **Birth Date:** 12/07/2023
Colour: White **DNA:** BPAF

S: Paringa Harvey H338 (P)
Sire: Bauhinia Park Revolver (P)
D: River Run Nestle (P)

S: Kenmere Nuptune (P)
Dam: Bauhinia Park Gem 15 (P)
D: Bauhinia Park D52E (P)



Comments: Take a look at this big, strong, slick coated polled bull. Displays a wonderful depth of body with plenty of natural muscle expression and strong topline. Out of a top quality young cow, he has been one of the heaviest in the draft since weaning. Whether it's sale topping weaners or heavy bullocks, this bull is sure to add value in any operation!

Pictured right: Kenmere Nuptune (P) - Grandsire of Lots 2, 8, 28, 34 and 42.

**June 2025 Australasian Charolais Breedplan**

	Birth Wt.	200 Day	400 Day	600 Day	Mat. Cow	Milk (kg)	Carcase	EMA	Rib Fat	Rump Fat	Beef Yield	IMF
EBV	+0.3	+18	+35	+48	+50	+13	+29	+2.1	+0.5	+0.5	-0.1	+0.6
Acc	58%	59%	56%	57%	52%	45%	46%	39%	47%	46%	40%	38%

Purchaser: Price: \$.....

Lot 3

Bauhinia Park United (PP) (R/F)

ID: BAU23U28E **Birth Date:** 18/07/2023
Colour: Red factor **DNA:** BPAF

S: Paringa Harvey H338 (P)
Sire: Bauhinia Park Revolver (P)
D: River Run Nestle (P)

S: 4 Ways Mario (P)
Dam: Bauhinia Park Prim 16 (P)
D: Bauhinia Park Prim 9



Comments: A homozygous polled, red factor Revolver son we have admired since he was a calf. A very smooth fronted bull with plenty of style & sire's outlook. Displays great length & softness with a well rounded hindquarter & tidy sheath. Our Mario females are proving to be wonderful fertile cows with great udders and plenty of milk. All backed by a great curve bending set of performance EBV's!



June 2025 Australasian Charolais Breedplan

	Birth Wt.	200 Day	400 Day	600 Day	Mat. Cow	Milk (kg)	Carcase	EMA	Rib Fat	Rump Fat	Beef Yield	IMF
EBV	+0.9	+18	+38	+51	+50	+11	+30	+1.7	+0.6	+0.7	-0.4	+0.9
Acc	55%	59%	54%	56%	49%	43%	45%	37%	45%	44%	38%	36%

Purchaser: Price: \$.....

Lot 4

Bauhinia Park Umpire (P) (R/F)

ID: BAU23U12E **Birth Date:** 15/07/2023
Colour: Red factor **DNA:** BPAF

S: Paringa Harvey H338 (P)
Sire: Bauhinia Park Revolver (P)
D: River Run Nestle (P)

S: ANC Lastovski
Dam: Bauhinia Park Laura 16 (P)
D: Bauhinia Park Laura 9 (P)



Comments: Without doubt one of the easiest doing bulls we have produced. Umpire is a bull with some serious shape and carcass merit! He has inherited the same bold spring of rib and natural muscle expression from his Lastovski dam, coupled with the extra cover, performance data and functionality of the Revolver progeny. A power of beef, yet still remains soft and supple with a brilliant slick skin type and great temperament. A great asset to any breeding program!



June 2025 Australasian Charolais Breedplan

	Birth Wt.	200 Day	400 Day	600 Day	Mat. Cow	Milk (kg)	Carcase	EMA	Rib Fat	Rump Fat	Beef Yield	IMF
EBV	+0.9	+21	+43	+61	+65	+12	+36	+2.2	+0.4	+0.4	-0.1	+0.8
Acc	55%	59%	54%	55%	49%	44%	45%	37%	44%	43%	38%	36%

Purchaser: Price: \$.....

Lot 5**Bauhinia Park Unlimited (P) (R/F)**

ID: BAU23U38E **Birth Date:** 20/08/2023
Colour: Red factor **DNA:** BPAF

S: Moongool Jag (P)
Sire: 4 Ways Mario (P)
D: 4 Ways Annette D72E

S: Bauhinia Park Dozer
Dam: Bauhinia Park Laura 10
D: Bauhinia Park Laura 2



Comments: A real standout since birth. We have offered some beautiful Mario sons over the past few years and think that this bloke is up there with the best of them! Displays a wonderful amount of bone, natural thickness and muscle expression with added softness and good loose skin type. He gets around with a strong sire's presence and is backed by a wonderful mix of pedigree combining Mario, Dozer & Pinay, all in a polled red factor package. His dam is breeding very well for us with 6 calves in 6 breeding years and another one on the way. Stud sire prospect.



Pictured: 4 Ways Mario (P) (R/F).

June 2025 Australasian Charolais Breedplan

	Birth Wt.	200 Day	400 Day	600 Day	Mat. Cow	Milk (kg)	Carcase	EMA	Rib Fat	Rump Fat	Beef Yield	IMF
EBV	+1.6	+16	+30	+39	+44	+6	+26	+2.9	-0.6	-1.0	+1.3	+0.3
Acc	55%	64%	59%	61%	54%	51%	50%	36%	43%	42%	37%	35%

Purchaser: Price: \$.....

Lot 6**Bauhinia Park Underproof (AI) (P/S)**

ID: BAU23U24E **Birth Date:** 2/08/2023
Colour: White **DNA:** BPAC

S: Venturon Keystone (P)
Sire: Venturon Maximum Impact (P)
D: Venturon Hillary (P)

S: ANC Lastovski
Dam: Bauhinia Park Natalie 18
D: Bauhinia Park Natalie 7



Comments: Very eye appealing young bull who is long as a train with a lovely defined hindquarter. Displays some extra weight for age, volume and softness whilst staying nice and athletic on good feet and legs. He is an AI calf by 'Max', a strong outcross sire we chose to trial in our breeding program. Dam is a beautiful big Lastovski daughter who always produces one of the heaviest weaners.



*Pictured right: ANC Lastovski -
Grandsire of Lots 4, 6, 25, 29, 31 and 42.*

June 2025 Australasian Charolais Breedplan

	Birth Wt.	200 Day	400 Day	600 Day	Mat. Cow	Milk (kg)	Carcase	EMA	Rib Fat	Rump Fat	Beef Yield	IMF
EBV	+1.3	+14	+31	+45	+54	+15	+31	+4.0	+0.6	+0.7	+1.1	-0.1
Acc	62%	61%	56%	59%	52%	47%	47%	36%	43%	42%	37%	35%

Purchaser: Price: \$.....

Lot 7**Bauhinia Park Ultimo**

ID: BAU23U113E **Birth Date:** 14/08/2023
Colour: White **DNA:** BPAF

S: Paringa Harvey H338 (P)
Sire: Bauhinia Park Revolver (P)
D: River Run Nestle (P)

S: Minnie-Vale Jacky (P)
Dam: Bauhinia Park Gem 8 (P)
D: Bauhinia Park Gem 3



Comments: This is a wonderful horned bull that displays so much natural constitution and substance. Dam is one of our favourite Jacky daughters who is super fertile with a beautiful udder and will enter the IVF program later in the year. The extra carcase, weight for age and doing ability in these Revolver sons has become very evident. No matter what your breeding program is targeted towards, this is a really good honest bull that will produce quality calves one after another.

**June 2025 Australasian Charolais Breedplan**

	Birth Wt.	200 Day	400 Day	600 Day	Mat. Cow	Milk (kg)	Carcase	EMA	Rib Fat	Rump Fat	Beef Yield	IMF
EBV	+1.0	+13	+23	+37	+49	+1	+24	+2.1	-0.2	-0.4	+0.8	-0.3
Acc	59%	63%	58%	61%	53%	48%	48%	36%	46%	45%	38%	36%

Purchaser: Price: \$.....

Lot 8**Bauhinia Park Urippa (P) (R/F)**

ID: BAU23U99E **Birth Date:** 20/08/2023
Colour: Red factor **DNA:** BPAF

S: Kenmere Nuptune (P)
Sire: Bauhinia Park Red Line
D: Bauhinia Park Natalie 13 (P)

S: Palgrove Emblem
Dam: Mullum Covergirl 3 (P)
D: Palgrove Covergirl 62 (P)



Comments: Lovely slick coated red factor bull with plenty of style and weight for age. His sire Red Line was a stand out in his year and retained for stud duties. On the dams side he stems back to some very proven old Palgrove bloodlines. Long bodied with a defined hindquarter and strong topline, this is a beautiful free moving bull that will handle himself well out amongst the cows.



*Pictured right: Bauhinia Park Red Line (R/F) -
Sire of Lots 8, 28, 34 and 42.*

June 2025 Australasian Charolais Breedplan

	Birth Wt.	200 Day	400 Day	600 Day	Mat. Cow	Milk (kg)	Carcase	EMA	Rib Fat	Rump Fat	Beef Yield	IMF
EBV	-0.5	+11	+21	+28	+29	+11	+19	+1.7	-0.3	-0.6	+0.6	+0.1
Acc	55%	58%	52%	52%	48%	45%	41%	33%	40%	39%	35%	33%

Purchaser: Price: \$.....

Lot 9**Bauhinia Park U-Bet (P)**

ID: BAU23U122E **Birth Date:** 18/08/2023
Colour: White **DNA:** BPAF

S: ANC Mac (P)
Sire: ANC Q Pac (P)
D: ANC Wilmuri

S: JC Lannister L1 (P)
Dam: Charnelle Katrina 6 (P)
D: Charnelle Katrina 5 (P)



Comments: The first of a really strong draft of Q Pac sons for this year's sale. We love what Q Pac has done for the stud, his progeny are strong headed and deep bodied with plenty of bone, natural muscle expression and the right amount of softness. This bull is no exception, great weight for age with volume and a good slick coat. We have a full sister to this bull that is simply stunning. Weaners, bullocks or keeping replacement females, this bull is a great option.

June 2025 Australasian Charolais Breedplan

	Birth Wt.	200 Day	400 Day	600 Day	Mat. Cow	Milk (kg)	Carcase	EMA	Rib Fat	Rump Fat	Beef Yield	IMF
EBV	+1.2	+18	+27	+34	+54	-2	+20	+1.4	0.0	+0.1	+0.2	-0.1
Acc	63%	62%	57%	59%	51%	48%	47%	39%	48%	47%	41%	38%

Purchaser: Price: \$.....

Lot 10**Bauhinia Park Utopia U87E (PP)**

ID: BAU23U87E **Birth Date:** 1/08/2023
Colour: White **DNA:** BPAF

S: Paringa Harvey H338 (P)
Sire: Bauhinia Park Revolver (P)
D: River Run Nestle (P)

S: 4 Ways Mario (P)
Dam: Bauhinia Park Anastasia 19 (P)
D: Bauhinia Park Anastasia 12



Comments: A top quality homozygous polled, BPA free Revolver son that has a lovely kind nature and awesome supple skin type. Very smooth fronted with a handsome sire's head and hooded eye. Stems from our Anastasia cow family who go back to our all time favourite cow in X19E. Strong topline, plenty of depth, thickness & softness backed by awesome breedplan numbers. This is a bull that ticks lots of boxes, a great stud heifer bull option.

**June 2025 Australasian Charolais Breedplan**

	Birth Wt.	200 Day	400 Day	600 Day	Mat. Cow	Milk (kg)	Carcase	EMA	Rib Fat	Rump Fat	Beef Yield	IMF
EBV	+0.6	+17	+37	+51	+50	+11	+29	+1.9	+1.1	+1.4	-0.8	+1.0
Acc	55%	59%	54%	56%	49%	43%	45%	37%	46%	44%	39%	37%

Purchaser: Price: \$.....

Lot 11**Bauhinia Park U Beaut (P)**

ID: BAU23U41E **Birth Date:** 10/09/2023
Colour: White **DNA:** BPAF

S: GDA Parfait (P)
Sire: Moongool Mr R251 (P)
D: Moongool J318C

S: Minnie-Vale Magistrate (P)
Dam: Bauhinia Park Honor 10 (P)
D: Bauhinia Park Honor 8



Comments: An upstanding young polled bull we have a lot of time for. The first son to sell from 40k purchase, Moongool MR R251. Displays a heap of bone, softness and cover with a lovely deep flank and easy fleshing ability. This bull's dam is one of my favourite cows, the type you wish you had hundreds of! Has a lovely nature and is a pleasure to have in the paddock.

**June 2025 Australasian Charolais Breedplan**

	Birth Wt.	200 Day	400 Day	600 Day	Mat. Cow	Milk (kg)	Carcase	EMA	Rib Fat	Rump Fat	Beef Yield	IMF
EBV	+2.1	+19	+32	+44	+58	+2	+26	+1.9	-0.3	-0.8	+0.8	-0.2
Acc	52%	58%	51%	53%	47%	40%	41%	31%	38%	37%	32%	30%

Purchaser: Price: \$.....

Lot 12**Bauhinia Park Underline (P)**

ID: BAU23U60E **Birth Date:** 5/09/2023
Colour: White **DNA:** BPAF

S: GDA Parfait (P)
Sire: Moongool Mr R251 (P)
D: Moongool J318C

S: Bauhinia Park Dozer
Dam: Bauhinia Park Natalie 11
D: Bauhinia Park Natalie 2



Comments: This is a really strong bodied R251 son with so much strength through the barrel and natural muscle expression. Very thick on top with a well defined eye muscle that flows on down to his rump. His dam is a Dozer/W31 female who has had 7 calves in 7 breeding years - the type of proven pedigree we built our herd around. A robust bull that will cross beautifully over any Bos Indicus based cow herds.



Pictured right: Bauhinia Park Dozer - Grandsire of Lots 5, 12, 19, 30 and 36.

June 2025 Australasian Charolais Breedplan

	Birth Wt.	200 Day	400 Day	600 Day	Mat. Cow	Milk (kg)	Carcase	EMA	Rib Fat	Rump Fat	Beef Yield	IMF
EBV	+1.8	+14	+24	+32	+39	+2	+20	+1.7	-1.0	-1.8	+1.3	-0.4
Acc	52%	60%	54%	56%	54%	46%	45%	30%	36%	35%	31%	29%

Purchaser: Price: \$.....

Lot 13**Bauhinia Park Universal (PP)**

ID: BAU23U105E **Birth Date:** 22/08/2023
Colour: White **DNA:** BPAC

S: ANC Mac (P)
Sire: ANC Q Pac (P)
D: ANC Wilmuri

S: CML Distinction 318A (P)
Dam: Bauhinia Park Gem 7 (P)
D: Bauhinia Park D52E (P)



Comments: A homozygous polled Q Pac son that has been one of our favourites the whole way through. A good thick set bull with a lovely head, plenty of bone, natural shape and constitution. He is a good sized bull with a nice even maturity pattern. Dam has a lovely udder with plenty of milk and has produced 5 calves in 5 breeding years. One of the better polled bulls in the sale, comes highly recommended.

June 2025 Australasian Charolais Breedplan

	Birth Wt.	200 Day	400 Day	600 Day	Mat. Cow	Milk (kg)	Carcase	EMA	Rib Fat	Rump Fat	Beef Yield	IMF
EBV	+0.2	+14	+22	+31	+44	+1	+22	+2.0	+0.1	-0.2	+0.7	-0.5
Acc	62%	63%	58%	59%	54%	49%	47%	38%	47%	46%	39%	37%

Purchaser: Price: \$.....

Lot 14**Bauhinia Park Upper Class (P)**

ID: BAU23U126E **Birth Date:** 12/08/2023
Colour: White **DNA:** BPAC

S: ANC Mac (P)
Sire: ANC Q Pac (P)
D: ANC Wilmuri

S: Sparrows Seminole 927W (P)
Dam: Bauhinia Park Fair Lady 5
D: Bauhinia Park Fair Lady 2 (P)



Comments: Another quality Q Pac son that was a beautiful calf. Length, bone, depth, easy fleshing ability and good scrotal size. His dam is breeding very well for us having weaned one of the best heifer's this year. If you're trying to breed those ripping creamy crossbred weaners that are always so popular, these Q Pac sons will do it in spades!

June 2025 Australasian Charolais Breedplan

	Birth Wt.	200 Day	400 Day	600 Day	Mat. Cow	Milk (kg)	Carcase	EMA	Rib Fat	Rump Fat	Beef Yield	IMF
EBV	+0.4	+10	+15	+23	+36	-3	+16	+1.2	+0.4	+0.3	+0.1	-0.5
Acc	60%	63%	58%	60%	53%	48%	48%	36%	46%	45%	38%	35%

Purchaser: Price: \$.....

Lot 15**Bauhinia Park Useful (P)**

ID: BAU23U92E **Birth Date:** 18/07/2023
Colour: White **DNA:** BPAC

S: Paringa Harvey H338 (P)
Sire: Bauhinia Park Revolver (P)
D: River Run Nestle (P)

S: 4 Ways Mario (P)
Dam: Bauhinia Park Natalie 23 (P)
D: Bauhinia Park Natalie 3



Comments: This is a really easy doing Revolver son that was born easily out of a maiden heifer. Displays a heap of natural shape with added softness and finishing ability. A good uncomplicated style of bull that should handle himself easily out with the cows. The Revolver/Mario cross has proven to work very well for us.

June 2025 Australasian Charolais Breedplan

	Birth Wt.	200 Day	400 Day	600 Day	Mat. Cow	Milk (kg)	Carcase	EMA	Rib Fat	Rump Fat	Beef Yield	IMF
EBV	+0.5	+12	+30	+39	+32	+10	+23	+1.6	+0.6	+0.7	-0.4	+0.9
Acc	55%	59%	54%	56%	50%	44%	45%	37%	45%	44%	38%	36%

Purchaser: Price: \$.....

Lot 16**Bauhinia Park Underway (R/F)**

ID: BAU23U44E **Birth Date:** 12/08/2023
Colour: Red factor **DNA:** N/T

S: Moongool Jag (P)
Sire: 4 Ways Mario (P)
D: 4 Ways Annette D72E

S: Fernvale Black Adder
Dam: Bauhinia Park Quoto
D: Moongool Quoto 7



Comments: Take a look at the extra length, bone and big square hindquarter on this Mario son. His dam has been a wonderful cow for us with 10 calves in 10 breeding years. She is sired by Black Adder who was out of the great Fernvale Primadonna. Another bull that will cross beautifully over Brahman based cow herds and leave some awesome fertile replacement females.

June 2025 Australasian Charolais Breedplan

	Birth Wt.	200 Day	400 Day	600 Day	Mat. Cow	Milk (kg)	Carcase	EMA	Rib Fat	Rump Fat	Beef Yield	IMF
EBV	+1.0	+7	+18	+19	+19	+5	+16	+2.7	-0.2	-0.4	+0.9	+0.1
Acc	54%	65%	59%	61%	56%	53%	49%	36%	42%	41%	37%	35%

Purchaser: Price: \$.....

Lot 17**Bauhinia Park Uno (R/F)**

ID: BAU23U34E **Birth Date:** 12/08/2023
Colour: Red factor **DNA:** N/T

S: Paringa Harvey H338 (P)
Sire: Bauhinia Park Revolver (P)
D: River Run Nestle (P)

S: 4 Ways Mario (P)
Dam: Bauhinia Park Pansy 19 (P)
D: Bauhinia Park Pansy 9 (P)

Comments: Top quality red factor sire with plenty of bone and strong sire's head. He is level topped and thick butted with a good temperament.

**June 2025 Australasian Charolais Breedplan**

	Birth Wt.	200 Day	400 Day	600 Day	Mat. Cow	Milk (kg)	Carcase	EMA	Rib Fat	Rump Fat	Beef Yield	IMF
EBV	+0.7	+15	+34	+46	+39	+11	+27	+1.6	+0.5	+0.6	-0.5	+1.0
Acc	54%	59%	54%	55%	49%	43%	44%	37%	45%	44%	38%	36%

Purchaser: Price: \$.....

Lot 18**Bauhinia Park U-Turn (P) (R/F)**

ID: BAU23U39E **Birth Date:** 1/09/2023
Colour: Red factor **DNA:** BPAF

S: GDA Parfait (P)
Sire: Moongool Mr R251 (P)
D: Moongool J318C

S: Bauhinia Park G144 (P)
Dam: Bauhinia Park Gem 2 (P)
D: Bauhinia Park Gem (P)

Comments: Strong boned, free moving red factor polled bull that will handle the big country with ease. Nice combination of breeding here. White spot on his forehead.

**June 2025 Australasian Charolais Breedplan**

	Birth Wt.	200 Day	400 Day	600 Day	Mat. Cow	Milk (kg)	Carcase	EMA	Rib Fat	Rump Fat	Beef Yield	IMF
EBV	+1.5	+9	+19	+23	+30	+3	+17	+2.0	-1.0	-1.7	+1.2	-0.3
Acc	51%	60%	54%	55%	53%	45%	44%	29%	36%	35%	31%	28%

Purchaser: Price: \$.....

Lot 19**Bauhinia Park Usher**

ID: BAU23U103E **Birth Date:** 22/08/2023
Colour: White **DNA:** N/T

S: ANC Mac (P)
Sire: ANC Q Pac (P)
D: ANC Wilmuri

S: Bauhinia Park Dozer
Dam: Bauhinia Park Sandra 14
D: Bauhinia Park

Comments: A beautiful big, strong boned Q Pac son with a silky smooth skin type. Plenty of style and fleshing ability. A bull we have a lot of time for.

**June 2025 Australasian Charolais Breedplan**

	Birth Wt.	200 Day	400 Day	600 Day	Mat. Cow	Milk (kg)	Carcase	EMA	Rib Fat	Rump Fat	Beef Yield	IMF
EBV	+0.6	+13	+19	+28	+41	-1	+18	+1.7	0.0	-0.2	+0.6	-0.4
Acc	58%	64%	58%	59%	56%	50%	48%	35%	44%	43%	37%	34%

Purchaser: Price: \$.....

Lot 20**Bauhinia Park Up Town**

ID: BAU23U121E **Birth Date:** 22/08/2023
Colour: White **DNA:** N/T

S: ANC Mac (P)
Sire: ANC Q Pac (P)
D: ANC Wilmuri

S: Minnie-Vale Jacky (P)
Dam: Bauhinia Park Kassidy 2 (P)
D: Bauhinia Park Kassidy (P)

Comments: Another quality slick coated Q Pac son out of a lovely Jacky female. Easy fleshing and free moving with a good square hindquarter.

H2h

June 2025 Australasian Charolais Breedplan

	Birth Wt.	200 Day	400 Day	600 Day	Mat. Cow	Milk (kg)	Carcase	EMA	Rib Fat	Rump Fat	Beef Yield	IMF
EBV	0.0	+9	+17	+25	+31	+1	+18	+1.3	-0.1	-0.4	+0.4	-0.3
Acc	57%	62%	57%	59%	52%	47%	47%	35%	45%	44%	37%	35%

Purchaser: Price: \$.....

Lot 21**Bauhinia Park Uphill (R/F)**

ID: BAU23U101E **Birth Date:** 22/08/2023
Colour: Red factor **DNA:** N/T

S: ANC Mac (P)
Sire: ANC Q Pac (P)
D: ANC Wilmuri

S: Minnie-Vale Jacky (P)
Dam: Bauhinia Park Fancy 2 (P)
D: Mullum Fancy 2

Comments: Awesome depth and easy fleshing ability here. Always eye catching in the paddock for his wonderful shape and fullness of body. Moves like a cat.

**June 2025 Australasian Charolais Breedplan**

	Birth Wt.	200 Day	400 Day	600 Day	Mat. Cow	Milk (kg)	Carcase	EMA	Rib Fat	Rump Fat	Beef Yield	IMF
EBV	+0.4	+13	+21	+30	+39	-2	+20	+2.0	+0.7	+0.7	+0.2	-0.3
Acc	59%	63%	57%	60%	52%	47%	48%	36%	46%	45%	38%	36%

Purchaser: Price: \$.....

Lot 22**Bauhinia Park Unity**

ID: BAU23U30E **Birth Date:** 20/08/2023
Colour: White **DNA:** N/T

S: ANC Mac (P)
Sire: ANC Q Pac (P)
D: ANC Wilmuri

S: Palgrove Leader L204E (P/S)
Dam: Milford Glene P45E (P)
D: Milford Glene

Comments: Strong boned Q Pac son with a super quiet nature. Shows plenty of eye muscle, thick hindquarter and good scrotal size.

H2h

June 2025 Australasian Charolais Breedplan

	Birth Wt.	200 Day	400 Day	600 Day	Mat. Cow	Milk (kg)	Carcase	EMA	Rib Fat	Rump Fat	Beef Yield	IMF
EBV	+0.4	+10	+19	+26	+43	+1	+21	+2.3	0.0	-0.2	+0.7	-0.5
Acc	60%	60%	54%	55%	48%	45%	43%	36%	45%	44%	38%	35%

Purchaser: Price: \$.....

Lot 23**Bauhinia Park Upturn (R/F)**

ID: BAU23U25E **Birth Date:** 10/08/2023
Colour: Red factor **DNA:** N/T

S: GDA Parfait (P)
Sire: Moongool Mr R251 (P)
D: Moongool J318C

S: Bauhinia Park G144 (P)
Dam: Bauhinia Park Queue 12 (P)
D: Bauhinia Park Queue 9

Comments: This is a big upstanding R251 son with a heap of bone and scale. Dam is one of our best cows. Wonderful bull for the bullock producer.

H2A**June 2025 Australasian Charolais Breedplan**

	Birth Wt.	200 Day	400 Day	600 Day	Mat. Cow	Milk (kg)	Carcase	EMA	Rib Fat	Rump Fat	Beef Yield	IMF
EBV	+2.9	+21	+34	+48	+69	+1	+27	+1.9	-1.0	-1.7	+1.3	-0.3
Acc	52%	60%	54%	55%	53%	44%	44%	31%	38%	37%	32%	30%

Purchaser: Price: \$.....

Lot 24**Bauhinia Park Unreal (P) (R/F)**

ID: BAU23U50E **Birth Date:** 20/09/2023
Colour: Red factor **DNA:** BPAF

S: GDA Parfait (P)
Sire: Moongool Mr R251 (P)
D: Moongool J318C

S: Ayr M.H'S Exeter
Dam: Bauhinia Park Sandra 15
D: Bauhinia Park Sandra 2

Comments: Another big strong R251 son this time in a polled, red factor package. Maternal brother topped our sale in 2023. Bone, scale and full of red meat!

**June 2025 Australasian Charolais Breedplan**

	Birth Wt.	200 Day	400 Day	600 Day	Mat. Cow	Milk (kg)	Carcase	EMA	Rib Fat	Rump Fat	Beef Yield	IMF
EBV	+2.9	+16	+30	+42	+55	0	+26	+2.0	-1.5	-2.5	+1.7	-0.5
Acc	52%	59%	53%	55%	52%	44%	44%	30%	37%	36%	32%	30%

Purchaser: Price: \$.....

Lot 25**Bauhinia Park Upshot (P)**

ID: BAU23U127E **Birth Date:** 10/08/2023
Colour: White **DNA:** BPAC

S: ANC Mac (P)
Sire: ANC Q Pac (P)
D: ANC Wilmuri

S: ANC Lastovski
Dam: Bauhinia Park Crystal 10
D: Bauhinia Park Crystal 5

Comments: A really nicely bred Q Pac son out of a great Lastovski/Dozer cow. Plenty of growth and thickness. A quality young sire we haven't seen the best of yet!

Bid Card Pre-Registration Available!

1. Scan the QR code.
2. Enter your details.
3. On Sale Day, your Bid Card will be ready for you to collect from the Administration desk.

**June 2025 Australasian Charolais Breedplan**

	Birth Wt.	200 Day	400 Day	600 Day	Mat. Cow	Milk (kg)	Carcase	EMA	Rib Fat	Rump Fat	Beef Yield	IMF
EBV	+1.5	+19	+32	+47	+67	+1	+31	+2.7	-0.3	-0.6	+1.2	-0.5
Acc	59%	63%	58%	61%	53%	48%	49%	36%	46%	45%	38%	36%

Purchaser: Price: \$.....

Lot 26**Sanlara Park Urban (AI) (P)**

ID: SLP23U3E **Birth Date:** 16/08/2023
Colour: White **DNA:** BPAF

S: Silverstream Jensen J19 (P)
Sire: Silverstream National N40 (P)
D: Silverstream Opie G8 (P)

S: Bettafield D71E (P)
Dam: Sanlara Park Nadia
D: 4 Ways Katrina K5E (P)

Comments: An attractive young polled sire purchased along side his dam as the top price unit from the Charnelle female sale last year. His sire National is breeding very well.

**June 2025 Australasian Charolais Breedplan**

	Birth Wt.	200 Day	400 Day	600 Day	Mat. Cow	Milk (kg)	Carcase	EMA	Rib Fat	Rump Fat	Beef Yield	IMF
EBV	+1.7	+15	+29	+43	+43	+27	+2.0	+2.0	-1.0	-1.5	+1.4	-0.2
Acc	65%	63%	61%	61%	54%	54%	51%	43%	50%	49%	44%	43%

Purchaser: Price: \$.....

Lot 27**Bauhinia Park Ulysses (P)**

ID: BAU23U137E **Birth Date:** 28/08/2023
Colour: White **DNA:** N/T

S: ANC Mac (P)
Sire: ANC Q Pac (P)
D: ANC Wilmuri

S: Minnie-Vale Jacky (P)
Dam: Bauhinia Park Caarol 2 (P)
D: Glenlea Caarol 36th R/F

Comments: Moderate framed, thick set young bull with a heap of natural punch and constitution. Will produce some awesome crossbred calves.

H2h

June 2025 Australasian Charolais Breedplan

	Birth Wt.	200 Day	400 Day	600 Day	Mat. Cow	Milk (kg)	Carcase	EMA	Rib Fat	Rump Fat	Beef Yield	IMF
EBV	+0.3	+11	+16	+21	+34	-3	+14	+1.5	+0.4	+0.4	+0.2	-0.3
Acc	60%	63%	58%	61%	53%	48%	49%	36%	46%	45%	39%	36%

Purchaser: Price: \$.....

Lot 28**Bauhinia Park Ulster (P) (R/F)**

ID: BAU23U181E **Birth Date:** 12/09/2023
Colour: Red factor **DNA:** N/T

S: Kenmere Nuptune (P)
Sire: Bauhinia Park Red Line
D: Bauhinia Park Natalie 13 (P)

S: Kenmere Nuptune (P)
Dam: Bauhinia Park Foxy Lady 4 (P)
D: Fernvale Foxy Lady (P)

Comments: Super eye catching young bull that has a lot going for him. Ample length, depth, thickness and softness on good feet and legs. Out of a great cow family.

**June 2025 Australasian Charolais Breedplan**

	Birth Wt.	200 Day	400 Day	600 Day	Mat. Cow	Milk (kg)	Carcase	EMA	Rib Fat	Rump Fat	Beef Yield	IMF
EBV	-1.7	+12	+21	+27	+25	+13	+23	+2.9	-0.1	-0.4	+1.0	-0.4
Acc	56%	61%	55%	55%	50%	45%	45%	37%	45%	44%	39%	36%

Purchaser: Price: \$.....

Lot 29**Bauhinia Park Uptake**

ID: BAU23U31E **Birth Date:** 22/08/2023
Colour: White **DNA:** N/T

S: Moongool Jag (P)
Sire: 4 Ways Mario (P)
D: 4 Ways Annette D72E

S: ANC Lastovski
Dam: Bauhinia Park Anastasia 14
D: Bauhinia Park Anastasia 12

Comments: Robust Mario son with plenty of natural bone and grunt. Strong headed bull that will handle a power of work.

**June 2025 Australasian Charolais Breedplan**

	Birth Wt.	200 Day	400 Day	600 Day	Mat. Cow	Milk (kg)	Carcase	EMA	Rib Fat	Rump Fat	Beef Yield	IMF
EBV	+1.3	+14	+29	+40	+50	+7	+27	+3.4	+0.1	-0.1	+1.0	+0.2
Acc	55%	64%	58%	61%	53%	48%	48%	35%	42%	41%	36%	34%

Purchaser: Price: \$.....

Lot 30**Bauhinia Park Undercliff (R/F)**

ID: BAU23U191E **Birth Date:** 20/11/2023
Colour: Red factor **DNA:** BPAF

S: GDA Parfait (P)
Sire: Moongool Mr R251 (P)
D: Moongool J318C

S: Bauhinia Park Dozer
Dam: Bauhinia Park Que 18
D: Bauhinia Park Que Iv (P/S)

Comments: Beautiful red factor bull with plenty of growth, depth and fleshing ability. I see a lot of Dozer in this bull. Note his age. One of our favourite bulls in the catalogue.

**June 2025 Australasian Charolais Breedplan**

	Birth Wt.	200 Day	400 Day	600 Day	Mat. Cow	Milk (kg)	Carcase	EMA	Rib Fat	Rump Fat	Beef Yield	IMF
EBV	+2.5	+21	+33	+46	+62	+2	+26	+1.5	-0.7	-1.4	+0.9	-0.3
Acc	53%	59%	54%	56%	51%	44%	46%	32%	39%	38%	33%	31%

Purchaser: Price: \$.....

Lot 31**Bauhinia Park Ultrasound**

ID: BAU23U85E **Birth Date:** 20/09/2023
Colour: White **DNA:** N/T

S: Paringa Harvey H338 (P)
Sire: Bauhinia Park Revolver (P)
D: River Run Nestle

S: ANC Lastovski
Dam: Bauhinia Park Clara 3
D: Palgrove Clara M94E (P)

Comments: Very functional, easy doing Revolver son that is smooth made and free moving. Great mix of pedigree. This bull will grow on.

**June 2025 Australasian Charolais Breedplan**

	Birth Wt.	200 Day	400 Day	600 Day	Mat. Cow	Milk (kg)	Carcase	EMA	Rib Fat	Rump Fat	Beef Yield	IMF
EBV	+1.4	+22	+42	+63	+67	+12	+35	+2.0	0.0	-0.2	0.0	+0.9
Acc	57%	60%	55%	56%	50%	45%	46%	39%	47%	46%	40%	38%

Purchaser: Price: \$.....

Lot 32

Bauhinia Park Uncle Toby

ID: BAU23U146B **Birth Date:** 2/10/2023
Colour: White **DNA:** N/T

S: ANC Mac (P)
Sire: ANC Q Pac (P)
D: ANC Wilmuri

S: Bauhinia Park Jag J77E
Dam: Bauhinia Park N253
D: Rascal Flatts J17

Comments: Well structured Q Pac calf that will mature into an impressive sire. Dam is a good producing cow sired by Jag who was a leading Dozer son.



June 2025 Australasian Charolais Breedplan

	Birth Wt.	200 Day	400 Day	600 Day	Mat. Cow	Milk (kg)	Carcase	EMA	Rib Fat	Rump Fat	Beef Yield	IMF
EBV	-	-	-	-	-	-	-	-	-	-	-	-
Acc	-	-	-	-	-	-	-	-	-	-	-	-

Purchaser: Price: \$.....

Lot 33

Bauhinia Park Unfussable (P)

ID: BAU23U123E **Birth Date:** 24/08/2023
Colour: White **DNA:** N/T

S: ANC Mac (P)
Sire: ANC Q Pac (P)
D: ANC Wilmuri

S: CML Distinction 318A (P)
Dam: Bauhinia Park Nessa 3 (P)
D: Bauhinia Park Nessa

Comments: Easy doing polled bull with a heap of length, muscle and ability to finish easily. Out of a very fertile cow with a good calving interval.

H2h

June 2025 Australasian Charolais Breedplan

	Birth Wt.	200 Day	400 Day	600 Day	Mat. Cow	Milk (kg)	Carcase	EMA	Rib Fat	Rump Fat	Beef Yield	IMF
EBV	+0.3	+17	+24	+34	+45	-3	+22	+1.5	+0.3	+0.1	+0.4	-0.5
Acc	60%	62%	57%	58%	51%	46%	46%	37%	46%	45%	39%	36%

Purchaser: Price: \$.....

Lot 34

Bauhinia Park Unmatched (P)

ID: BAU23U106E **Birth Date:** 12/08/2023
Colour: White **DNA:** BPAF

S: Kenmere Nuptune (P)
Sire: Bauhinia Park Red Line
D: Bauhinia Park Natalie 13 (P)

S: 4 Ways Mario (P)
Dam: Bauhinia Park Omen 18 (P)
D: Bauhinia Park Omen 14

Comments: Here's a super free moving, robust Red Line son out of a good Mario daughter. Length, strength and carcass in spades.

Videos of 2025 Sale Bulls will
be available via our Website
closer to the Sale!

Follow us on Facebook
for updates.

June 2025 Australasian Charolais Breedplan

	Birth Wt.	200 Day	400 Day	600 Day	Mat. Cow	Milk (kg)	Carcase	EMA	Rib Fat	Rump Fat	Beef Yield	IMF
EBV	-0.7	+11	+23	+31	+26	+11	+25	+2.8	-0.5	-1.1	+1.2	-0.1
Acc	53%	59%	53%	54%	48%	42%	43%	34%	42%	41%	36%	33%

Purchaser: Price: \$.....

Lot 35

Bauhinia Park Utility (AI) (PP)

ID: BAU23U57E **Birth Date:** 5/08/2023
Colour: White **DNA:** BPAF

S: Rosedale Nagel (P)
Sire: Ascot Recharge R125E (P)
D: Ascot M28E (P)

S: Moongool Pilgrim (P)
Dam: Bauhinia Park Queue 20 (P)
D: Bauhinia Park Queue 15 (P)

Comments: Homozygous polled AI calf by Ascot Recharge. Long bodied & slick coated. The Recharge sons were popular in last years sale.

*Thank you to
 Matt & Shannon Sowden,
 5 Star Creative Promotions.*

June 2025 Australasian Charolais Breedplan

	Birth Wt.	200 Day	400 Day	600 Day	Mat. Cow	Milk (kg)	Carcase	EMA	Rib Fat	Rump Fat	Beef Yield	IMF
EBV	+1.4	+21	+36	+54	+57	+4	+30	+2.2	+0.2	+0.1	+0.6	-0.1
Acc	65%	62%	59%	60%	54%	45%	47%	40%	50%	48%	41%	40%

Purchaser: Price: \$.....

Lot 36

Bauhinia Park Ultimate (P) (R/F)

ID: BAU23U20E **Birth Date:** 5/08/2023
Colour: Red factor **DNA:** BPAF

S: Moongool Jag (P)
Sire: 4 Ways Mario (P)
D: 4 Ways Annette D72E

S: Bauhinia Park Dozer
Dam: Bauhinia Park Crystal 4
D: Bauhinia Park Crystal

Comments: Moderate framed polled and gold Mario son that was an awesome calf. If your operation targets selling weaners have a look here!



June 2025 Australasian Charolais Breedplan

	Birth Wt.	200 Day	400 Day	600 Day	Mat. Cow	Milk (kg)	Carcase	EMA	Rib Fat	Rump Fat	Beef Yield	IMF
EBV	+1.0	+12	+27	+31	+29	+6	+23	+2.8	-0.1	-0.4	+1.0	+0.2
Acc	55%	65%	59%	61%	57%	52%	49%	35%	42%	41%	37%	34%

Purchaser: Price: \$.....

Lot 37

Bauhinia Park Undercut (R/F)

ID: BAU23U55E **Birth Date:** 16/09/2023
Colour: Red factor **DNA:** N/T

S: Moongool Jag (P)
Sire: 4 Ways Mario (P)
D: 4 Ways Annette D72E

S: Lt Cheyenne Blend 7142 (P)
Dam: Bauhinia Park Elise 2
D: Bauhinia Park W25E

Comments: Another moderate, thick set, red factor Mario son with plenty of length and squareness. Dam always calves early raising a solid weaner.

H2h

June 2025 Australasian Charolais Breedplan

	Birth Wt.	200 Day	400 Day	600 Day	Mat. Cow	Milk (kg)	Carcase	EMA	Rib Fat	Rump Fat	Beef Yield	IMF
EBV	+0.3	+11	+22	+24	+30	+6	+17	+2.1	+1.0	+1.4	-0.4	+0.5
Acc	57%	64%	59%	62%	56%	51%	50%	38%	45%	44%	39%	37%

Purchaser: Price: \$.....

Lot 38**Bauhinia Park Uranium (PP)**

ID: BAU23U148E **Birth Date:** 18/10/2023
Colour: White **DNA:** BPAC

S: ANC Mac (P)
Sire: ANC Q Pac (P)
D: ANC Wilmuri

S: Glenlea Magic (P)
Dam: Bauhinia Park Gem 10 (P)
D: Bauhinia Park Gem 4

Comments: Homozygous polled bull this time by Q Pac out of a Glenlea Magic female with a perfect udder. Length and softness, quality younger bull here.

H2h

June 2025 Australasian Charolais Breedplan

	Birth Wt.	200 Day	400 Day	600 Day	Mat. Cow	Milk (kg)	Carcase	EMA	Rib Fat	Rump Fat	Beef Yield	IMF
EBV	+0.4	+17	+27	+36	+55	-1	+22	+2.0	+0.5	+0.7	0.0	0.0
Acc	60%	62%	56%	58%	51%	47%	45%	37%	47%	45%	39%	36%

Purchaser: Price: \$.....

Lot 39**Bauhinia Park Undercoat (P)**

ID: BAU23U147E **Birth Date:** 2/10/2023
Colour: White **DNA:** BPAF

S: ANC Mac (P)
Sire: ANC Q Pac (P)
D: ANC Wilmuri

S: Sparrows Seminole 927W (P)
Dam: Bauhinia Park Prim 14 (P)
D: Bauhinia Park Prim 9

Comments: Another younger polled Q Pac son with a heap of bone and spring of rib.

H2h

June 2025 Australasian Charolais Breedplan

	Birth Wt.	200 Day	400 Day	600 Day	Mat. Cow	Milk (kg)	Carcase	EMA	Rib Fat	Rump Fat	Beef Yield	IMF
EBV	+0.5	+12	+19	+27	+42	-2	+19	+1.2	+0.2	0.0	+0.3	-0.5
Acc	59%	62%	56%	58%	51%	46%	46%	35%	45%	44%	38%	35%

Purchaser: Price: \$.....

Lot 40**Bauhinia Park Uranus (P)**

ID: BAU23U179E **Birth Date:** 22/10/2023
Colour: White **DNA:** N/T

S: Minnie-Vale Magistrate (P)
Sire: Bauhinia Park Quantas (P)
D: Bauhinia Park Laura 8

S: Fernvale George (P/S)
Dam: Fernvale Countess Q5E
D: Fernvale Countess

Comments: Easy doing son of retained sire Quantas. Slick coated, deep bodied and plenty of fleshing. Nice temperament on this young polled bull.

**June 2025 Australasian Charolais Breedplan**

	Birth Wt.	200 Day	400 Day	600 Day	Mat. Cow	Milk (kg)	Carcase	EMA	Rib Fat	Rump Fat	Beef Yield	IMF
EBV	+1.3	+15	+27	+39	+50	+6	+24	+2.3	0.0	-0.2	+0.8	-0.1
Acc	51%	56%	49%	50%	46%	41%	39%	28%	34%	32%	28%	27%

Purchaser: Price: \$.....

Lot 41**Bauhinia Park Unite**

ID: BAU23U164E **Birth Date:** 2/10/2023
Colour: White **DNA:** N/T

S: Minnie-Vale Magistrate (P)
Sire: Bauhinia Park Quantas (P)
D: Bauhinia Park Laura 8

S: Fernvale George (P/S)
Dam: Fernvale Black Velvet P15E
D: Fernvale Black Velvet

Comments: Take a look at the muscle pattern and structure in this calf. Don't let this young bull slip under your radar, he will mature into a very impressive sire.

**June 2025 Australasian Charolais Breedplan**

	Birth Wt.	200 Day	400 Day	600 Day	Mat. Cow	Milk (kg)	Carcase	EMA	Rib Fat	Rump Fat	Beef Yield	IMF
EBV	+1.4	+14	+27	+37	+51	+6	+26	+2.8	-0.1	-0.4	+1.1	-0.3
Acc	52%	57%	51%	51%	47%	42%	40%	29%	35%	33%	29%	28%

Purchaser: Price: \$.....

Lot 42**Bauhinia Park Union**

ID: BAU23U163E **Birth Date:** 14/09/2023
Colour: White **DNA:** N/T

S: Kenmere Nuptune (P)
Sire: Bauhinia Park Red Line
D: Bauhinia Park Natalie 13 (P)

S: ANC Lastovski
Dam: Bauhinia Park Leah 17
D: Bauhinia Park Leah 9 (P)

Comments: Well bred young bull by Red Line out of a wonderful Lastovski daughter who is breeding well for us. Another youngster with plenty to offer.

H2h

June 2025 Australasian Charolais Breedplan

	Birth Wt.	200 Day	400 Day	600 Day	Mat. Cow	Milk (kg)	Carcase	EMA	Rib Fat	Rump Fat	Beef Yield	IMF
EBV	-0.2	+13	+26	+40	+49	+13	+29	+3.0	-0.9	-1.5	+1.5	-0.4
Acc	52%	59%	53%	53%	48%	43%	43%	33%	40%	39%	34%	32%

Purchaser: Price: \$.....

Lot 43**Bauhinia Park Unit (P) (R/F)**

ID: BAU23U80E **Birth Date:** 14/10/2023
Colour: Red factor **DNA:** N/T

S: Moongool Jag (P)
Sire: 4 Ways Mario (P)
D: 4 Ways Annette D72E

S: Fernvale Black Adder
Dam: Bauhinia Park Leah 8
D: Bauhinia Park Leah 5 (P)

Comments: Stylish young red polled Mario son with that little bit of X factor about him. Long and level with defined hams and sire's outlook.

**June 2025 Australasian Charolais Breedplan**

	Birth Wt.	200 Day	400 Day	600 Day	Mat. Cow	Milk (kg)	Carcase	EMA	Rib Fat	Rump Fat	Beef Yield	IMF
EBV	+1.2	+9	+23	+29	+36	+7	+22	+2.9	-0.1	-0.4	+0.9	+0.2
Acc	53%	64%	58%	59%	56%	51%	48%	34%	40%	39%	35%	32%

Purchaser: Price: \$.....

Lot 44**Bauhinia Park Undertaker (P) (R/F)**

ID: BAU23U168E **Birth Date:** 1/11/2023
Colour: Red factor **DNA:** N/T

S: GDA Parfait (P)
Sire: Moongool Mr R251 (P)
D: Moongool J318C

S: Keys All State 149X (P)
Dam: Bauhinia Park Omen 14
D: Bauhinia Park Omen 10

Comments: A great way to finish the Charolais run, youngest bull in the draft but he is all quality! Bone, depth, softness and thickness. Please note this bull is broken coloured.

**June 2025 Australasian Charolais Breedplan**

	Birth Wt.	200 Day	400 Day	600 Day	Mat. Cow	Milk (kg)	Carcase	EMA	Rib Fat	Rump Fat	Beef Yield	IMF
EBV	+1.4	+14	+27	+37	+41	+4	+25	+2.0	-0.5	-1.3	+1.0	-0.4
Acc	54%	59%	54%	56%	53%	45%	45%	33%	40%	39%	35%	32%

Purchaser: Price: \$.....

Lot 45**Withdrawn**

H2h

Charolais Carcase Comp Success!

- **Highest overall MSA Indexing steer**
- 3rd highest MSA indexing heifer
- 2nd place carcass results, Steer 341-450kg
- 2nd place carcass results, Heifer 281-340kg

Freestone Feedlot, QLD



The Next Generation...

Bauhinia Park Tribute

(P) (R/F) (BPA-F)



Mario x Lastovski x Dozer Bloodlines -

Home bred sire retained as the standout calf from last year's bull drop.

Venturon Talladega

(PP) (R/F) (BPA-F)



Palgrove Landmark x Palgrove Clara D211 -

Purchased for \$50,000 from Venturon Stud. Reports are his first calves over in WA look outstanding!

Awesome New Stud Sires!

Gandy Paratrooper T53



Millah Murrah Paratrooper Son - Was originally used as a yearling in WA. Gandy Angus have reported some awesome calves on the ground.

Gandy Man In Black U148



Man In Black Son - 20 months old in the above photo.
As nice a young bull as you can see, holding up really well here in Emerald.

Bauhinia Park Genetics Rise to the Top



A/c Mt Flora Cattle Co, Nebo - Both the weaner steers and heifers won their classes at the Sarina Feeder & Weaner Sale.



A/c Gowing Family, Ilfracombe.



A/c Ian & De-Anne Kirby, Emerald.



A/c Whitehead Pastoral Co, Springsure.

Thank you to everyone who sent us photos -
We love hearing feedback and seeing photos of progeny out of our bulls!
(Please feel free to send photos through, either by text, email or Facebook.)



Mentmore Grazing won Champion Pen of Steers -
Sarina Feeder & Weaner Sale - No. 5 Brangus Steers.



A/c Scott & Anne Harrold, Springsure.



A/c Gowing Family, Ilfracombe.



Bauhinia Park 2025 weaner stud heifers.



A/c Ian & De-Anne Kirby, Emerald.



A/c John Collins, Gogango.



Bauhinia Park 2025 weaner stud heifers.

Angus Bulls

Lots 46-90



2025 Sale Bull - Lot 47 - Bauhinia Park M38 U137

Welcome to the Angus section of our sale.

As mentioned last year, Bauhinia Park Angus is a little newer than the twenty-one years we have been holding our own sale. Initially we were straight Charolais (now transitioned to Ryan and Rachel) and while Raelea and I still love the Charolais breed and their crossbreeding prowess, equally we could see where Angus too would play a very important role in the beef industry.

Fifteen or so years on from developing an Angus stud specifically with Central Queensland cattle needs in mind, we are proud to present this year's draft of bulls. Bred from multiple generations of cows that have proven they belong here, these cows provide us with a base from which sons and daughters have the predictability required to meet industry objectives, with the added certainty of their bull progenies adaption to our region.

Without doubt and as quoted so many times, depth of breeding is so important in maintaining a cow herd that will breed consistent, value adding bulls for you, the commercial breeders that fuel our industry. Of course it's not easy, and while being unrelenting for the need for adaption to our CQ environment, we also must be able to produce bulls that put progeny on the ground that meet the current beef industry carcass requirements. We love this challenge, and take it very seriously so we can provide you with bulls that will help you produce calves that fulfill market specifications from weaners, backgrounders, and to bullocks if required.

For the bulls presented at this our 2025 sale, we believe they are in a class of their own for our Angus' stud point of view. They are even throughout, structurally correct, nicely balanced for carcass and performance, plenty of weight for age, clean coated and ready to go out and work.

We look forward to catching up with everyone at the sale. As was said in the opening, should you not be able to attend then you will be able to follow us, view the sale, and bid if required on AuctionsPlus.

Jeff & Raelea Holzward



Reference Sires

Bauhinia Park M38



Bauhinia Park M38 as a 6-year-old.

S: SAV Thunderbird 9061
Sire: Glenmorgan Thunderbird H248
D: Wattletop Dandloo A129

S: Booroomooka Net Worth G10
Dam: Bauhinia Park J93
D: Bauhinia Park G16

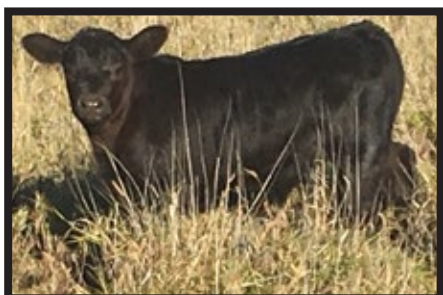
M38 is the son of a bull we had a lot of success with in H248 (many knew him by his nickname 'Gus'). We retained M38 as we believed he was such a complete animal due to his structure, muscle pattern, overall appeal and 'do-ability'. He has not disappointed. His sons in this sale are a testament to this.

Likewise, his females are beauties with great udders, and are producing really well almost regardless of the sires we put over them.

Unfortunately M38 was lost to us last year, and only very lightly used the prior year. So this will be the last year of his sons. His bloodlines you will see in his females for generations to come though such was his stamp.

Mid July 2025 TransTasman Angus Cattle Evaluation

	Birth Wt.	200 Day	400 Day	600 Day	Mat. Cow	Milk (kg)	Carcase	EMA	Rib Fat	Rump Fat	Beef Yield	IMF
EBV	+7.8	+67	+117	+150	+163	+10	+75	+0.8	-1.9	-2.3	+0.9	-0.8
Acc	87%	89%	85%	87%	81%	74%	75%	65%	67%	68%	56%	71%



M38 as a calf.



M38.



S67 (M38 Son) - his sons will be predominant in next year's sale.

Reference Sires

Bauhinia Park Reaction R76



Bauhinia Park Harvestor N57 - Sire of Bauhinia Park Reaction R76

S: Kansas Aberdeen L82
Sire: Bauhinia Park Harvestor N57
D: Bauhinia Miss Net Worth K43

S: Unknown
Dam: Bauhinia Park H167
D: Bauhinia Park D352

R76 was a young bull we kept for his sheer capacity and perfect structure. His sire N57 caught a lot of people's eye, and has some very good breeding females in our herd. R76 sons in this year's sale certainly justify us keeping him. We suspect his sons' physical scans, due to be done before sale day, will show these sons have carcase merit and weight gain attributes worth chasing.

His sons are robust free moving types just made to do a lot of work, and should retain great shape as R76 has.

Mid July 2025 TransTasman Angus Cattle Evaluation

	Birth Wt.	200 Day	400 Day	600 Day	Mat. Cow	Milk (kg)	Carcase	EMA	Rib Fat	Rump Fat	Beef Yield	IMF
EBV	+6.6	+52	+103	+145	+142	+17	+73	+10.0	-0.8	-4.0	+1.7	+0.7
Acc	80%	82%	81%	83%	78%	70%	70%	63%	64%	65%	53%	69%



Reaction R76 at 18 months.



Reaction R76 Son - Lot 48 in this year's sale.



Reaction R76 Son - Lot 49 in this year's sale.

Lot 46**Bauhinia Park Unify U149**

ID: ART23U149
Registered MBR Bull

Birth Date: 4/09/2023
Colour: Black

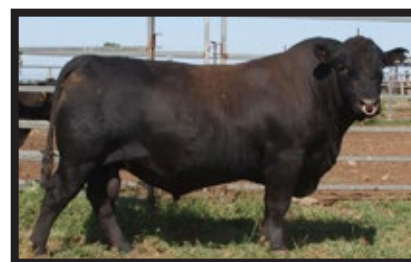
S: Glenmorgan Thunderbird Man H248
Sire: Bauhinia Park Thunderbird M38
D: Bauhinia Park J93

S: Bauhinia J275
Dam: Bauhinia Park Loyola M14
D: Bauhinia Miss Don J30



Comments: Great way to kick off the Angus. Top shelf son of M38 who has been the best sire to have graced our Angus stud. Numerous M38 daughters are retained. This bull's dam M14 is a beautiful easy keeping female that always raises a good weaner. Pedigree suggests suitable for use on heifers.

Pictured right: Glenmorgan Thunderbird Man H248 'Gus' - Grandsire of Lots 46, 47, 56, 60, 61, 68, 73, 74, 77, 79, 82, 83 and 89.

**Mid July 2025 TransTasman Angus Cattle Evaluation**

	Birth Wt.	200 Day	400 Day	600 Day	Mat. Cow	Milk (kg)	Carcase	EMA	Rib Fat	Rump Fat	Beef Yield	IMF
EBV	+6.0	+53	+96	+124	+119	+12	+65	+2.3	-0.9	-1.2	+1.0	-0.2
Acc	62%	65%	64%	71%	61%	53%	56%	50%	52%	52%	44%	55%

Purchaser: Price: \$.....

Lot 47**Bauhinia Park M38 U137**

ID: ART23U137
Registered APR Bull

Birth Date: 30/08/2023
Colour: Black

S: Glenmorgan Thunderbird Man H248
Sire: Bauhinia Park Thunderbird M38
D: Bauhinia Park J93

S: S S Niagara Z29
Dam: Bauhinia Park Daria N23
D: Bauhinia Park J93



Comments: Another very neat and fleshy M38 son who stands out in the pen for his extra volume and thickness. Niagara and Net Worth on his dam's side suggests exceptional consistency in his breeding. One of our favourites.

Pictured right: S S Niagara Z29 - Grandsire of Lot 47 and Great Grandsire of Lot 81.

**Mid July 2025 TransTasman Angus Cattle Evaluation**

	Birth Wt.	200 Day	400 Day	600 Day	Mat. Cow	Milk (kg)	Carcase	EMA	Rib Fat	Rump Fat	Beef Yield	IMF
EBV	+6.1	+61	+108	+139	+139	+15	+76	+4.3	-1.5	-1.5	+0.9	0.0
Acc	67%	70%	67%	73%	65%	59%	59%	56%	58%	58%	50%	61%

Purchaser: Price: \$.....

Lot 48**Bauhinia Park U120**

ID: ART23U120
Registered MBR Bull

Birth Date: 30/08/2023
Colour: Black

S: Bauhinia Park Harvester N57
Sire: Bauhinia Park Reaction R76
D: Bauhinia Park H167

S: Bauhinia Park Thunderbird M38
Dam: Bauhinia Park R62
D: Bauhinia K203



Comments: Awesome carcase attributes in this bull. His sire R76 was a young bull we kept for his sheer capacity and perfect structure. Out of an M38 daughter. One of the classiest bulls in the draft that will add a lot to his offspring.

Pictured right: Bauhinia Park Harvester N57 - Grandsire of Lots 48, 49, 55, 57, 66, 67, 70, 80 and 81.

**Mid July 2025 TransTasman Angus Cattle Evaluation**

	Birth Wt.	200 Day	400 Day	600 Day	Mat. Cow	Milk (kg)	Carcase	EMA	Rib Fat	Rump Fat	Beef Yield	IMF
EBV	+6.2	+55	+103	+141	+138	+13	+73	+5.4	-0.8	-2.9	+1.2	+0.2
Acc	61%	64%	61%	68%	59%	54%	53%	51%	53%	53%	45%	57%

Purchaser: Price: \$.....

Lot 49**Bauhinia Park U109**

ID: ART23U109
Registered APR Bull

Birth Date: 22/08/2023
Colour: Black

S: Bauhinia Park Harvester N57
Sire: Bauhinia Park Reaction R76
D: Bauhinia Park H167

S: Dance Emperor 343 J198
Dam: Bauhinia Park R39
D: Dance K292



Comments: A super eye catching R76 son out of a very predictable Emperor bred cow. A bull we have had three ticks on since a young age. Shows extra depth and a great profile whilst being free moving with loads of meat.

**Mid July 2025 TransTasman Angus Cattle Evaluation**

	Birth Wt.	200 Day	400 Day	600 Day	Mat. Cow	Milk (kg)	Carcase	EMA	Rib Fat	Rump Fat	Beef Yield	IMF
EBV	+6.2	+53	+100	+137	+133	+15	+73	+7.5	-1.6	-4.2	+1.4	+1.4
Acc	61%	63%	61%	68%	59%	53%	53%	51%	53%	53%	45%	57%

Purchaser: Price: \$.....

ID: ABW23U441 **Birth Date:** 25/08/2023
Registered HBR Bull **Colour:** Black

S: G A R Inertia
Sire: 3RLS Inertia R002
D: Texas Toque M396

S: S Powerpoint WS 5503
Dam: Glenmorgan Powerpoint Lady R214
D: Wattletop Barwon D296



Comments: Classy animal. Pleasing on the eye and full of meat with a beautiful slick skin type. Very predicable pedigree. Pedigree suggests suitable for use on heifers.

Pictured right: S Powerpoint WS 5503 - Grandsire of Lots 50, 54, 64 and 72.


Mid July 2025 TransTasman Angus Cattle Evaluation

	Birth Wt.	200 Day	400 Day	600 Day	Mat. Cow	Milk (kg)	Carcase	EMA	Rib Fat	Rump Fat	Beef Yield	IMF
EBV	+3.3	+54	+94	+124	+122	+10	+65	+3.2	+0.1	0.0	-0.4	+2.6
Acc	82%	82%	80%	81%	78%	74%	69%	68%	68%	69%	59%	73%

Purchaser: Price: \$.....

ID: ABW23U474 **Birth Date:** 29/08/2023
Registered HBR Bull **Colour:** Black

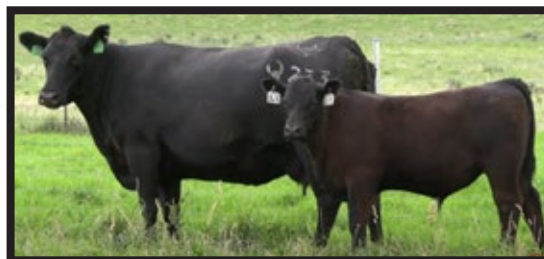
S: Musgrave Big Sky
Sire: Glenmorgan Big Sky Man P249
D: Glenmorgan Berkley Lady K451

S: Lawsons Momentous M518
Dam: Glenmorgan Momentous Lady Q233
D: Glenmorgan Reality Lady M109



Comments: Similar to Lot 50 - heavy bodied and out of a Big Sky son this time, very correct. Big Sky bloodlines have worked so well for us.

Pictured right: U474 as a calf with his dam Q233.


Mid July 2025 TransTasman Angus Cattle Evaluation

	Birth Wt.	200 Day	400 Day	600 Day	Mat. Cow	Milk (kg)	Carcase	EMA	Rib Fat	Rump Fat	Beef Yield	IMF
EBV	+6.4	+58	+96	+122	+96	+19	+67	+2.7	-2.3	-1.4	-0.4	+2.8
Acc	82%	83%	81%	82%	79%	75%	70%	70%	69%	71%	61%	75%

Purchaser: Price: \$.....

Lot 52**Bauhinia Park GM U438**

ID: ABW23U438
Registered APR Bull

Birth Date: 21/08/2023
Colour: Black

S: G A R Inertia
Sire: 3RLS Inertia R002
D: Texas Toque M396

S: Glenmorgan General Man N211
Dam: Glenmorgan G188 N45 Lady R167
D: Glenmorgan Prophet Lady P382



Comments: Outlook, meat and structure. Super slick coated to boot. All the ingredients of a nice young sire. Pedigree suggests suitable for use on heifers.

Mid July 2025 TransTasman Angus Cattle Evaluation

	Birth Wt.	200 Day	400 Day	600 Day	Mat. Cow	Milk (kg)	Carcase	EMA	Rib Fat	Rump Fat	Beef Yield	IMF
EBV	+2.2	+52	+84	+106	+92	+11	+57	+3.2	+3.0	+2.4	-0.3	+1.5
Acc	81%	82%	80%	81%	78%	74%	68%	68%	67%	69%	58%	73%

Purchaser: Price: \$.....

Lot 53**Bauhinia Park GM U180**

ID: ABW23U180
Registered HBR Bull

Birth Date: 28/08/2023
Colour: Black

S: Ben Nevis Newsflash N239
Sire: Ben Nevis Rambo R230
D: Ben Nevis Celeste J121

S: G A R Home Town
Dam: Glenmorgan Hometown Lady S357
D: Glenmorgan Franklin Lady P225



Comments: Great set of breedplan numbers showing top 3% in the breed for EMA & IMF. Pedigree suggests suitable for use on heifers.

Mid July 2025 TransTasman Angus Cattle Evaluation

	Birth Wt.	200 Day	400 Day	600 Day	Mat. Cow	Milk (kg)	Carcase	EMA	Rib Fat	Rump Fat	Beef Yield	IMF
EBV	+4.5	+57	+97	+126	+85	+23	+76	+11.9	-4.1	-7.4	+1.2	+5.7
Acc	82%	83%	81%	82%	79%	75%	71%	71%	70%	71%	62%	75%

Purchaser: Price: \$.....

ID: ABW23U458 **Birth Date:** 25/08/2023
Registered APR Bull **Colour:** Black

S: S Powerpoint WS 5503
Sire: Glenmorgan Powerpoint Man R262
D: Wattletop Usual G236

S: Matauri Reality 839
Dam: Glenmorgan Reality Lady N258
D: Glenmorgan Berkley Lady K461



Comments: Breedplan shows lower birth, and nice even numbers with a bit more IMF.
 Pedigree suggests suitable for use on heifers.

Mid July 2025 TransTasman Angus Cattle Evaluation

	Birth Wt.	200 Day	400 Day	600 Day	Mat. Cow	Milk (kg)	Carcase	EMA	Rib Fat	Rump Fat	Beef Yield	IMF
EBV	+2.0	+45	+90	+114	+94	+11	+55	+4.1	+4.1	+5.2	-1.4	+4.2
Acc	82%	83%	81%	81%	78%	74%	69%	69%	68%	70%	60%	74%

Purchaser: Price: \$.....

ID: ART23U25 **Birth Date:** 20/08/2023
Registered APR Bull **Colour:** Black

S: Dance Emperor 343 J198
Sire: Dance Emperor Q114
D: Dance K292

S: Bauhinia Park Harvestor N57
Dam: Bauhinia Park Miss N57 S104
D: Bauhinia Park J302



Comments: Neat young sire out of a first calf heifer. Appealing outlook. Will produce nice even weaners.
 Pedigree suggests suitable for use on heifers.

*Pictured right: Dance Emperor Q114 -
 Sire of Lots 55, 78 and 85.*


Mid July 2025 TransTasman Angus Cattle Evaluation

	Birth Wt.	200 Day	400 Day	600 Day	Mat. Cow	Milk (kg)	Carcase	EMA	Rib Fat	Rump Fat	Beef Yield	IMF
EBV	+4.3	+45	+79	+102	+82	+13	+53	+5.6	-1.6	-3.8	+1.1	+1.9
Acc	64%	66%	63%	64%	62%	55%	55%	54%	55%	56%	48%	59%

Purchaser: Price: \$.....

Lot 56**Bauhinia Park Urippa U106**

ID: ART23U106
Registered MBR Bull

Birth Date: 24/08/2023
Colour: Black

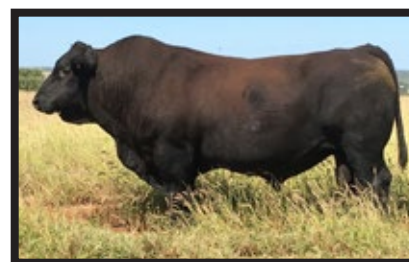
S: Glenmorgan Thunderbird Man H248
Sire: Bauhinia Park Thunderbird M38
D: Bauhinia Park J93

S: Bauhinia Park H55
Dam: Bauhinia Park Loyola P121
D: Bauhinia Park H167



Comments: Check out the performance here on the awesome growth EBV's. Lovely long alert bull. Will cover some country. Clean coated. By M38 out of female royalty at Bauhinia Park Angus.

Pictured right: Bauhinia Park H55 - Grandsire of Lot 56.

**Mid July 2025 TransTasman Angus Cattle Evaluation**

	Birth Wt.	200 Day	400 Day	600 Day	Mat. Cow	Milk (kg)	Carcase	EMA	Rib Fat	Rump Fat	Beef Yield	IMF
EBV	+8.7	+67	+120	+166	+173	+15	+90	+3.4	-1.6	-2.6	+1.1	-0.6
Acc	62%	65%	65%	71%	62%	53%	56%	49%	52%	52%	43%	54%

Purchaser: Price: \$.....

Lot 57**Bauhinia Park U121**

ID: ART23U121
Registered MBR Bull

Birth Date: 30/08/2023
Colour: Black

S: Bauhinia Park Harvestor N57
Sire: Bauhinia Park Reaction R76
D: Bauhinia Park H167

S: JMB Traction 292
Dam: Bauhinia Park Miss Traction Q50
D: Bauhinia Miss Net Worth K35



Comments: Another R76 son, out of a classy young cow. Hard to see how his progeny would disappoint.

Pictured right: JMB Traction 292 - Grandsire of Lots 57 and 82.

**Mid July 2025 TransTasman Angus Cattle Evaluation**

	Birth Wt.	200 Day	400 Day	600 Day	Mat. Cow	Milk (kg)	Carcase	EMA	Rib Fat	Rump Fat	Beef Yield	IMF
EBV	+5.6	+51	+95	+130	+119	+19	+67	+10.5	-1.4	-3.5	+1.6	+1.0
Acc	63%	65%	62%	69%	61%	56%	55%	53%	55%	55%	48%	59%

Purchaser: Price: \$.....

ID: ABW23U377 **Birth Date:** 6/08/2023
Registered APR Bull **Colour:** Black

S: Lawsons Momentus M518
Sire: Murdeduke Quarterback Q011
D: Murdeduke Barunah N026

S: Wattletop G188 N45
Dam: Glenmorgan G188 45 Lady Q379
D: Glenmorgan All In Lady L429



Comments: Big strong Quarterback Q011 son. Back to a nice Wattletop cow line.
 Pedigree suggests suitable for use on heifers.

Mid July 2025 TransTasman Angus Cattle Evaluation

	Birth Wt.	200 Day	400 Day	600 Day	Mat. Cow	Milk (kg)	Carcase	EMA	Rib Fat	Rump Fat	Beef Yield	IMF
EBV	+3.6	+56	+108	+147	+115	+29	+78	+7.0	-2.5	-1.9	+0.6	+1.1
Acc	82%	83%	81%	82%	79%	78%	72%	71%	71%	72%	62%	75%

Purchaser: Price: \$.....

ID: ABW23U419 **Birth Date:** 8/08/2023
Registered HBR Bull **Colour:** Black

S: Lawsons Momentus M518
Sire: Murdeduke Quarterback Q011
D: Murdeduke Barunah N026

S: SAV Raindance 6848
Dam: Glenmorgan Raindance Lady Q201
D: Wattletop Ann F88



Comments: Half brother to previous lot. Again the consistent Wattletop breeding behind his dam line.
 Pedigree suggests suitable for use on heifers.

*Pictured right: SAV Raindance 6848 -
 Grandsire of Lot 59.*


Mid July 2025 TransTasman Angus Cattle Evaluation

	Birth Wt.	200 Day	400 Day	600 Day	Mat. Cow	Milk (kg)	Carcase	EMA	Rib Fat	Rump Fat	Beef Yield	IMF
EBV	+4.3	+53	+99	+130	+112	+17	+69	+2.1	+1.2	+2.3	-0.8	+4.0
Acc	83%	84%	82%	83%	80%	77%	73%	73%	72%	73%	64%	76%

Purchaser: Price: \$.....

ID: ART23U108 **Birth Date:** 23/08/2023
Registered MBR Bull **Colour:** Black

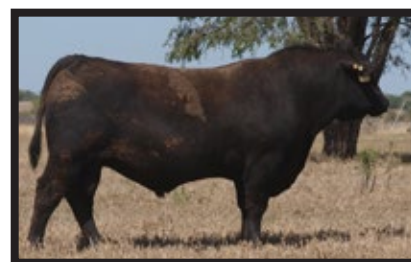
S: Glenmorgan Thunderbird Man H248
Sire: Bauhinia Park Thunderbird M38
D: Bauhinia Park J93

S: Booroomooka Net Worth G10
Dam: Bauhinia Miss Jessie K18
D: Bauhinia Park D305



Comments: M38 son out of a consistent breeding female line. Very even throughout.

Pictured right: Booroomooka Net Worth G10 - Grandsire of Lot 60.


Mid July 2025 TransTasman Angus Cattle Evaluation

	Birth Wt.	200 Day	400 Day	600 Day	Mat. Cow	Milk (kg)	Carcase	EMA	Rib Fat	Rump Fat	Beef Yield	IMF
EBV	+6.2	+52	+94	+124	+127	+12	+66	+4.0	-0.6	-1.1	+1.4	-0.3
Acc	65%	68%	65%	71%	64%	58%	57%	52%	55%	55%	46%	57%

Purchaser: Price: \$.....

ID: ART23U110 **Birth Date:** 23/08/2023
Registered APR Bull **Colour:** Black

S: Glenmorgan Thunderbird Man H248
Sire: Bauhinia Park Thunderbird M38
D: Bauhinia Park J93

S: T&R Creed J42
Dam: Bauhinia Park Loyola M76
D: Bauhinia Park D310



Comments: Classy young M38 son with a bit of extra length, growth, and scale. Very free moving and out of a cow who always produces one of the top calves. We really appreciate this young sire.

Mid July 2025 TransTasman Angus Cattle Evaluation

	Birth Wt.	200 Day	400 Day	600 Day	Mat. Cow	Milk (kg)	Carcase	EMA	Rib Fat	Rump Fat	Beef Yield	IMF
EBV	+7.0	+55	+97	+126	+134	+13	+68	+2.2	-1.2	-1.5	+1.0	-0.5
Acc	61%	64%	64%	70%	62%	54%	55%	45%	48%	49%	40%	51%

Purchaser: Price: \$.....

Lot 62**Bauhinia Park GM U499**

ID: ABW23U499 **Birth Date:** 7/09/2023
Registered APR Bull **Colour:** Black

S: Ayrvale General G18
Sire: Glenmorgan General Man N206
D: Wattletop Usual H380

S: SAV 707 Rito 9969
Dam: Dance Rito 9969 K6
D: Dance Henry D217

Comments: Consistent breeding again in this young sire.
 Lots to like. Should put nice weaners on the ground.

**Mid July 2025 TransTasman Angus Cattle Evaluation**

	Birth Wt.	200 Day	400 Day	600 Day	Mat. Cow	Milk (kg)	Carcase	EMA	Rib Fat	Rump Fat	Beef Yield	IMF
EBV	+6.2	+54	+97	+127	+126	+14	+74	+0.1	-2.0	-2.7	+0.4	+2.0
Acc	82%	83%	80%	81%	78%	74%	71%	69%	69%	71%	61%	74%

Purchaser: Price: \$.....

Lot 63**Bauhinia Park GM U481**

ID: ABW23U481 **Birth Date:** 30/08/2023
Registered HBR Bull **Colour:** Black

S: Musgrave Big Sky
Sire: Glenmorgan Big Sky Man P284
D: Glenmorgan Right Time Lady G249

S: Ayrvale General G18
Dam: Glenmorgan General Lady P394
D: Glenmorgan Traction Lady L288

Comments: Big Sky breeding influence again. Very hard
 to go wrong with his sire and dam pedigree.

**Mid July 2025 TransTasman Angus Cattle Evaluation**

	Birth Wt.	200 Day	400 Day	600 Day	Mat. Cow	Milk (kg)	Carcase	EMA	Rib Fat	Rump Fat	Beef Yield	IMF
EBV	+5.0	+57	+103	+134	+138	+18	+79	+11.8	-4.0	-4.8	+1.7	+1.5
Acc	81%	82%	80%	81%	78%	74%	70%	69%	69%	70%	60%	74%

Purchaser: Price: \$.....

Lot 64**Bauhinia Park GM U449**

ID: ABW23U449 **Birth Date:** 25/08/2023
Registered HBR Bull **Colour:** Black

S: S Powerpoint WS 5503
Sire: Glenmorgan Powerpoint Man R253
D: Glenmorgan Discovery Lady N251

S: Matauri Reality 839
Dam: Glenmorgan Reality Lady N263
D: Glenmorgan Berkley Lady K453

Comments: Pedigree contains Powerpoint, Reality, Right
 Time, Berkley G13. All exceptional sires in their own right.
 Pedigree suggests suitable for use on heifers.

**Mid July 2025 TransTasman Angus Cattle Evaluation**

	Birth Wt.	200 Day	400 Day	600 Day	Mat. Cow	Milk (kg)	Carcase	EMA	Rib Fat	Rump Fat	Beef Yield	IMF
EBV	+3.1	+50	+103	+128	+150	+6	+58	+3.2	+1.7	+1.3	-0.8	+4.2
Acc	82%	83%	81%	82%	79%	75%	70%	70%	69%	70%	61%	74%

Purchaser: Price: \$.....

Lot 65**Bauhinia Park GM U482**

ID: ABW23U482 **Birth Date:** 31/08/2023
Registered APR Bull **Colour:** Black

S: Wattletop Franklin G188
Sire: Wattletop G188 N45
D: Wattletop Usual L236

S: Deer Valley Patriot 3222
Dam: Glenmorgan Patriot Lady N394
D: Glenmorgan C14

Comments: Very even young sire - a lot of Wattletop bloodlines in his background.

*Videos of 2025 Sale Bulls will
be available via our Website
closer to the Sale!*

*Follow us on Facebook
for updates.*

Mid July 2025 TransTasman Angus Cattle Evaluation

	Birth Wt.	200 Day	400 Day	600 Day	Mat. Cow	Milk (kg)	Carcase	EMA	Rib Fat	Rump Fat	Beef Yield	IMF
EBV	+5.2	+57	+98	+127	+125	+20	+79	+2.8	-3.8	-5.1	+0.6	+0.7
Acc	81%	82%	80%	81%	78%	73%	69%	68%	68%	69%	59%	73%

Purchaser: Price: \$.....

Lot 66**Bauhinia Park U145**

ID: ART23U145 **Birth Date:** 2/09/2023
Registered MBR Bull **Colour:** Black

S: Bauhinia Park Harvester N57
Sire: Bauhinia Park Reaction R76
D: Bauhinia Park H167

S: XLBeef Traction M60
Dam: Bauhinia Park Fancy R17
D: Bauhinia Park Fancy N99

Comments: Another beefy R76 son. Will add weight where needed.

**Mid July 2025 TransTasman Angus Cattle Evaluation**

	Birth Wt.	200 Day	400 Day	600 Day	Mat. Cow	Milk (kg)	Carcase	EMA	Rib Fat	Rump Fat	Beef Yield	IMF
EBV	+6.2	+55	+104	+141	+138	+16	+70	+6.8	-1.2	-2.9	+1.0	+0.8
Acc	61%	63%	61%	68%	59%	53%	53%	51%	53%	53%	45%	56%

Purchaser: Price: \$.....

Lot 67**Bauhinia Park U153**

ID: ART23U153 **Birth Date:** 12/09/2023
Registered MBR Bull **Colour:** Black

S: Bauhinia Park Harvester N57
Sire: Bauhinia Park Reaction R76
D: Bauhinia Park H167

S: Bauhinia Park Thunderbird M38
Dam: Bauhinia Park R36
D: Bauhinia Park J99

Comments: Similar to the last lot. R76 out of a M38 cow this time. We so love this cross.

**Mid July 2025 TransTasman Angus Cattle Evaluation**

	Birth Wt.	200 Day	400 Day	600 Day	Mat. Cow	Milk (kg)	Carcase	EMA	Rib Fat	Rump Fat	Beef Yield	IMF
EBV	+6.1	+51	+97	+133	+132	+15	+68	+7.1	-0.6	-2.5	+1.5	+0.2
Acc	62%	64%	62%	69%	60%	54%	54%	51%	53%	54%	45%	57%

Purchaser: Price: \$.....

Lot 68**Bauhinia Park M38 U147**

ID: ART23U147 **Birth Date:** 28/08/2023
Registered MBR Bull **Colour:** Black

S: Glenmorgan Thunderbird Man H248
Sire: Bauhinia Park Thunderbird M38
D: Bauhinia Park J93

S: Glenmorgan Thunderbird Man H248
Dam: Bauhinia Park Loyola M87
D: Bauhinia A3

Comments: 7/8 Angus, 1/8 Brangus - very clean coated.
 Retains an Angus influenced outlook.

**Mid July 2025 TransTasman Angus Cattle Evaluation**

	Birth Wt.	200 Day	400 Day	600 Day	Mat. Cow	Milk (kg)	Carcase	EMA	Rib Fat	Rump Fat	Beef Yield	IMF
EBV	+6.6	+57	+102	+132	+132	+11	+71	+2.1	-1.1	-1.6	+1.0	-0.3
Acc	62%	66%	65%	72%	62%	55%	57%	49%	52%	52%	44%	55%

Purchaser: Price: \$.....

Lot 69**Bauhinia Park U300**

ID: ART23U300 **Birth Date:** 15/09/2023
Herd Bull **Colour:** Black

S: BWCC Big Town 192 B16
Sire: Telpara Hills Heavy Duty 99P5
D: Oaks Miss Csonka 99B54

S:
Dam: Bauhinia Park Q208
D:

Comments: 7/8 Angus, 1/8 Brangus - again clean coated
 and supports lots of Angus attributes.

**Mid July 2025 TransTasman Angus Cattle Evaluation**

	Birth Wt.	200 Day	400 Day	600 Day	Mat. Cow	Milk (kg)	Carcase	EMA	Rib Fat	Rump Fat	Beef Yield	IMF
EBV	-	-	-	-	-	-	-	-	-	-	-	-
Acc	-	-	-	-	-	-	-	-	-	-	-	-

Lot 70**Bauhinia Park U130**

ID: ART23U130 **Birth Date:** 28/08/2023
Registered MBR Bull **Colour:** Black

S: Bauhinia Park Harvester N57
Sire: Bauhinia Park Reaction R76
D: Bauhinia Park H167

S: Bauhinia Park Thunderbird M38
Dam: Bauhinia Park Rosie Q101
D: Bauhinia Miss Uptake J15

Comments: Almost a twin in his breeding to Lot 67 -
 progeny should be so predictable.
 Pedigree suggests suitable for use on heifers.

**Mid July 2025 TransTasman Angus Cattle Evaluation**

	Birth Wt.	200 Day	400 Day	600 Day	Mat. Cow	Milk (kg)	Carcase	EMA	Rib Fat	Rump Fat	Beef Yield	IMF
EBV	+5.4	+48	+91	+118	+115	+15	+60	+5.6	-0.5	-2.0	+1.2	+0.6
Acc	62%	64%	62%	68%	60%	54%	53%	51%	53%	53%	45%	56%

Purchaser: Price: \$.....

Lot 71**Bauhinia Park GM U183**

ID: ABW23U183 **Birth Date:** 30/08/2023
Registered HBR Bull **Colour:** Black

S: G A R Home Town
Sire: Glenmorgan Hometown Man S305
D: Glenmorgan Big Sky Lady P295

S: Musgrave 316 Exclusive
Dam: Glenmorgan Exclusive Lady S414
D: Glenmorgan Reality Lady M107

Comments: Nice temperament young sire. Even spread of EBV's. Good EMA and IMF.
 Pedigree suggests suitable for use on heifers.

**Mid July 2025 TransTasman Angus Cattle Evaluation**

	Birth Wt.	200 Day	400 Day	600 Day	Mat. Cow	Milk (kg)	Carcase	EMA	Rib Fat	Rump Fat	Beef Yield	IMF
EBV	+6.6	+62	+103	+137	+139	+20	+74	+10.3	-1.9	-3.4	+1.1	+2.1
Acc	81%	82%	80%	81%	78%	73%	68%	68%	67%	69%	59%	72%

Purchaser: Price: \$.....

Lot 72**Bauhinia Park GM U468**

ID: ABW23U468 **Birth Date:** 28/08/2023
Registered APR Bull **Colour:** Black

S: S Powerpoint WS 5503
Sire: Glenmorgan Powerpoint R262
D: Wattletop Usual G236

S: Deer Valley Patriot 3222
Dam: Glenmorgan Patriot Lady N329
D: Glenmorgan E77

Comments: Nice even EBV's. Lower birth, good EMA and IMF.
 Pedigree suggests suitable for use on heifers.

Bid Card Pre-Registration Available!

1. Scan the QR code.
2. Enter your details.
3. On Sale Day, your Bid Card will be ready for you to collect from the Administration desk.

**Mid July 2025 TransTasman Angus Cattle Evaluation**

	Birth Wt.	200 Day	400 Day	600 Day	Mat. Cow	Milk (kg)	Carcase	EMA	Rib Fat	Rump Fat	Beef Yield	IMF
EBV	+1.8	+52	+94	+117	+90	+20	+63	+6.3	+3.1	+3.2	-0.8	+3.1
Acc	82%	82%	80%	81%	78%	74%	69%	69%	68%	70%	60%	73%

Purchaser: Price: \$.....

Lot 73**Bauhinia Park U122**

ID: ART23U122 **Birth Date:** 30/08/2023
Registered APR Bull **Colour:** Black

S: Glenmorgan Thunderbird Man H248
Sire: Bauhinia Park Thunderbird M38
D: Bauhinia Park J93

S: Bauhinia Park Upward L7
Dam: Bauhinia Park Nindy Q45
D: Bauhinia Park Nindy M93

Comments: Back to M38 this time. Out of a lovely L7 cow.
 Pedigree suggests suitable for use on heifers.

**Mid July 2025 TransTasman Angus Cattle Evaluation**

	Birth Wt.	200 Day	400 Day	600 Day	Mat. Cow	Milk (kg)	Carcase	EMA	Rib Fat	Rump Fat	Beef Yield	IMF
EBV	+6.0	+59	+103	+129	+127	+13	+73	+2.6	-1.4	-1.7	+0.9	-0.2
Acc	65%	67%	64%	70%	62%	56%	57%	53%	55%	56%	47%	58%

Purchaser: Price: \$.....

Lot 74**Bauhinia Park U179**

ID: ART23U179 **Birth Date:** 20/09/2023
Registered MBR Bull **Colour:** Black

S: Glenmorgan Thunderbird Man H248
Sire: Bauhinia Park Thunderbird M38
D: Bauhinia Park J93

S: Unknown
Dam: Bauhinia Park H167
D: Bauhinia Park D352

Comments: Clean coated mobile M38 son. Plenty of shape and natural doing ability here.

**Mid July 2025 TransTasman Angus Cattle Evaluation**

	Birth Wt.	200 Day	400 Day	600 Day	Mat. Cow	Milk (kg)	Carcase	EMA	Rib Fat	Rump Fat	Beef Yield	IMF
EBV	+7.1	+59	+110	+145	+155	+14	+77	+2.7	-0.7	-1.8	+1.0	-0.3
Acc	63%	66%	65%	71%	62%	55%	56%	49%	52%	52%	43%	55%

Purchaser: Price: \$.....

Lot 75**Bauhinia Park GM U466**

ID: ABW23U466 **Birth Date:** 28/08/2023
Registered APR Bull **Colour:** Black

S: Ayrvale General G18
Sire: Wattletop General N3
D: Wattletop Usual L109

S: Ayrvale Bartel E7
Dam: Glenmorgan Bartel Lady K100
D: Glenmorgan Right Answer H171

Comments: Wattletop bloodlines in this young bull. Supports a consistent spread of figures. Pedigree suggests suitable for use on heifers.

**Mid July 2025 TransTasman Angus Cattle Evaluation**

	Birth Wt.	200 Day	400 Day	600 Day	Mat. Cow	Milk (kg)	Carcase	EMA	Rib Fat	Rump Fat	Beef Yield	IMF
EBV	+3.6	+57	+104	+139	+100	+27	+73	+4.0	+2.2	+1.0	-0.2	+1.7
Acc	82%	83%	81%	81%	79%	75%	71%	70%	69%	71%	61%	74%

Purchaser: Price: \$.....

Lot 76**Bauhinia Park GM U286**

ID: ABW23U286 **Birth Date:** 30/07/2023
Registered HBR Bull **Colour:** Black

S: Tehama Patriarch F028
Sire: Tehama Testament
D: Tehama Mary Blackbird E789

S: SAV 707 Rito 9969
Dam: Glenmorgan Rito 9969 K520
D: SAV Emblynette 7310

Comments: Nice Angus outlook. Bloodlines support weaner production. Pedigree suggests suitable for use on heifers.

**Ben & Hayley Hutton, Clermont,
sold Angus Cross Steers to 424c/kg
and weighed 320kg
to return \$1357.**

Mid July 2025 TransTasman Angus Cattle Evaluation

	Birth Wt.	200 Day	400 Day	600 Day	Mat. Cow	Milk (kg)	Carcase	EMA	Rib Fat	Rump Fat	Beef Yield	IMF
EBV	+2.8	+47	+88	+109	+89	+21	+48	-2.2	+1.5	+1.9	-0.9	+1.5
Acc	83%	83%	82%	82%	78%	74%	71%	71%	70%	71%	62%	75%

Purchaser: Price: \$.....

Lot 77**Bauhinia Park U123**

ID: ART23U123 **Birth Date:** 28/08/2023
Registered MBR Bull **Colour:** Black

S: Glenmorgan Thunderbird Man H248
Sire: Bauhinia Park Thunderbird M38
D: Bauhinia Park J93

S: Dulverton Uptake U091
Dam: Bauhinia Park Miss Uptake J11
D: Bauhinia Park A4

Comments: Super sire M38 out of a lovely and very fertile Dulverton Uptake cow.

**Mid July 2025 TransTasman Angus Cattle Evaluation**

	Birth Wt.	200 Day	400 Day	600 Day	Mat. Cow	Milk (kg)	Carcase	EMA	Rib Fat	Rump Fat	Beef Yield	IMF
EBV	+6.3	+53	+98	+126	+137	+13	+68	+1.4	-1.0	-1.1	+0.9	-0.1
Acc	64%	67%	64%	70%	62%	57%	56%	51%	54%	54%	46%	56%

Purchaser: Price: \$.....

Lot 78**Bauhinia Park U32**

ID: ART23U32 **Birth Date:** 20/08/2023
Registered MBR Bull **Colour:** Black

S: Dance Emperor 343 J198
Sire: Dance Emperor Q114
D: Dance K292

S: Glenmorgan Big Sky Man P236
Dam: Bauhinia Park Loyola S11
D: Bauhinia Park Loyola P121

Comments: Neat young bull out of a first calf heifer. His sire Q114 was our resident heifer bull for three years. Pedigree suggests suitable for use on heifers.

**Mid July 2025 TransTasman Angus Cattle Evaluation**

	Birth Wt.	200 Day	400 Day	600 Day	Mat. Cow	Milk (kg)	Carcase	EMA	Rib Fat	Rump Fat	Beef Yield	IMF
EBV	+5.1	+51	+91	+117	+107	+16	+64	+5.8	-1.3	-2.9	+0.7	+1.4
Acc	63%	64%	61%	69%	60%	54%	53%	52%	54%	54%	47%	58%

Purchaser: Price: \$.....

Lot 79**Bauhinia Park M38 U171**

ID: ART23U171 **Birth Date:** 15/09/2023
Registered MBR Bull **Colour:** Black

S: Glenmorgan Thunderbird Man H248
Sire: Bauhinia Park Thunderbird M38
D: Bauhinia Park J93

S: S A V Heritage 6295
Dam: Bauhinia Park H162
D: Bauhinia Park D309

Comments: M38 out of one of our true cow legend families. Fertile and quality as they come.

**Mid July 2025 TransTasman Angus Cattle Evaluation**

	Birth Wt.	200 Day	400 Day	600 Day	Mat. Cow	Milk (kg)	Carcase	EMA	Rib Fat	Rump Fat	Beef Yield	IMF
EBV	+7.2	+58	+105	+138	+139	+13	+76	+3.5	-1.3	-1.3	+1.3	-0.8
Acc	62%	65%	64%	70%	61%	57%	56%	48%	51%	50%	43%	53%

Purchaser: Price: \$.....

Lot 80**Bauhinia Park U125**

ID: ART23U125 **Birth Date:** 30/08/2023
Registered MBR Bull **Colour:** Black

S: Bauhinia Park Harvester N57
Sire: Bauhinia Park Reaction R76
D: Bauhinia Park H167

S: Glenmorgan Harvester Man K502
Dam: Bauhinia Park Miss Harvester R20
D: Bauhinia Park H196

Comments: R76 out of a lovely young K502 cow. K502 was our go to sire of his time. Should have predictability plus.



Lot 74 (left) and Lot 80 (right).

Mid July 2025 TransTasman Angus Cattle Evaluation

	Birth Wt.	200 Day	400 Day	600 Day	Mat. Cow	Milk (kg)	Carcase	EMA	Rib Fat	Rump Fat	Beef Yield	IMF
EBV	+5.8	+46	+90	+123	+116	+16	+66	+7.5	0.0	-0.9	+1.3	+0.2
Acc	59%	61%	60%	67%	58%	52%	51%	49%	51%	51%	43%	54%

Purchaser: Price: \$.....

Lot 81**Bauhinia Park U175**

ID: ART23U175 **Birth Date:** 12/09/2023
Registered MBR Bull **Colour:** Black

S: Bauhinia Park Harvester N57
Sire: Bauhinia Park Reaction R76
D: Bauhinia Park H167

S: Bauhinia Park Niagara N48
Dam: Bauhinia Park R81
D: Bauhinia J311

Comments: R76 out of another really productive Niagara cow. Fertility and carcass combined.



Mid July 2025 TransTasman Angus Cattle Evaluation

	Birth Wt.	200 Day	400 Day	600 Day	Mat. Cow	Milk (kg)	Carcase	EMA	Rib Fat	Rump Fat	Beef Yield	IMF
EBV	+5.2	+52	+100	+131	+122	+15	+70	+6.5	-0.6	-3.0	+1.1	+0.9
Acc	61%	63%	61%	68%	59%	54%	53%	51%	53%	53%	45%	57%

Purchaser: Price: \$.....

Lot 82**Bauhinia Park M38 U151**

ID: ART23U151 **Birth Date:** 15/09/2023
Registered APR Bull **Colour:** Black

S: Glenmorgan Thunderbird Man H248
Sire: Bauhinia Park Thunderbird M38
D: Bauhinia Park J93

S: JMB Traction 292
Dam: Bauhinia Park Zingette P44
D: Bauhinia Miss Zingette K58

Comments: M38 this time out of a cow line stacked with breeding and fertility again.



Mid July 2025 TransTasman Angus Cattle Evaluation

	Birth Wt.	200 Day	400 Day	600 Day	Mat. Cow	Milk (kg)	Carcase	EMA	Rib Fat	Rump Fat	Beef Yield	IMF
EBV	+6.4	+60	+104	+136	+135	+16	+71	+5.1	-1.5	-2.1	+1.1	-0.1
Acc	66%	68%	65%	71%	64%	58%	57%	54%	57%	57%	49%	60%

Purchaser: Price: \$.....

Lot 83**Bauhinia Park M38 U113**

ID: ART23U113 **Birth Date:** 25/08/2023
Registered APR Bull **Colour:** Black

S: Glenmorgan Thunderbird Man H248
Sire: Bauhinia Park Thunderbird M38
D: Bauhinia Park J93

S: XLBeef Traction M60
Dam: Bauhinia Park Usual G132 Q65
D: Glenmorgan Thunderbird Lady G132

Comments: This young sire goes back to a cow we paid \$20k for back when that was a lot of money. M38 is his sire to boot.

Pedigree suggests suitable for use on heifers.

**Mid July 2025 TransTasman Angus Cattle Evaluation**

	Birth Wt.	200 Day	400 Day	600 Day	Mat. Cow	Milk (kg)	Carcase	EMA	Rib Fat	Rump Fat	Beef Yield	IMF
EBV	+6.0	+59	+106	+137	+140	+13	+69	+2.5	-1.8	-2.0	+0.8	0.0
Acc	65%	67%	64%	70%	63%	56%	56%	53%	56%	56%	48%	59%

Purchaser: Price: \$.....

Lot 84**Bauhinia Park GM U179**

ID: ABW23U179 **Birth Date:** 27/08/2023
Registered HBR Bull **Colour:** Black

S: G A R Home Town
Sire: Glenmorgan Hometown Man S305
D: Glenmorgan Big Sky Lady P295

S: Musgrave 316 Exclusive
Dam: Glenmorgan Exclusive Lady S402
D: Glenmorgan Ten X Lady J209

Comments: Slightly different bloodlines here. EMA and IMF are a feature.

Pedigree suggests suitable for use on heifers.

**Mid July 2025 TransTasman Angus Cattle Evaluation**

	Birth Wt.	200 Day	400 Day	600 Day	Mat. Cow	Milk (kg)	Carcase	EMA	Rib Fat	Rump Fat	Beef Yield	IMF
EBV	+3.4	+44	+83	+109	+82	+29	+58	+12.6	-0.8	-0.7	+1.1	+2.7
Acc	81%	82%	80%	81%	78%	74%	69%	69%	68%	69%	59%	74%

Purchaser: Price: \$.....

Lot 85**Bauhinia Park U43**

ID: ART23U43 **Birth Date:** 21/08/2023
Registered MBR Bull **Colour:** Black

S: Dance Emperor 343 J198
Sire: Dance Emperor Q114
D: Dance K292

S: Bauhinia Park Upward L7
Dam: Bauhinia Park Loyola S17
D: Bauhinia Park Loyola P18

Comments: Combines two heifer bull specialist lines for us in Q114 and L7.

Pedigree suggests suitable for use on heifers.

**Mid July 2025 TransTasman Angus Cattle Evaluation**

	Birth Wt.	200 Day	400 Day	600 Day	Mat. Cow	Milk (kg)	Carcase	EMA	Rib Fat	Rump Fat	Beef Yield	IMF
EBV	+3.9	+45	+81	+98	+79	+16	+56	+7.1	-0.6	-1.7	+1.1	+1.1
Acc	63%	65%	62%	69%	61%	55%	54%	54%	55%	56%	48%	59%

Purchaser: Price: \$.....

Lot 86**Bauhinia Park U51**

ID: ART23U51 **Birth Date:** 20/09/2023
Herd Bull **Colour:** Black

S: Brooklana Infinity N23
Sire: Brooklana TM Infinity Q130
D: Millah Murrah Prue M4
S: Millah Murrah Kingdom K35
Dam: Dance Federation J200 Q188
D: Dance Federation J200

Comments: Herd bull. Somehow just missed his registration - out of a very productive MMK35 cow. Pedigree suggests suitable for use on heifers.



Mid July 2025 TransTasman Angus Cattle Evaluation												
	Birth Wt.	200 Day	400 Day	600 Day	Mat. Cow	Milk (kg)	Carcase	EMA	Rib Fat	Rump Fat	Beef Yield	IMF
EBV	-	-	-	-	-	-	-	-	-	-	-	-
Acc	-	-	-	-	-	-	-	-	-	-	-	-

Purchaser: Price: \$.....

Lot 87**Bauhinia Park U146**

ID: ART23U146 **Birth Date:** 10/09/2023
Registered HBR Bull **Colour:** Black

S: Ben Nevis Newsflash N239
Sire: Gilmandyke Newsflash Q101
D: Gilmandyke Eutesca H241
S: VAR Generation 2100
Dam: Brooklana Champagne P66
D: Vermont Champagne D86

Comments: Sire News Flash Q101 featured a lot in 2024 sale. Only two sons this year as unfortunately Q101 hurt himself. Pedigree suggests suitable for use on heifers.

*Pictured below:
 Gilmandyke Newsflash Q101 -
 Sire of Lots 87 and 88.*



Mid July 2025 TransTasman Angus Cattle Evaluation												
	Birth Wt.	200 Day	400 Day	600 Day	Mat. Cow	Milk (kg)	Carcase	EMA	Rib Fat	Rump Fat	Beef Yield	IMF
EBV	+4.6	+49	+84	+112	+91	+15	+61	+8.0	-1.2	-0.1	+1.1	+1.0
Acc	71%	73%	71%	71%	70%	65%	62%	62%	63%	63%	55%	67%

Purchaser: Price: \$.....

Lot 88**Bauhinia Park U210**

ID: ART23U210 **Birth Date:** 2/10/2023
Herd Bull **Colour:** Black

S: Ben Nevis Newsflash N239
Sire: Gilmandyke Newsflash Q101
D: Gilmandyke Eutesca H241
S: Bauhinia Park M38
Dam: Bauhinia Park Q59
D: Bauhinia Park Net Worth K51

Comments: Herd bull - again by the Newsflash Q101 sire. Pedigree suggests suitable for use on heifers.



Mid July 2025 TransTasman Angus Cattle Evaluation												
	Birth Wt.	200 Day	400 Day	600 Day	Mat. Cow	Milk (kg)	Carcase	EMA	Rib Fat	Rump Fat	Beef Yield	IMF
EBV	-	-	-	-	-	-	-	-	-	-	-	-
Acc	-	-	-	-	-	-	-	-	-	-	-	-

Purchaser: Price: \$.....

Lot 89**Bauhinia Park U212**

ID: ART23U212 **Birth Date:** 18/10/2023
Herd Bull **Colour:** Black

S: Glenmorgan Thunderbird Man H248
Sire: Bauhinia Park Thunderbird M38
D: Bauhinia Park J93

S: Glenmorgan Traction L293
Dam: Bauhinia Park P114
D: Bauhinia Park K18

Comments: Last of the M38 sons. Out of a very productive cow line again.
 Pedigree suggests suitable for use on heifers.

*Thank you to Kent Ward
 at KB Consulting
 for your input.*

Mid July 2025 TransTasman Angus Cattle Evaluation

	Birth Wt.	200 Day	400 Day	600 Day	Mat. Cow	Milk (kg)	Carcase	EMA	Rib Fat	Rump Fat	Beef Yield	IMF
EBV	-	-	-	-	-	-	-	-	-	-	-	-
Acc	-	-	-	-	-	-	-	-	-	-	-	-

Purchaser: Price: \$.....

Lot 90**Bauhinia Park Craftsman V4**

ID: ART24V4 **Birth Date:** 20/01/2024
Herd Bull **Colour:** Black

S: Sits Resilient 10208
Sire: Connealy Craftsman
D: Black Cathy of Conanga 8521

S: Matauri Reality 839
Dam: Glenmorgan N135
D: Glenmorgan Traction L414

Comments: Young sire we think a lot of to finish the sale.
 Only 18 mths. Very long with great bone - out of a USA
 sensation AI sire Connealy Craftsman.
 Pedigree suggests suitable for use on heifers.

**Mid July 2025 TransTasman Angus Cattle Evaluation**

	Birth Wt.	200 Day	400 Day	600 Day	Mat. Cow	Milk (kg)	Carcase	EMA	Rib Fat	Rump Fat	Beef Yield	IMF
EBV	-	-	-	-	-	-	-	-	-	-	-	-
Acc	-	-	-	-	-	-	-	-	-	-	-	-

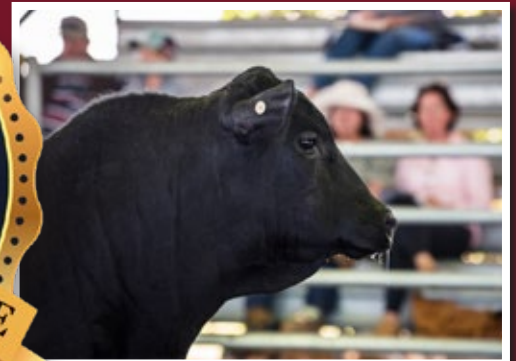
Purchaser: Price: \$.....



2025 Sale Bulls

2024 Bauhinia Park Annual Sale Snaps

A big Thank You to all who came and supported our milestone 20th Anniversary Sale last year!



2024 Bauhinia Park Annual Sale Snaps



Left - Lot 3 Bauhinia Park Target (P/S) (R/F) sold for \$41,000 to Phillip Lamb, Lamb Pastoral Co, Biloela.
(Pictured with Andrew Clarke, Kellco Agencies, Ryan & Rachel Holzwart and Phillip Lamb, Lamb Pastoral Co).
Photo by Sheree Kershaw.



Lot 47 Bauhinia Park GM Powerpoint T227 sold for \$20,000 to Paul & Judy Oates, Emerald. (Pictured with Bindi Nalder, Bauhinia Park).
Photo by Sheree Kershaw.

Left - Volume buyers Trish & Bill Curran, Mentmore Grazing, Pindi Pindi, on behalf of the Zatta Family, alongside a few of their newly purchased sale bulls.
Photo by Sheree Kershaw.

RBV RURAL

Building strong and trusting relationships.



- ✓ Selling agents at the Emerald Saleyards (every Thursday)
- ✓ Paddock sales & marketing advice
- ✓ Stud stock sales & marketing
- ✓ Direct sales to feedlots & processing plants
- ✓ AuctionsPlus assessments – Level 1 Professional Assessors
- ✓ Rural property sales & auctions
- ✓ Emerald Auction Centre – online auctions

Contact

TERRY RAY	0427 821 177
MATT BEARD	0428 765 687
BRYTON VIRGO	0477 318 224
TONY PRENTICE	0417 709 778
LACHIE SPRY	0438 873 493

OFFICE	07 4982 4272
EMAIL	livestock@rbvrural.com
ADDRESS	1/17 Opal Street Emerald

rbvrural.com

Allflex[®]
Livestock Intelligence™

DNA SAMPLING SIMPLIFIED

with the Allflex TSU
(Tissue Sampling Units)

- Highest quality sample method
- Vials fit in standard lab well plate (96 vials)
- Efficient and cost effective
- Available with paired NLIS and management tags



www.allflex.com.au

65
YEARS
AND READY FOR MORE.

NATIONAL VENDOR DECLARATION
(CATTLE) AND WAYBILL

C0720 80808637

This form cannot be used where eligibility for the EU market is required.

Part A To be completed by the owner or person who is responsible for the husbandry of the cattle.

Owner of cattle JR4 RW Holzwart
Property/place where the journey commenced Kensington' 863 Rundie
Access Road Emerald QLD (TOWN/SUBURB) (FULL TRADING NAME) (STATE)

Property Identification Code (PIC) of this property QFEE0036
This MUST be the PIC of the property that the stock is being moved from

Description of cattle		Brands or Earmarks (IF PRESENT OR REQUIRED)
Number	Description (BREED, SEX, E.G. HEREFORD CROSS STEERS)	
45	Charolais Bulls	H2A
45	Angus Bulls	H
9.0	Total	

Use the Attachment Forms for consignments that require more lines to describe the stock. (See Explanatory Notes)

Consigned to RBV Rural
1/17 Opal Street
Destination (if different) of cattle Ag-grow
Emerald QLD (TOWN/SUBURB) (STATE)
Emerald QLD (LOCATION ADDRESS)
Destination PIC (REQ: WA & TAS)
NLIS devices used on these cattle Number of ear tags 9.0 Number of rumen devices
Details of other statutory documents relating to this movement e.g. health statement

DOCUMENT TYPE NUMBER OFFICE OF ISSUE EXPIRY DATE

- 1 Have any of the cattle in this consignment ever in their lives been treated with a hormonal growth promotant (HGP)? (Use a second document for mixed consignments.)
Yes ☐ No ☒
- 2 Have the cattle in this consignment ever in their lives been fed feed containing animal fats?
Yes ☐ No ☒ (See Explanatory Notes)
- 3 Has the owner stated above owned these cattle since their birth?
Yes ☐ No ☒ If No, how long were the cattle obtained or purchased?
(If purchased at different times, tick the box corresponding to the time of the most recent purchase.)
A. Less than 2 months ☐ B. 2-6 months ☐ C. 6-12 months ☐ D. more than 12 months ☒
- 4 In the past 60 days, have any of these cattle been fed by-product stockfeeds?
Yes ☐ No ☒ If Yes, attach a list of the by-product stockfeeds, date when last fed and a copy of an analyst's report if available.

- 5 In the past 6 months have any of these animals been on a property listed on the ERP database or placed under any restrictions because of chemical residues?
Yes ☐ No ☒ If Yes, give details:
- 6 Are any of the cattle in this consignment still within a Withholding Period (WHP) or Export Slaughter Interval (ESI) as set by APVMA or SAFEEMAT, following treatment with any veterinary drug or chemical?
Yes ☒ No ☐ If Yes, give details: (Record additional details in question 9)
Dectomax Injectable 13/08/2025 DATE APPLIED 4.2 WHP ESI (IF SET)
- 7 In the past 60 days, have any of the cattle in this consignment consumed any material that was still within a withholding period when harvested, collected or first grazed?
Yes ☐ No ☒ If Yes, give details:
CHEMICAL PRODUCT DATE APPLIED GRAZING WHP DATE FIRST FED/GRAZED DATE FEEDING/GRAZING CEASED
- 8 In the past 42 days, were any of these cattle
a) grazed in a spray drift risk area; or
b) fed fodders cut from a spray drift risk area? (See Explanatory Notes for definition of spray drift risk area.)
Yes ☐ No ☒ If Yes, Date sprayed: / /20
- 9 Please include any additional information below
eg: vaccination programs, animal health certification, additional declarations, etc.

Declaration

I Ryan Holzwart
FULL NAME FULL ADDRESS
'Kensington' Emerald QLD 4720
ADDRESS CONT
I declare that, I am the owner or the person responsible for the husbandry of the cattle and that all the information in part A of this document is true and correct. I also declare that I have read and understood all the questions that I have answered, that I have read and understood the explanatory notes, and that, while under my control, the cattle were not fed restricted animal material (including meat and bone meal) in breach of State or Territory legislation.

Signature* [Signature] Date* 20/08/2025
*Only the person whose name appears above may sign this declaration, or make amendments which must be initiated.
Tel no. 0447 313 126 Fax no. —
Email. ryanholzwart@outlook.com

Part B To be completed by the person in charge of the cattle while they are being moved.
Completion of this part is optional in SA and VIC.

Movement commenced: 20/08/2025 8:00 (am/pm)
Vehicle registration number(s): 686 GOL
I Ryan Holzwart am the person in charge of the cattle during the movement and declare all the information in Part B is true and correct.
Signature [Signature] Date 20/08/2025 Tel no. 0447 313 126
*When more than one truck is carrying the cattle, other vehicle registration numbers are to be recorded.

This image shows a full page of white paper with horizontal dotted lines. The lines are evenly spaced and run across the width of the page, providing a guide for handwriting or typing. There are no margins, text, or other markings on the page.

Sale Summary

Charolais Bulls

Gross:

Average:

Top:

Angus Bulls

Gross:

Average:

Top:

Sale Totals

Gross:

Average:

**The Holzwart Family of Bauhinia Park Charolais & Angus
would like to thank you for your attendance and we wish
you all the success with your purchases.**

**We hope to see you again next year for our
22nd Annual Bull Sale.**





Lot 1 (P)



Lot 5 (P) (R/F)



Lot 12 (P)



Lot 28 (P) (R/F)



Lot 50 (P)



Lot 52 (P)



Lot 73 (P)



Lot 61 (P)

