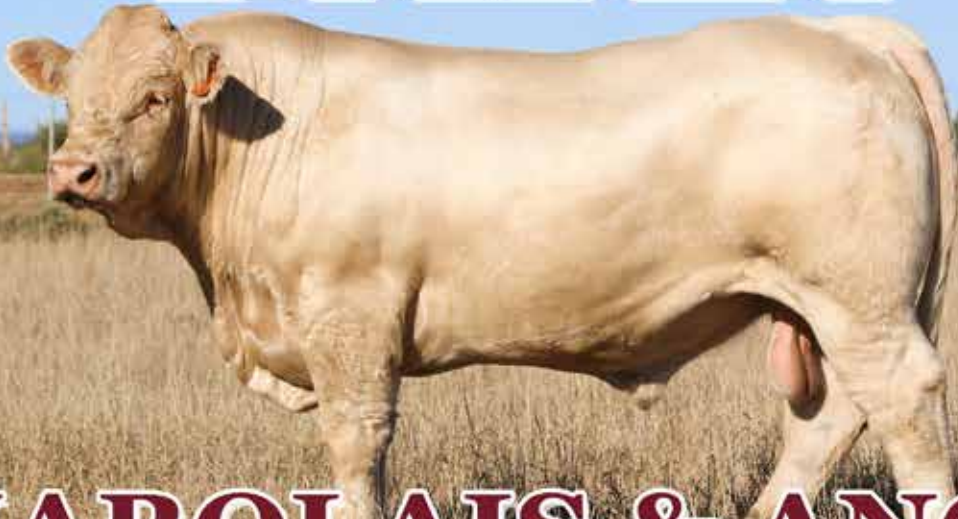


BAUHINIA PARK



CHAROLAIS & ANGUS

13th Annual Bull Sale

10.30am, Wednesday 23rd August 2017

Ag-Grow Bull Selling Complex, Emerald Qld



80 BULLS

40 Charolais - 40 Angus

H2h

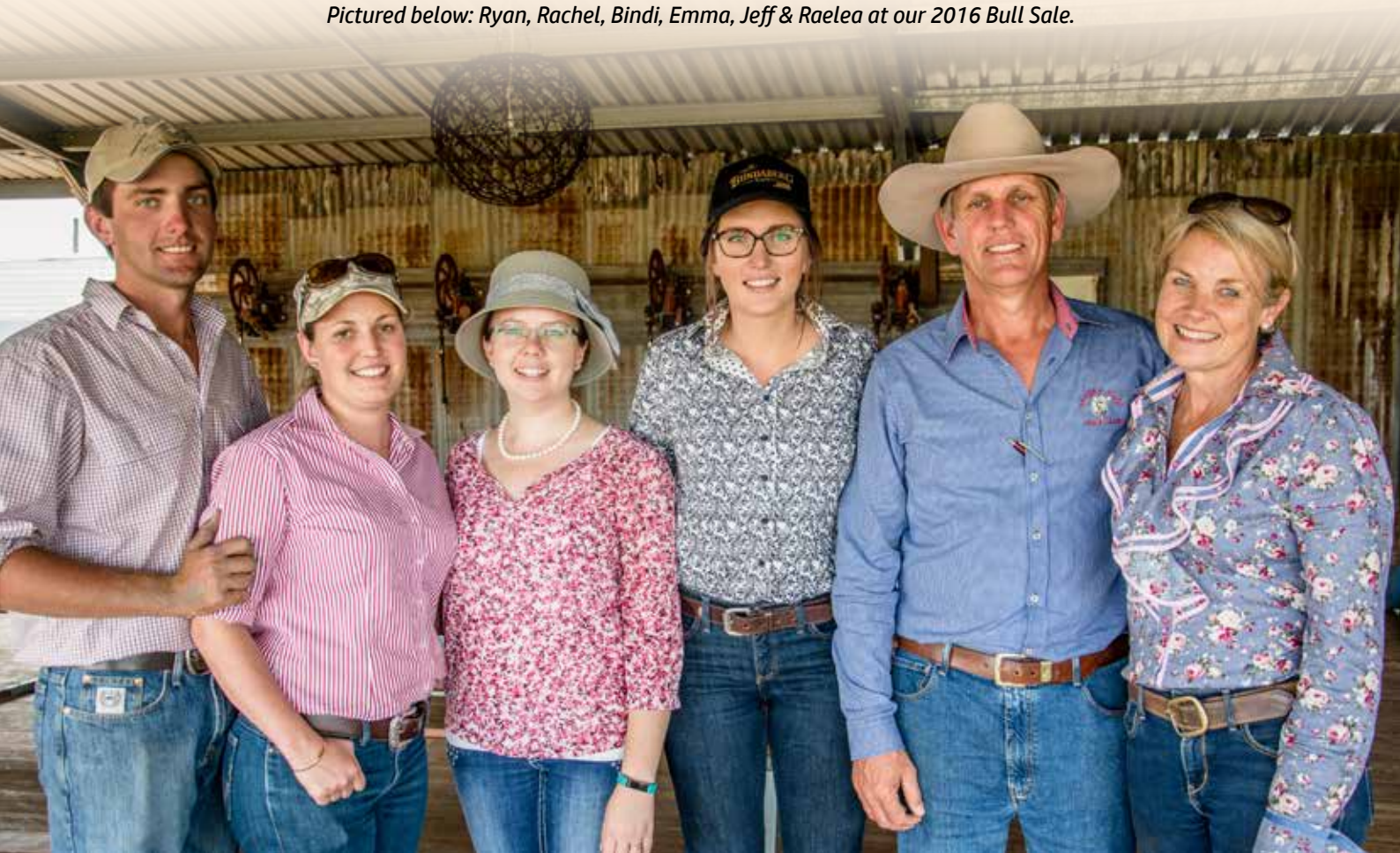
BAUHINIA PARK CHAROLAIS



BAUHINIA PARK ANGUS

Pictured on front cover: Charolais Lot 3, and Angus Future Stud Sire, Bauhinia Park Upward L7.

Pictured below: Ryan, Rachel, Bindi, Emma, Jeff & Raelea at our 2016 Bull Sale.



BAUHINIA PARK CHAROLAIS & ANGUS

13th Annual Bull Sale

10.30am, Wednesday 23rd August 2017

Ag-Grow Bull Selling Complex, Emerald Qld

80 BULLS

40 Charolais - 40 Angus

Bauhinia Park Contacts:

Jeff & Raelea Holzwart

"Grandridge", Yamala via Emerald Qld

PO Box 773, Emerald Qld 4720

Ph: 0429 822 378

bauhinia-park@bigpond.com

Ryan Holzwart

"Kensington", Yamala via Emerald Qld

PO Box 773, Emerald Qld 4720

Ph: 0447 313 126

ryan@bauhiniaparkbulls.com.au

*J-BAS 6 Score
Health Declaration
Provided &
Biosecurity Plan in
place.*

Selling Agents:



Landmark Emerald - Matthew Beard

Ph: (07) 4982 2055 Mob: 0428 765 687

www.bauhiniaparkbulls.com.au

Welcome

A warm welcome to our 2017 Annual Bull Sale.

For those who attended last year, a big welcome back, and thank you in whatever part you played in making last year a special and rewarding day for Bauhinia Park studs. For those who didn't make it last year, a big welcome to the 2017 sale. We hope you enjoy the day, and make sure you enjoy the nibbles before the sale, have a catch up, and enjoy some drinks and a feed afterward on the house.

From a family point, another exciting year unfolded during the past twelve months. Congratulations to Ryan and Rachel who were married in October. Bindi and Anthony have bought their first home, and Emma has moved to Mackay following a career move. A big thank you to all our immediate and extended family who continue to support each other in our family and business endeavours. A special thank you to Bindi whose talent continues to surprise, and who plays a major part in producing the ads you see in the papers, she produces the catalogue, and handles our web page.

For the cattle industry generally, what a period in time we continue to enjoy. Interest rates remain at all time low's, the world still demands protein, the Aussie dollar remains relatively low, and beef prices remain very healthy. Our seasons are still up and down, but I guess we do live in Australia. We pray the good prices continue for a while, and let's all enjoy the ride while it's here.

So how can the bulls you buy help make sure we get those better prices to be had:

- Doing ability with predictable carcass traits – is a major focus with our stud selection. Our cattle are adapted, un-spoiled, and our bulls perform out in the paddock. We retain a focus on softness (not to be confused with over fat), finishing ability, and with higher than average IMF. Our bull's progeny often top the local store sales, and perform well in feedlots. Thank you for our customers who provide us with valuable feedback.

- Weight gain from length and thickness – Our bulls are bred to add value from weaners, feeders, and all the way to bullocks and terminal females. We use physical measures in our young bulls (regular weight gains, with pre-sale fat scans, EMA scans, and IMF scans), and we embrace EBV's as an added tool within our herd. Almost all our stud cattle are breed plan recorded. Knowing the physical performance, together with the generic attributes of our breeders and stud sires used, helps ensure we maintain high standards for our bulls offered.
- Proven over the years – It is around 20 years since we first established our Charolais stud, and based on this experience we have fast tracked our Angus herd started six years ago. We have very few call backs on bulls from faults, and 100% guarantee the bulls we sell. A large portion of our bulls sell to repeat buyers, for which we are proud and say a huge thank you.
- Polled heads – we are increasingly adding polled genetics into our program. Not always easy for the Charolais, but we are getting there. Our Angus bulls are 100% polled.

So again welcome, and if you can find the time to attend, we sincerely thank you and please stay afterward for a free beer, steak sandwich, and a yarn.

Jeff and Raelea, Ryan and Rachel Holzward



Sale Information

Inspection:

Inspection of the bulls is most welcome any time prior to the sale by arrangement with us or the agents. If you can't make the sale day, we encourage you to contact us or the agents and organise to bid via the telephone (phone service is prevalent at the sale ring).

Supplementary Sheets:

All bulls will be scanned prior to the sale by certified scanning technician David Reid for eye muscle area, rump fat, rib fat and intra muscular fat. Bulls will also have a sale weight and scrotal size measurements which will all be printed on supplementary sheets and available on sale day or just prior to the sale on our website.

Guarantee:

We back our bulls 100% and are extremely tough on making sure the bulls are structurally sound and fertile. All bulls will be semen tested, breeding soundness evaluated and are guaranteed breeders. If a problem occurs against the breeding ability of a bull within the first full breeding year of purchase, a replacement animal of comparable value or bull credit for the following sale will be given if required. Please contact us if you have any issues.

Health and Vaccinations:

Sale bulls are vaccinated with:

- 3 day sickness
- 5-in-1
- 3 germ blood

The bulls will be Dectomax injected ready for tick clearance if required.

Biosecurity:

Bauhinia Park Studs are currently operating under a J-BAS 6 score. We are aware of the new industry requirements and have a plan in place. We are willing to meet the needs of purchasers. A health declaration will be provided with the usual NVD on sale day.

Breedplan:

We offer a range of industry tools to help in your bull selection. Supplementary raw performance data (available on sale day) used in conjunction with Breedplan figures and visual appraisal can assist you in your decision making. EBVs are calculated using submitted weights and other available information to form an Estimate Breeding Value incorporating pedigree and performance of relatives and the individual animal.

Delivery:

Free freight will be given to Alpha and Rolleston clearing dips, and can now be cleared at Emerald saleyards as well. We are also happy to assist with delivery in the local area. Please talk to the agents, Jeff or Ryan for delivery assistance or leave instructions at the registration desk at the sale.

Agents Rebate:

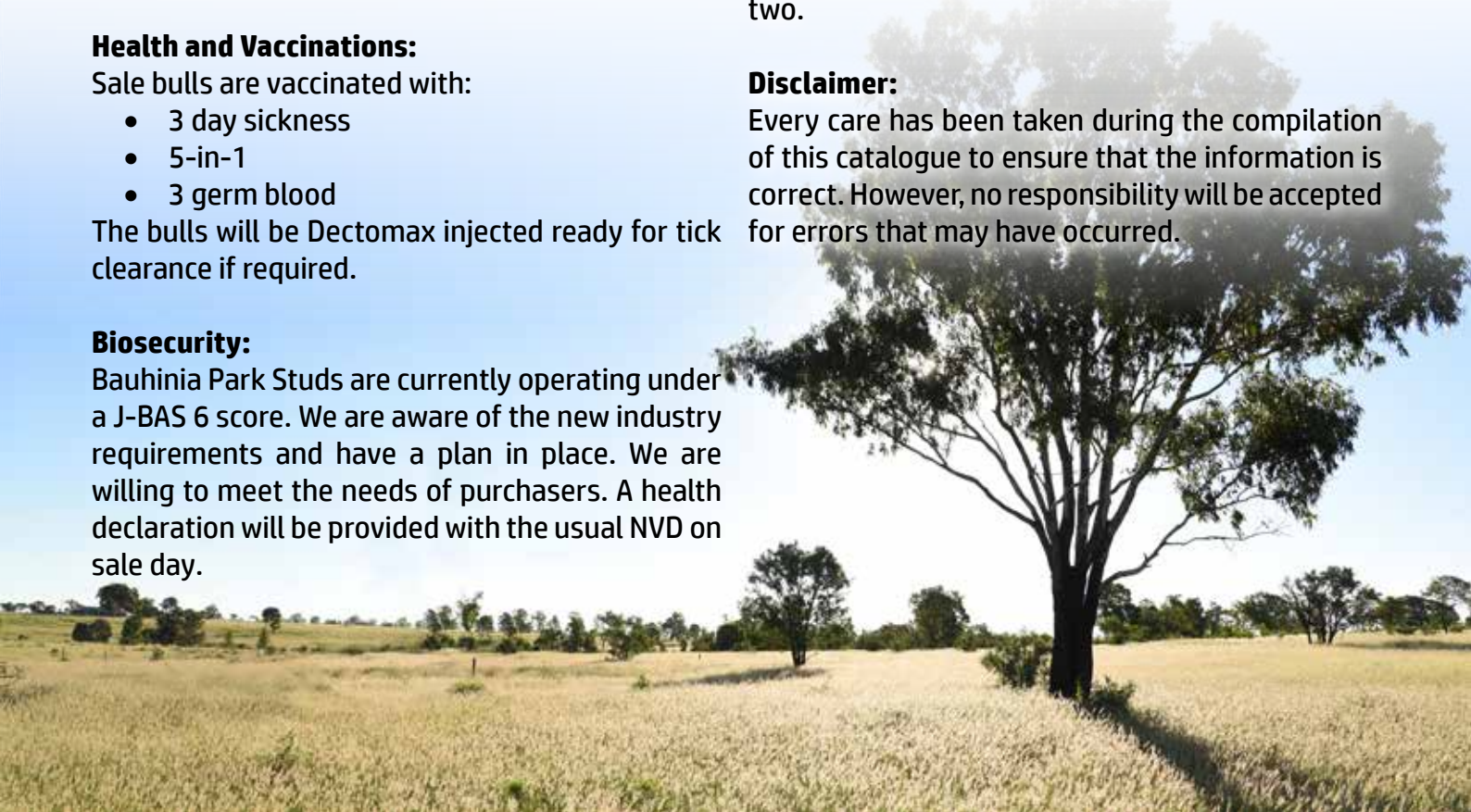
A 4% rebate will be given to outside agents (usual conditions apply).

Refreshments:

We would like to take time to enjoy the sale and spend time with clients and friends, so please join us for complimentary morning tea prior to the sale and a free post-sale lunch, maybe even a beer or two.

Disclaimer:

Every care has been taken during the compilation of this catalogue to ensure that the information is correct. However, no responsibility will be accepted for errors that may have occurred.



Our Year in Review

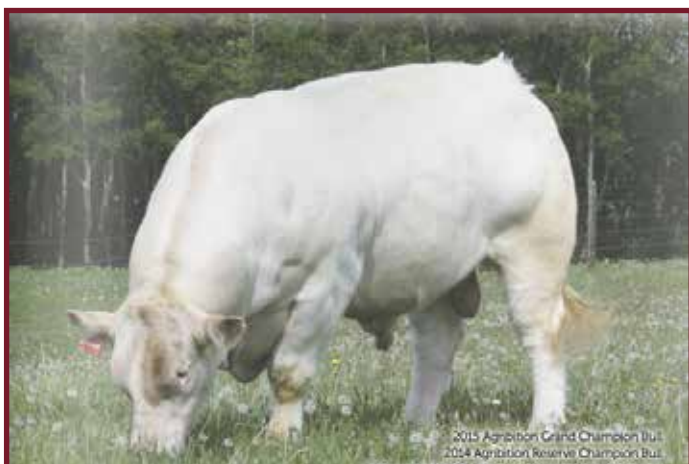
August 2016 - Our 12th Annual Bull Sale.



October 2016 - Ryan & Rachel got married with their ceremony held at 'Grandridge' and their reception at the Ag-Grow Woolshed. It was a beautiful day and a great time was had by all.

October 2016 - Our AI programs began.

SAV International 2020 and SS Niagara were the two main Angus bulls used. While in the Charolais, our exclusive sire Sparrows Seminole (P) and Bauhinia Park Koshi (P). Calves are about to hit the ground and we can't wait!



November 2016 - We secured semen straws of Canadian champion CML Distinction.

Two of our best Donor cows were flushed to Distinction (including Dozer's mother) with a small handful of embryo calves due in November.

January 2017 - We were fortunate enough to acquire some of Fernvale's best old genetics, by purchasing some cows with bull calves at foot and donor dam Betsy Rose (pictured right).



Pictured right: One of our Angus Stud Sires, Bauhinia Park Net Worth H55, posing for a photo.

April 2017 - Thanks to Brady Klan from the Emerald Ag College for inviting Indonesian delegates to view our stud and operation. They loved our cattle and we loved their company!



July 2017 - Ag-Grow Emerald. Thank you to everyone who came and said G'day.

CHAROLAIS BULLS

LOTS 1-40



Charolais breeders at 'Kensington'.

Bauhinia Park Charolais

Bauhinia Park Charolais stud is a family owned and operated business founded by Jeff and Raelea Holzwart in the mid 90's commencing with around 40 cows. The stud has since grown to where we are now joining around 180 top quality females with the resulting young sires sold at our annual bull sale.

Located just 30km East of Emerald in Central Queensland the majority of the Charolais herd are run on our property 'Kensington'. Ryan is a partner in the Charolais herd, and together with his wife Rachel live at Kensington and manage the Charolais stud. A big thank you to them both, they do a wonderful job.

We are all very passionate about breeding the best quality, most consistent Charolais cattle we can. As mentioned in the introduction, the entire herd of Charolais stud cows are performance recorded, which tests us against our peers in the Charolais industry. This, together with actual scanned data for EMA's, IMF's and Fat scores, provides us with valuable data for subsequent decisions for our stud. These actual scans of sale bulls are also available just prior to sale, and will be readily available on sale date.

Progeny from Bauhinia Park bulls have gone on to top many store and fat sales, as well as gaining good feedback when finished in feedlots. We place a lot of emphasis on EMA's and IMF's, as we believe Charolais' place in a herd is to add muscle, weight and yield (EMA's are a good indicator of muscle), without sacrificing desirable carcass traits (which is where IMF plays it's part).

Not resting on our laurels, we also continue to invest in industry leading sires, with last year's investment in Sparrows Seminole, who Ryan had seen progeny in Canada 12 months earlier. Ryan thought he had made one of the most notable change to the Polled Charolais gene pool that Ryan has seen to date. We were fortunate to acquire the sole Australian rights to Seminole's Semen, which was pretty special. The owners of Seminole had not released his semen at home in Canada, as they believe he is such a complete sire that they want people to purchase his sons to obtain his genetics. Clever marketing, and enormous faith in the bull by them. We have calves on the ground, and are very pleased so far.

Foundation Sires

Bauhinia Park W31E



June 2017 Australasian Charolais Group Breedplan					
	Birth Wt.	200 Day	400 Day	600 Day	Milk (kg)
EBV	+1.0	+14	+26	+34	+7
Acc	71%	90%	88%	90%	89%

S: Ayr Nippon
Sire: Ayr Nippon's Archerton
D: Ayr Fitzroy's Ava

S: Ayr Embargo
Dam: FD7 R26E
D: FD7 Birchfield (P)

W31 had a huge influence at Bauhinia Park and has been labelled the king of natural substance and constitution. With extreme length, volume and thickness W31 was one of the most imposing bulls you would see and carried it with ease.

W31 left his stamp on the stud through sons Muscles and Colorado while his daughters are of such quality their progeny are consistently among our best.

W31 carried every feed efficiency gene star known (8 out of 8) when gene-star was a significant test used a few years back. He is the only Charolais we had seen with such complete feed efficiency.

Fernvale X-Rated



June 2017 Australasian Charolais Group Breedplan					
	Birth Wt.	200 Day	400 Day	600 Day	Milk (kg)
EBV	+2.5	+18	+39	+63	+2
Acc	78%	90%	87%	89%	87%

S: Ayr Flinders
Sire: Ayr Flinders Inglewood
D: Ayr Addie's Iris

S: Excalibur FMC423
Dam: Fernvale Rose
D: Fernvale Hi Lilly

Purchased for \$18,000 which at the time seemed like a lot of money but looking back was so cheap.

X-Rated added show stopping looks and high growth rates to his progeny, still leaving them with an ability to carry extra cover. Sons were highly sort after by cattlemen, breaking our stud records through the sale ring. His females have gone on to become some of our best.

Three very influential sons were retained for stud duties; Bronco, Dance and current leading sire Dozer.

Reference Sire

Bauhinia Park Dozer



Sire: S: Ayr Flinders Inglewood
Fernvale X-Rated
D: Fernvale Rose

Dam: S: Ayr Filinders Gypsland
Bauhinia Park X-Cellent
D: FD7 R26E

June 2017 Australasian Charolais Group Breedplan					
	Birth Wt.	200 Day	400 Day	600 Day	Milk (kg)
EBV	+2.7	+25	+46	+69	+7
Acc	64%	90%	86%	85%	77%

Named after his registration number D9, Dozer has been our leading stud sire for a few years now. He was retained as he was the most complete bull we have ever produced and out of our super cow X19.

Dozer is placing his stamp on the stud producing females that are simply awesome, easy keeping, high milking cows. Sons combine plenty of finishing ability with unmatched performance now placing Dozer in the top 1% of the breed for 200, 400 and 600 day weights.

Unfortunately Dozer injured himself at the start of last years joining season. There will be a handful of bulls in next year's sale and we will continue to use Dozer in AI programs going forward, however this will be the last significant run of bulls naturally sired by him.



Son: Bauhinia Park Jag - Top priced bull in our 2015 sale, sold to Racial Flatts Stud.



Son: Bauhinia Park Legacy - Lot 3 and sale feature in this year's sale.



Daughter: Bauhinia Park Prim 6 - Pictured at 2 years old in paddock condition.

Reference Sires

Mamboo Park Colorado



S: Ayr Nippon's Archerton
Sire: Bauhinia Park W31E
D: FD7 R26E

S: Gunnadoo Red Baron R/F
Dam: Mixhill Friesha
D: Moombi Friesia

Colorado was the standout bull of the C drop and retained as one of the strongest W31 sons produced.

Colorado was used at our St George block for a few seasons on mainly Charbray cows with the progeny so impressive and consistent we bought him home to fulfil stud duties.

Sons are long, punchy cross breeding machines that will grow on to be big impressive herd sires.

June 2017 Australasian Charolais Group Breedplan					
	Birth Wt.	200 Day	400 Day	600 Day	Milk (kg)
EBV	+0.9	+8	+18	+24	+1
Acc	54%	76%	71%	71%	60%

Bauhinia Park G144E 'Junior' (P)



S: Bauhinia Park W31E
Sire: Bauhinia Park Muscles
D: Bauhinia Park Cassie

S: Kindara B-Butt R/F
Dam: Bauhinia Park Mindy 4 (P)
D: Bauhinia Park Mindy

G144E is the legacy of household favourite Muscles, hence the nickname 'Junior'.

Outshining peers in his age group, together with a strong polled sires outlook made Junior an easy decision to retain.

Progeny are all quality - clean coated, thick and meaty with ample softness and a large majority polled. Use Junior sons on Bos Indicus based females and the results will be astounding.

June 2017 Australasian Charolais Group Breedplan					
	Birth Wt.	200 Day	400 Day	600 Day	Milk (kg)
EBV	+1.6	+16	+19	+34	+3
Acc	50%	81%	73%	67%	50%

Reference Sires

Bauhinia Park Jasper (P)



S: LT Easy Blend (P)
Sire: LT Cheyenne Blend (P)
D: LT Alli (P)

S: Fernvale X-Rated
Dam: Bauhinia Park Que 5
D: Bauhinia Park Que

Jasper was retained for stud duties as our heifer bull. He has exceeded expectations producing some of our best weaners over the past two years.

Sired by poll impact sire Cheyenne Blend, Jasper offers an outcross pedigree and throws very consistent. Just like the photo suggests, Jasper has matured into a real beef bull with great constitution and sound structure.

Look out for his sons out of Dozer females, they are proving to be a great cross.

June 2017 Australasian Charolais Group Breedplan					
	Birth Wt.	200 Day	400 Day	600 Day	Milk (kg)
EBV	-0.5	+13	+29	+37	+4
Acc	57%	70%	69%	66%	51%

Ayr M.H's Exeter



S: Marquis
Sire: Ayr Marquis's Hoover
D: Ayr Huppe 3rd

S: Lopez
Dam: Ayr Lopez's Elinor
D: Ayr Franco's Elsinore

Red factor full french bull we purchased to introduce some new bloodlines into our herd.

Exeter has a strong sire's head with plenty of bone and meat through his back end. His sons are much the same with the added bonus of having a quiet disposition.

June 2017 Australasian Charolais Group Breedplan					
	Birth Wt.	200 Day	400 Day	600 Day	Milk (kg)
EBV	+2.1	+12	+30	+38	+7
Acc	40%	53%	54%	47%	31%

Lot 1 Bauhinia Park Levi (P)



Registered Bull ID: BAUL4E
Birth Date: 01/08/15 Colour: White

S: LT Cheyenne Blend
Sire: Bauhinia Park Jasper (P)
D: Bauhinia Park Que 5

S: Bauhinia Park Dozer
Dam: Bauhinia Park Crystal 4 H28E
D: Bauhinia Park Crystal C23E

June 2017 Australasian Charolais Group Breedplan					
	Birth Wt.	200 Day	400 Day	600 Day	Milk (kg)
EBV	+1.0	+17	+40	+51	+6
Acc	42%	59%	60%	55%	39%

Comments: Quality polled bull to lead our 2017 draft and the first Jasper son to hit the sale ring. Always a family favourite for his nice temperament and great doing ability. Displays plenty of length and natural thickness making him one of the heaviest at every weigh in.

Top 5% of the breed for 400 day weight, top 10% for 200 and 600 day weight.

Purchaser: Price: \$.....

Lot 2 Bauhinia Park Las Vegas



Registered Bull ID: BAUL50B
Birth Date: 02/09/15 Colour: White

S: Fernvale X-Rated
Sire: Bauhinia Park Dozer
D: Bauhinia Park X-Cellent X19E

S: Mamboo Park S3E
Dam: Bauhinia Park A176A
D: Bauhinia Park Y6

June 2017 Australasian Charolais Group Breedplan					
	Birth Wt.	200 Day	400 Day	600 Day	Milk (kg)
EBV	+1.2	+15	+24	+37	+3
Acc	44%	64%	64%	61%	53%

Comments: Silky smooth Dozer son standing on plenty of bone with a thick, square hindquarter. Oozing softness and eye appeal, he would be ideal for breeding sale topping weaners through to heavy bullocks able to finish easily.

Top 20% of the breed for 200 day weight.

Purchaser: Price: \$.....

Lot 3 Bauhinia Park Legacy



Registered Bull **ID:** BAUL27E
Birth Date: 18/08/15 **Colour:** White

S: Fernvale X-Rated
Sire: Bauhinia Park Dozer
D: Bauhinia Park X-Cellent X19E

S: Bauhinia Park W31E
Dam: Bauhinia Park Queve 5 E22E
D: Bauhinia Park Queve Y28E

June 2017 Australasian Charolais Group Breedplan					
	Birth Wt.	200 Day	400 Day	600 Day	Milk (kg)
EBV	+2.7	+24	+44	+64	+5
Acc	46%	65%	66%	61%	51%

Comments: This impressive young sire is one of Dozer's best. Long as a coal train with a strong muscle pattern, ample softness and weight for age. His dam has bred very well for us; we would consider her one of our best W31 cows.

Top 1% of the breed for 200, 400 and 600 day weight.

Purchaser: Price: \$.....

Lot 4 Bauhinia Park Larsen



Registered Bull **ID:** BAUL37E
Birth Date: 26/08/15 **Colour:** White

S: Fernvale X-Rated
Sire: Bauhinia Park Dozer
D: Bauhinia Park X-Cellent X19E

S: ANC Belgium
Dam: Bauhinia Park Desire 5 E32F
D: Bauhinia Park Desire 2 Y50F

June 2017 Australasian Charolais Group Breedplan					
	Birth Wt.	200 Day	400 Day	600 Day	Milk (kg)
EBV	+2.8	+19	+38	+57	+6
Acc	45%	63%	64%	59%	48%

Comments: This eye catching Dozer son gets better every day and boasts the best weight gain since weaning. Always in good order he combines extra scale and performance with a natural ability to cover.

Top 5% of the breed for 200, 400 and 600 day weight.

Purchaser: Price: \$.....

Lot 5 Bauhinia Park Lancaster (P) (R/F)



Registered Bull **ID:** BAUL111E
Birth Date: 15/10/15 **Colour:** Red Factor

S: PLD Junction 4J
Sire: Ascot Eldorado (P) (R/F)
D: Gobongo Isabella D10E

S: Mamboo Park S3E
Dam: Bauhinia Park Pansy V12E
D: Landmark Pansy

June 2017 Australasian Charolais Group Breedplan					
	Birth Wt.	200 Day	400 Day	600 Day	Milk (kg)
EBV	-	-	-	-	-
Acc	-	-	-	-	-

Comments: Here's a bull for the bullock breeder. Stands on a heap of bone with plenty of length and scale, he will mature into a big impressive bull. Note his age, polled and red factor to boot!

Purchaser: Price: \$.....

Lot 6 Bauhinia Park Lazer



Registered Bull **ID:** BAUL24E
Birth Date: 15/08/15 **Colour:** White

S: Fernvale X-Rated
Sire: Bauhinia Park Dozer
D: Bauhinia Park X-Cellent X19E

S: Bauhinia Park W31E
Dam: Bauhinia Park Prim 2 E20E
D: Ayr Eskimo's Prim

June 2017 Australasian Charolais Group Breedplan					
	Birth Wt.	200 Day	400 Day	600 Day	Milk (kg)
EBV	+1.9	+17	+34	+48	+7
Acc	46%	65%	66%	62%	52%

Comments: Not the prettiest bull in the mob but boy does he have some bone, meat and natural softness. Very mobile with a deep flank, he will add some bonus kilo's to any cross breeding operation.

Top 10% of the breed for 400 and 600 day weight, top 15% for 200 day weight.

Purchaser: Price: \$.....

Lot 7 Bauhinia Park Lobby

Registered Bull **ID:** BAUL60D
Birth Date: 20/09/15 **Colour:** White

Sire: **S:** Ayr Marquis's Hoover
 Ayr M.H's Exeter H424F
D: Ayr Lopez Elinor

Dam: **S:** Fernvale X-Rated
 Bauhinia Park Delta D23C
D: Bauhinia Park Z47B

June 2017 Australasian Charolais Group Breedplan					
	Birth Wt.	200 Day	400 Day	600 Day	Milk (kg)
EBV	+1.7	+13	+29	+40	+6
Acc	38%	56%	57%	51%	36%

Comments: The first of the Exeter sons showing good length and thickness. Quiet nature yet still very active and ready to work. His dam is a great milker, always producing a thumping weaner.

Purchaser: Price: \$.....

Lot 8 Fernvale Larry

Herd Bull **ID:** L45
Birth Date: 12/08/15 **Colour:** White

Sire: **S:** WCR SIR FA Mac 2244
 Fernvale Gold Rush
D: Fernvale Angel

Dam: **S:**
 Fernvale 15
D:

June 2017 Australasian Charolais Group Breedplan					
	Birth Wt.	200 Day	400 Day	600 Day	Milk (kg)
EBV	-	-	-	-	-
Acc	-	-	-	-	-

Comments: First of a good line of bulls purchased from Fernvale. Big, strong bull made for producing heavy bullocks.

Purchaser: Price: \$.....

Lot 9 Fernvale Lusty

Eligible for Reg **ID:** L2
Birth Date: 16/07/15 **Colour:** White

Sire: **S:** Fernvale Prime Mover
 Fernvale Delta Wing
D: Fernvale Rose

Dam: **S:** Excalibur
 Fernvale Kool Kate
D: Bottletree Cynthia

June 2017 Australasian Charolais Group Breedplan					
	Birth Wt.	200 Day	400 Day	600 Day	Milk (kg)
EBV	-	-	-	-	-
Acc	-	-	-	-	-

Comments: Super robust sire with length and strength throughout. Nice rounded body on a free moving structure, this bull will cover some country.

Purchaser: Price: \$.....

Lot 10 Fernvale Lawyer



Herd Bull ID: L10
Birth Date: 08/08/15 Colour: White

S: WCR SIR FA Mac 2244
Sire: Fernvale Gold Rush
D: Fernvale Angel

S:
Dam: Fernvale Maggie
D:

June 2017 Australasian Charolais Group Breedplan					
	Birth Wt.	200 Day	400 Day	600 Day	Milk (kg)
EBV	-	-	-	-	-
Acc	-	-	-	-	-

Comments: This bull oozes softness and weight with a deep flank, heaps of soft muscle and big square top.

Purchaser: Price: \$.....

Lot 11 Bauhinia Park Ledger



Registered Bull ID: BAUL105B
Birth Date: 28/10/15 Colour: White

S: Fernvale X-Rated
Sire: Bauhinia Park Dozer
D: Bauhinia Park X-Cellent X19E

S: Fernvale X-Rated
Dam: Bauhinia Park B109A
D: FD7 R300

June 2017 Australasian Charolais Group Breedplan					
	Birth Wt.	200 Day	400 Day	600 Day	Milk (kg)
EBV	+2.3	+20	+43	+61	+3
Acc	46%	65%	66%	62%	52%

Comments: Strong bodied attractive youngster that covers the paddock with ease. Out of a stunning cow that produces nothing but quality and sired by Dozer, how can you go wrong.

Top 5% of the breed for 200, 400 and 600 day weight.

Purchaser: Price: \$.....

Lot 12 Fernvale Lorrie

Herd Bull ID: L1
 Birth Date: 01/08/15 Colour: White

S: TR Red Smoke
 Sire: Fernvale George
 D: Fernvale Angel

S:
 Dam: Fernvale 87
 D:

June 2017 Australasian Charolais Group Breedplan					
	Birth Wt.	200 Day	400 Day	600 Day	Milk (kg)
EBV	-	-	-	-	-
Acc	-	-	-	-	-

Comments: Easy doing, no fuss type that is always in great condition with a slick, shiny coat.

Lot 13 Fernvale Lord

Herd Bull ID: L50
 Birth Date: 28/10/15 Colour: White

S: TR Red Smoke
 Sire: Fernvale George
 D: Fernvale Angel

S:
 Dam: Fernvale Jan Can
 D:

June 2017 Australasian Charolais Group Breedplan					
	Birth Wt.	200 Day	400 Day	600 Day	Milk (kg)
EBV	-	-	-	-	-
Acc	-	-	-	-	-

Comments: Note his age, very long with extra bone and scale. Thick through the hindquarter.

Purchaser: Price: \$.....

Purchaser: Price: \$.....

Lot 14 Fernvale Leader

Eligible for Reg ID: L42
 Birth Date: 01/10/15 Colour: White

S: WCR SIR FA Mac 2244
 Sire: Fernvale Gold Rush
 D: Fernvale Angel

S: Fernvale Action Station
 Dam: Fernvale Della Royal
 D: Blawey Royal Blue

June 2017 Australasian Charolais Group Breedplan					
	Birth Wt.	200 Day	400 Day	600 Day	Milk (kg)
EBV	-	-	-	-	-
Acc	-	-	-	-	-

Comments: Quality young bull with a good sires head and outlook. Very mobile with ample length, depth, thickness and soft easy fleshing ability.

Purchaser: Price: \$.....

Lot 15 Bauhinia Park Lynx (P)

Registered Bull **ID:** BAUL75E
Birth Date: 28/08/15 **Colour:** White

S: Harvie Jager
Sire: Branch View Forged from Steel (P) (R/F)
D: Branch View Xquisite

S: Linkletter L82E
Dam: Jackson Carmen C29E
D: Amberley Willow W29E

June 2017 Australasian Charolais Group Breedplan					
	Birth Wt.	200 Day	400 Day	600 Day	Milk (kg)
EBV	0.4	+7	+18	+18	+5
Acc	57%	59%	61%	56%	42%

Comments: Double polled free moving bull with extra growth and scale.

Lot 16 Bauhinia Park Luke (R/F)

Registered Bull **ID:** BAUL76E
Birth Date: 30/08/15 **Colour:** Red Factor

S: Harvie Jager
Sire: Branch View Forged from Steel (P) (R/F)
D: Branch View Xquisite

S: Linkletter L82E
Dam: Jackson Cleopatra C43E
D: Rosedale Nelle Y43

June 2017 Australasian Charolais Group Breedplan					
	Birth Wt.	200 Day	400 Day	600 Day	Milk (kg)
EBV	0.1	+9	+22	+26	+5
Acc	54%	58%	60%	55%	41%

Comments: The Forged sons proved popular at last year's sale and we expect this bloke to be no different. Looked good since a calf.

Purchaser: Price: \$.....

Purchaser: Price: \$.....

Lot 17 Bauhinia Park Lifesaver (P) (AI)

Registered Bull **ID:** BAUL17C
Birth Date: 10/08/15 **Colour:** White

S: Keys Specialist (P)
Sire: Keys All State (P)
D: Miss Key Meg (P)

S: Fernvale X-Rated
Dam: Bauhinia Park Dolly D8B
D: Bauhinia Park A132

June 2017 Australasian Charolais Group Breedplan					
	Birth Wt.	200 Day	400 Day	600 Day	Milk (kg)
EBV	0.4	+11	+26	+30	+2
Acc	54%	62%	63%	59%	41%

Comments: Clean coated poll bull with a strong top line and plenty of length. Has been a consistent performer since weaning.

Lot 18 Bauhinia Park Liberate (AI)

Registered Bull **ID:** BAUL16B
Birth Date: 10/08/15 **Colour:** White

S: Keys Specialist (P)
Sire: Keys All State (P)
D: Miss Key Meg (P)

S: Ayr Grovedale's Indy
Dam: Bauhinia Park Dolly C54A
D: Bauhinia Park Z169

June 2017 Australasian Charolais Group Breedplan					
	Birth Wt.	200 Day	400 Day	600 Day	Milk (kg)
EBV	0.2	+8	+15	+15	+2
Acc	52%	60%	62%	57%	39%

Comments: Long and ready to work. Out of a good big cow who is always one of the first to calve with a 365 day calving interval.

Purchaser: Price: \$.....

Purchaser: Price: \$.....

Lot 19 Bauhinia Park Layman (P)



Registered Bull ID: BAUL7C
Birth Date: 02/08/15 Colour: White

S: LT Cheyenne Blend (P)
Sire: Bauhinia Park Jasper (P)
D: Bauhinia Park Que 5

S: Bauhinia Park Dozer
Dam: Bauhinia Park H117B
D: Bauhinia Park A124

June 2017 Australasian Charolais Group Breedplan					
	Birth Wt.	200 Day	400 Day	600 Day	Milk (kg)
EBV	0.5	+14	+33	+42	+6
Acc	43%	60%	61%	56%	39%

Comments: The Jasper/Dozer cross is working well for us. Clean polled head with a beautiful temperament. Displays great constitution with a heavy muscle pattern in a smooth, fault free package.

Top 20% of the breed for 400 and 600 day weight.

Purchaser: Price: \$.....

Lot 20 Bauhinia Park Lancelot (P)

Registered Bull ID: BAUL34C
Birth Date: 25/08/15 Colour: White

S: Airlie A766E (P) (R/F)
Sire: Bauhinia Park Eclipse (P) (R/F)
D: Bauhinia Park A124

S: LT Cheyenne Blend (P)
Dam: Bauhinia Park Elise 2 (P)
D: Bauhinia Park W25E

June 2017 Australasian Charolais Group Breedplan					
	Birth Wt.	200 Day	400 Day	600 Day	Milk (kg)
EBV	0.2	+13	+30	+35	+5
Acc	41%	57%	59%	54%	38%

Comments: Strong polled genetics on both sides of the pedigree. Well rounded bull that holds his shape really well. Eager and ready to work.



*Pictured: Bauhinia Park Eclipse (P).
Sire of Lot 20, 23 and 24.*

Purchaser: Price: \$.....

Lot 21 Bauhinia Park Larder



Registered Bull **ID:** BAUL48E
Birth Date: 15/09/15 **Colour:** Cream

Sire: **S:** Bauhinia Park Muscles
Bauhinia Park G144E (P)
D: Bauhinia Park Mindy 4 (P)

Dam: **S:** Bauhinia Park Dozer
Bauhinia Park Carlton G72E
D: Moongool Carlton 4 (P)

June 2017 Australasian Charolais Group Breedplan					
	Birth Wt.	200 Day	400 Day	600 Day	Milk (kg)
EBV	1.2	+13	+18	+31	+4
Acc	40%	61%	62%	57%	37%

Comments: This robust bull displays an awesome combination of muscle, softness and finishing ability with a silky smooth skin type. The Junior G144 sons topped last year's sale selling to \$19,000.

Purchaser: Price: \$.....

Lot 22 Bauhinia Park Leader



Registered Bull **ID:** BAUL36B
Birth Date: 01/09/15 **Colour:** White

Sire: **S:** Ayr Marquis's Hoover
Ayr M.H's Exeter H424F
D: Ayr Lopez Elinor

Dam: **S:** Fernvale X-Rated
Bauhinia Park D144A
D: Bauhinia Park Z913

June 2017 Australasian Charolais Group Breedplan					
	Birth Wt.	200 Day	400 Day	600 Day	Milk (kg)
EBV	+1.1	+8	+22	+28	+9
Acc	36%	55%	57%	50%	35%

Comments: Quality youngster with the same square shape as his sire. Out of an extremely fertile cow that has calved inside of 12 months all through her breeding years and produced sons selling to \$10,000.

Purchaser: Price: \$.....

Lot 23 Bauhinia Park Larrikan

Registered Bull **ID:** BAUL32C
Birth Date: 20/08/15 **Colour:** White

Sire: **S:** Airlie A766E (P) (R/F)
 Bauhinia Park Eclipse (P) (R/F)
D: Bauhinia Park A124

Dam: **S:** Fernvale Black Adder
 Bauhinia Park Desire 8 H38E
D: Bauhinia Park Desire A2E

June 2017 Australasian Charolais Group Breedplan					
	Birth Wt.	200 Day	400 Day	600 Day	Milk (kg)
EBV	1.0	+8	+23	+24	+4
Acc	39%	57%	59%	53%	39%

Comments: A heifer's first calf showing good length, thickness and plenty of shape on a moderate frame.

Lot 24 Bauhinia Park Limit

Registered Bull **ID:** BAUL22B
Birth Date: 16/08/15 **Colour:** White

Sire: **S:** Airlie A766E (P) (R/F)
 Bauhinia Park Eclipse (P) (R/F)
D: Bauhinia Park A124

Dam: **S:** Moongool Dynamite (P)
 Bauhinia Park Dolly 2 H31C
D: Bauhinia Park Dolly D8

June 2017 Australasian Charolais Group Breedplan					
	Birth Wt.	200 Day	400 Day	600 Day	Milk (kg)
EBV	1.0	+8	+25	+28	+5
Acc	40%	56%	59%	52%	37%

Comments: Will produce good weaners. Quiet and ready to work.

Purchaser: Price: \$.....

Purchaser: Price: \$.....

Lot 25 Fernvale Lofty (P/S)

Herd Bull **ID:** L110
Birth Date: 01/08/15 **Colour:** White

Sire: **S:** Fernvale Prime Mover
 Fernvale Delta Wing
D: Fernvale Rose

Dam: **S:** Fernvale Uphill
 Fernvale Ellie Rose (P)
D: Fernvale Bergundy Rose (P)

June 2017 Australasian Charolais Group Breedplan					
	Birth Wt.	200 Day	400 Day	600 Day	Milk (kg)
EBV	-	-	-	-	-
Acc	-	-	-	-	-

Comments: Polled with small scurs, clean coated with a good nature and plenty of character.

Lot 26 Bauhinia Park Lockie (R/F)

Herd Bull **ID:** L23
Birth Date: 02/10/15 **Colour:** Red Factor

Sire: **S:** Ayr Marquis's Hoover
 Ayr M.H's Exeter H424F
D: Ayr Lopez Elinor

Dam: **S:** Moongool Voodoo
 Kandanga Valley A76
D: Kandanga Valley S301

June 2017 Australasian Charolais Group Breedplan					
	Birth Wt.	200 Day	400 Day	600 Day	Milk (kg)
EBV	-	-	-	-	-
Acc	-	-	-	-	-

Comments: Red Factor with extra length, good eye muscle and a big thick hindquarter.

Purchaser: Price: \$.....

Purchaser: Price: \$.....

Lot 27 Bauhinia Park Lecco (R/F)

Registered Bull **ID:** BAUL116B
Birth Date: 05/12/15 **Colour:** Red Factor

Sire: **S:** Fernvale X-Rated
 Bauhinia Park Dozer
D: Bauhinia Park X-Cellent X19E

Dam: **S:** Mamboo Park Colorado
 Bauhinia Park Chocolate (R/F) G165
D: FD7 V142

June 2017 Australasian Charolais Group Breedplan					
	Birth Wt.	200 Day	400 Day	600 Day	Milk (kg)
EBV	+1.4	+14	+29	+43	+4
Acc	43%	62%	62%	59%	47%

Comments: 7/8 Charolais, 1/8 Charbray. Note his age, quality youngster with ample bone and meat.

Top 20% of the breed for 600 day weight.

Purchaser: Price: \$.....

Lot 28 Bauhinia Park Lucky

Registered Bull **ID:** BAUL73E
Birth Date: 22/10/15 **Colour:** White

Sire: **S:** Ayr Marquis's Hoover
 Ayr M.H's Exeter H424F
D: Ayr Lopez Elinor

Dam: **S:** Fernvale X-Rated
 Bauhinia Park Flame 3 C122E
D: Boongatti Flame 7

June 2017 Australasian Charolais Group Breedplan					
	Birth Wt.	200 Day	400 Day	600 Day	Milk (kg)
EBV	+1.6	+7	+20	+26	+3
Acc	39%	56%	58%	53%	36%

Comments: Powerfully built with length of body and sirey head.

Purchaser: Price: \$.....

Lot 29 Bauhinia Park Legend

Registered Bull **ID:** BAUL84E
Birth Date: 16/11/15 **Colour:** White

Sire: **S:** Ayr Marquis's Hoover
 Ayr M.H's Exeter H424F
D: Ayr Lopez Elinor

Dam: **S:** Fernvale X-Rated
 Bauhinia Park Seniorita 2 D58E
D: Bauhinia Park Seniorita A44E

June 2017 Australasian Charolais Group Breedplan					
	Birth Wt.	200 Day	400 Day	600 Day	Milk (kg)
EBV	+2.3	+14	+33	+46	+5
Acc	38%	55%	57%	51%	35%

Comments: Nicely fleshed young bull standing on plenty of bone. His dam has bred some very good progeny.

Top 20% of the breed for 400 and 600 day weight.

Purchaser: Price: \$.....

Lot 30 Bauhinia Park Legal

Registered Bull **ID:** BAUL94E
Birth Date: 15/10/15 **Colour:** White

S: Fernvale X-Rated
Sire: Bauhinia Park Dozer
D: Bauhinia Park X-Cellent X19E

S: Fernvale Black Adder
Dam: Bauhinia Park Laura 5 G135E
D: Bauhinia Park Laura 2 C46F

June 2017 Australasian Charolais Group Breedplan					
	Birth Wt.	200 Day	400 Day	600 Day	Milk (kg)
EBV	+1.5	+16	+34	+46	+7
Acc	46%	64%	64%	61%	48%

Comments: Another well rounded, active young bull with a heap of natural constitution.

Top 15% of the breed for 400 and 600 day weight, top 20% for 200 day weight.

Purchaser: Price: \$.....

Lot 31 Bauhinia Park Maverick

Registered Bull **ID:** BAUM4E
Birth Date: 02/01/16 **Colour:** White

S: Fernvale X-Rated
Sire: Bauhinia Park Dozer
D: Bauhinia Park X-Cellent X19E

S: Fernvale X-Rated
Dam: Bauhinia Park Rhonda 2 B121E
D: Blontekoe Rhonda

June 2017 Australasian Charolais Group Breedplan					
	Birth Wt.	200 Day	400 Day	600 Day	Milk (kg)
EBV	+2.0	+18	+36	+56	+4
Acc	43%	57%	56%	55%	53%

Comments: Note his age, the start of a high quality run of 18/19 month olds. Quality young sire that is all class.

Top 5% of the breed for 600 day weight, top 10% for 200 and 400 day weight, top 5% for 600 day weight.

Purchaser: Price: \$.....

Lot 32 Bauhinia Park Mason

Registered Bull **ID:** BAUM8E
Birth Date: 12/01/16 **Colour:** White

S: Fernvale X-Rated
Sire: Bauhinia Park Dozer
D: Bauhinia Park X-Cellent X19E

S: Bauhinia Park W31E
Dam: Bauhinia Park Frenchie 4 D57E
D: Bauhinia Park Frenchie 2 V6E

June 2017 Australasian Charolais Group Breedplan					
	Birth Wt.	200 Day	400 Day	600 Day	Milk (kg)
EBV	+2.0	+19	+34	+50	+4
Acc	44%	62%	58%	57%	53%

Comments: Don't overlook this young Dozer son. One of the best bulls in the draft. Great weight for age, length and neck extension, depth and thickness. Out of one of our favourite old cow lines.

Top 10% of the breed for 200, 400 and 600 day weight.

Lot 33 Bauhinia Park Lawrence



Registered Bull **ID:** BAUL102B
Birth Date: 15/11/15 **Colour:** White

S: Bauhinia Park W31E
Sire: Mamboo Park Colorado
D: Mixhill Fresia

S: Bauhinia Park Dozer
Dam: Bauhinia Park H9
D: Bauhinia Park Z1

June 2017 Australasian Charolais Group Breedplan					
	Birth Wt.	200 Day	400 Day	600 Day	Milk (kg)
EBV	+1.0	+10	+25	+34	+3
Acc	40%	59%	60%	56%	40%

Comments: Combines some of our best genetics - sired by Colorado out of a Dozer female. Another quality young bull with all round performance. Great length, bone and carcass attributes.

Purchaser: Price: \$.....

Lot 34 Bauhinia Park Lewis

Registered Bull **ID:** BAUL104E
Birth Date: 20/11/15 **Colour:** White

S: Bauhinia Park W31E
Sire: Mamboo Park Colorado
D: Mixhill Fresia

S: Bauhinia Park Muscles
Dam: Bauhinia Park Frenchie 6 H132E
D: Bauhinia Park Frenchie 3

June 2017 Australasian Charolais Group Breedplan					
	Birth Wt.	200 Day	400 Day	600 Day	Milk (kg)
EBV	+1.0	+10	+18	+26	+2
Acc	40%	59%	60%	56%	40%

Comments: Similiar to the previous lot, heaps of carcass ideal for cross breeding.

Lot 35 Gleanlea Marvel (P)

Registered Bull **ID:** GLEM5E
Birth Date: 19/01/16 **Colour:** White

S: LT Rio Bravo
Sire: Rangan Park Rio Bravo (P)
D: Palgrove Showgirl (P)

S: Violet Hills Winton
Dam: Glenlea Charol 35th B45E
D: Glenlea Caarol

June 2017 Australasian Charolais Group Breedplan					
	Birth Wt.	200 Day	400 Day	600 Day	Milk (kg)
EBV	-1.4	+15	+30	+39	+11
Acc	68%	57%	57%	59%	52%

Comments: Selected as the best weaner and purchased alongside his mother from the Glenlea dispersal. Outcross pedigree with growth, volume and a good poll head.

Top 20% of the breed for 200 and 400 day weight.

Purchaser: Price: \$..... Purchaser: Price: \$.....

Lot 36 Bauhinia Park Lagan

Registered Bull **ID:** BAUL82E
Birth Date: 06/10/15 **Colour:** White

Sire: **S:** LT Cheyenne Blend (P)
 Bauhinia Park Jasper (P)
D: Bauhinia Park Que 5

Dam: **S:** Moongool E482 (P)
 Bauhinia Park Natalie 4 (P)
D: Bauhinia Park Natalie 2

June 2017 Australasian Charolais Group Breedplan					
	Birth Wt.	200 Day	400 Day	600 Day	Milk (kg)
EBV	+0.4	+10	+20	+26	+4
Acc	43%	58%	59%	54%	35%

Comments: Early maturing meat machine with plenty of finish.

Lot 37 Bauhinia Park Makka

Registered Bull **ID:** BAUM9F
Birth Date: 20/01/16 **Colour:** White

Sire: **S:** Ayr Marquis's Hoover
 Ayr M.H's Exeter H424F
D: Ayr Lopez Elinor

Dam: **S:** AYR Inca's Eastwood
 Bauhinia Park Honor C18F
D: Bauhinia Park X11F

June 2017 Australasian Charolais Group Breedplan					
	Birth Wt.	200 Day	400 Day	600 Day	Milk (kg)
EBV	1.5	+12	+22	+23	+2
Acc	35%	51%	47%	46%	36%

Comments: Extra bone and scale in this full french youngster.

Purchaser: Price: \$.....

Purchaser: Price: \$.....

Lot 38 Bauhinia Park Milo

Herd Bull **ID:** M2
Birth Date: 25/01/16 **Colour:** White

Sire: **S:** Noller Bonzer
 Crathes Fernando (P)
D: Noller Irene

Dam: **S:** Park Lyon Charm (R/F)
 Branch View Substance G53E
D: Bunya Vale Substance

June 2017 Australasian Charolais Group Breedplan					
	Birth Wt.	200 Day	400 Day	600 Day	Milk (kg)
EBV	-	-	-	-	-
Acc	-	-	-	-	-

Comments: Tough start from our St George property, he has done very well. Thickset meaty type with a good temperament.

Lot 39 Glenlea Jimmy M7 (R/F)

Registered Bull **ID:** GLEM7E
Birth Date: 16/02/16 **Colour:** Red Factor

Sire: **S:** LT Western Edge (P)
 Glenlea Jimmy (P) (R/F)
D: Gobongo Isabella D86E (P) (R/F)

Dam: **S:** TR Red Smoke (P)
 Mullum Fancy 2 (R/F)
D: Palgrove Fancy

June 2017 Australasian Charolais Group Breedplan					
	Birth Wt.	200 Day	400 Day	600 Day	Milk (kg)
EBV	+0.4	+14	+29	+33	+11
Acc	65%	47%	47%	49%	38%

Comments: Stylish red factor youngster that is very hard to fault. Goes back to Red Smoke who's progeny have worked well in our environment.

Purchaser: Price: \$.....

Purchaser: Price: \$.....

Lot 40 Bauhinia Park M3

Herd Bull ID: M3
Birth Date: 28/01/16 Colour: White

S: Bauhinia Park Muscles
Sire: Bauhinia Park G144E (P)
D: Bauhinia Park Mindy 4

S: DSK Edge to the Top
Dam: Branch View Wendy G45E
D: Branch View Wendy

June 2017 Australasian Charolais Group Breedplan					
	Birth Wt.	200 Day	400 Day	600 Day	Milk (kg)
EBV	-	-	-	-	-
Acc	-	-	-	-	-

Comments: Smooth young bull with length and a good nature.

Purchaser: Price: \$.....



2017 Emerald Show - Junior Champion Females
Bauhinia Park Anastasia with handler Lucy Klan (above)
and Palgrove Clara 48 (acquired as a future donor dam)
with handler Chloe Davey (below).



Emerald

**OUR LOCAL TEAM
WANT YOUR BUSINESS**

How can we help?

Livestock Marketing	Prompt and guaranteed proceeds, livestock finance
Rural Property Marketing	Experience, proven successful sales
Insurance	Rural & Commercial cover, Flood cover
Animal Health	Feed supplements, parasite treatments, specialist advice
Animal Management	Cattle NLIS tags and ear tags, crushes & branding cradles, portable yards
Fencing	Gates, wire, posts, concrete powder
Produce	Horses, cattle, pigs, dogs, cats
Ag Chemical	Competitive price, delivered to you, extensive range
Seed	Knowledge, variety, grower support
Fertilizer	Bulk deliveries, custom blends, service
Specialized Products	Linsell Hoists, Poly Tanks & Troughs, we can get it!

Mick Matthew	Branch Manager, Ag Chem, Seed & Fertiliser Sales	0409 837 945
Matt Beard	Livestock and Rural Property Sales	0428 765 687
Terry Ray	Livestock / Insurance Rural Property Sales	0427 821 177
Bryton Virgo	Livestock	0477 318 224
Kylie Lang	Merchandise Manager	0428 744 978
Angie Innes	Merchandise Sales	0447 769 152
Karla Hicks	Merchandise Sales	07 4982 2055
Justin Howard	Ag Chem, Seed & Fert Sales	0437 279 155

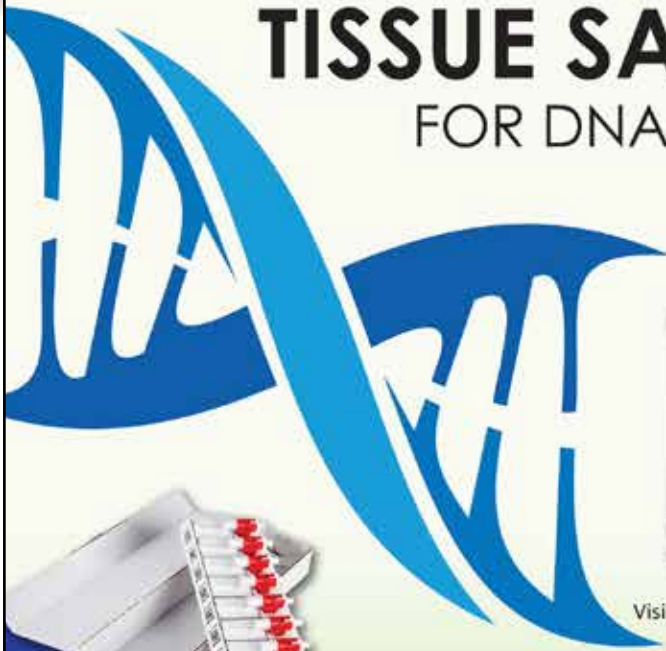
CALL OUR OFFICE ON 4982 2055
Cnr Capricorn Highway & Daniels St, Emerald

landmark.com.au

LANDMARK

TISSUE SAMPLING UNITS

FOR DNA OR SEROLOGY TESTING



Visible Sample



Tube, Loading Apparatus and Cutter



TSU Applicator



Box of 10



TSU with matching NLIS tags



TSU with matching Visual tags
(Large or maxi size options)



TSU with matching NLIS and Visual tags
(Large or maxi size options)

Fast, high performance sample collection

Samples can be collected in seconds with minimal animal restraint. A single-squeeze motion collects a sample with minimum distress to the animal.

Clean, uncontaminated sampling

The genetic material is sealed in a specially designed preservative.

Minimise retesting

Tissue samples contain a large quantity of high quality DNA for genetic analysis yielding excellent lab results.

Sample Integrity

The TSU is fully sealed and positively identified with both a 2D barcode and ID panel. The TSU can be paired to matching NLIS and management tags, creating an absolute sample to animal linkage.

PACKAGING OPTIONS



For further information on Tissue Sampling Units, including a list of laboratories offering storage & testing services, please contact our friendly Customer Service Team on 1300 138 247.



Identify the Difference

The Bauhinia Park Influence



The Hicks family, 'Mulgrave' Barcaldine, took out the aggregate trophy at the Barcaldine show with their Champion pen of Bullocks, Champion pen of Steers and the Supreme Cattle Section Exhibit - Proudly sired by Bauhinia Park bulls.



At the Emerald Weaner & Feeder Ag-Grow Sale July 2017, the Pukallus Family of Wyntoon Partnership, 'Wyntoon' Gindie, sold Charbray steers to 340.2c/kg and weighing 333kg straight off mum to return \$1,135/head - Proudly sired by Bauhinia Park bulls.



Mark Davie, Kelly Newton and family, 'Greenlake Station' Rossmoya, sold a line of 756 young coastal bred weaners through the CQLX Gracemere saleyards on the 16th June 2017 achieving great results. A good portion of these were sired by both Bauhinia Park Angus and Charolais bulls. Lines of note included:

- Angus cross Steers 406c/kg, weighing 223kg to return \$907/head.
- Charolais cross Steers 426c/kg, weighing 196kg to return \$838/head.
- Angus cross heifers 336c/kg, weighing 214kg to return \$720/head.

We're all looking for premium grades. Again this year, we recently shipped a deck and a half of our own paddock assist milk and two teeth ox and heavy heifers to Tey's Lakes Creek. Of the 31 consigned, 29 graded MSA. We consistently use our own feedback and that of our bull buyers to assist in genetic selection.



Bauhinia Park weaners in the yards at 'Kensington'.

ANGUS BULLS

LOTS 41-80



Jeff & Raelea walking Angus stud cows back to their paddock at 'Grandridge'.

Bauhinia Park Angus

Welcome to the Angus section of our sale.

Bauhinia Park stud has invested a lot of time and money in our Angus program, via AI programs, Embryo programs and acquiring top line genetics. For selection of Genetics, there is nothing like seeing for yourself. Ryan visited Canada in 2014, and Jeff was lucky enough to visit USA in 2016. We inspected many herds and took note of the lead genetics being used that made a significant difference to these herds. Depth of breeding is so important in establishing a herd that will breed consistent, value adding bulls for our commercial customers.

Our criteria is again pretty simple for our Angus bulls. Breed them for CQ conditions, use the best genetics we can find, and make sure they fit cattleman's needs, being:

- *Weight for age.*
- *Carcass qualities supported by EBV's and feedback performance.*
- *Fertility based on actual cow calving interval. Seasonal mating is used in all our herds.*
- *Adaptability to our CQ environment based on the strength of both dam and sire.*
- *Temperament.*
- *Ease of calving.*

We believe bulls bred or raised in our area have a higher chance of performing in our environment. We have already assessed and culled those that struggle. This helps take away the potential uncertainty of the adaptability or even survival of bulls bred in cooler and less harsh environments.

For you, the commercial breeder, we have already rejected the bulls that have not adapted to our area, and you can buy with confidence for all of the above desired attributes.

As with all our bulls, they are absolutely guaranteed, and if you ever have an issue with any purchase, simply call us and we will sort a satisfactory outcome.

Bulls can be inspected at 'Kensington' any time up to the sale. Simply call and we will make a suitable time.

Reference AI Sires

JMB Traction 292



Sire: Sitz Top Game 561X

Dam: JMB Emulota 013

One of the new Angus stars from the USA. Jeff saw him in America, together with his Dam and siblings.

Easy keeping types with extra width and constitution that we believe will do a great job in our environment.

Is one of the stand out sires in USA at present, with reportedly over 50,000 units of semen sold in the 2016 USA joining season. Lower birth weights, high growth, and absolute top end EMA measures.

Mid-July 2017 Angus Australia Breedplan												
	Birth Wt.	200 Day	400 Day	600 Day	Mat. Cow	Carcase	EMA	Rib Fat	Rump Fat	Beef Yield	IMF	Milk (kg)
EBV	+4.5	+61	+110	+133	+94	+81	+12.6	-0.3	-1.9	+2.6	+1.3	+29
Acc	96%	93%	90%	89%	80%	77%	75%	76%	72%	68%	73%	73%

SAV Registry 2831



Sire: Rito 707 Of Ideal

Dam: SAV Madame Pride

Again seen in USA, he is a big free moving bull whose sons have sold to \$240,000-\$650,000 at SAV sales in the US. His

progeny are proving to be slightly earlier maturing types with clean bodies and good cover.

Mid-July 2017 Angus Australia Breedplan												
	Birth Wt.	200 Day	400 Day	600 Day	Mat. Cow	Carcase	EMA	Rib Fat	Rump Fat	Beef Yield	IMF	Milk (kg)
EBV	+5.2	+51	+97	+121	+94	+79	+2.7	-1.7	-0.7	+0.6	+0.4	+12
Acc	90%	84%	86%	83%	77%	74%	67%	73%	64%	62%	64%	74%

Reference Herd Sires

Bauhinia Park Net Worth H55



Sire: SAV Net Worth 4200

Dam: Bauhinia Park D300

Net Worth is an AI son of SAV Net Worth from USA. SAV Net Worth is fast becoming a legend of the breed. We loved the first picture we ever saw of SAV Net Worth, and Jeff saw his mature daughters in active duty in the SAV stud in America. Wonderful cows, this is one time when the photo matched the sire, and our resulting Net Worth is a beauty.

1280kg when we took him out of his cows this year, and he has safely calved out heifers.

Mid-July 2017 Angus Australia Breedplan												
	Birth Wt.	200 Day	400 Day	600 Day	Mat. Cow	Carcase	EMA	Rib Fat	Rump Fat	Beef Yield	IMF	Milk (kg)
EBV	+5.5	+46	+82	+106	+97	+61	+4.6	-0.1	-1.2	+0.9	+1.0	+14
Acc	52%	55%	57%	54%	51%	61%	47%	48%	48%	47%	47%	49%

Glenmorgan Thunderbird H248 'Gus'



Sire: SAV Thunderbird 9061

Dam: Wattletop Dandloo A129

'Gus' is the most complete Thunderbird son we have seen, and carries a heap of meat easily all through joining seasons. He covered nearly 100 females during his first 2014 summer, between joining maiden heifers, being borrowed by a neighbour and covering AI programs.

His sons in this sale are a result of that first joining. Gus is now our go to sire to produce quality and consistency. He just doesn't miss.

Mid-July 2017 Angus Australia Breedplan												
	Birth Wt.	200 Day	400 Day	600 Day	Mat. Cow	Carcase	EMA	Rib Fat	Rump Fat	Beef Yield	IMF	Milk (kg)
EBV	+4.7	+51	+90	+115	+94	+67	+5.2	-0.7	-2.6	+1.5	+1.3	+13
Acc	75%	71%	70%	70%	67%	63%	57%	59%	58%	55%	56%	61%

Extended EBV Summary Table for Angus Sale Bulls

Lot No	ID	Calving Ease Dir	Gest. Length	Birth Weight	200 Day Wt	400 Day Wt	600 Day Wt	Mature Wt	Milk	Scrotal Size	Days to Calving	Carcase Wt	EMA	Rib Fat	Rump Fat	RBV %	IMF %	NFI - P	NFI - F
41	ARTL451	-0.3	-4.8	+3.5	+50	+91	+112	+85	+17	+1.8	-2.3	+68	+6.8	-1.4	-2.5	+1.8	+1.7	+0.18	+0.44
42	ARTL456	+0.5	-4.4	+3.1	+52	+97	+117	+84	+18	+1.9	-2.3	+71	+6.0	-0.7	-1.9	+1.4	+1.7	+0.10	+0.27
43	ABWL319	-0.2	-1.1	+5.0	+45	+82	+108	+111	+12	+1.9	-6.6	+63	+4.5	+0.4	+0.2	-0.3	+2.0	+0.14	+0.13
44	ARTL2	+0.1	-2.7	+4.3	+45	+80	+102	+82	+11	+1.5	-	+59	+4.8	-0.3	-1.6	+1.0	+1.6	-	-
45	ARTL13	+0.1	-1.8	+4.5	+44	+79	+101	+85	+12	+1.0	-	+58	+5.5	-0.1	-1.3	+1.0	+1.2	-	-
46	ABWL266	+0.5	-3.0	+3.4	+50	+89	+114	+87	+20	+1.9	-3.4	+67	+8.6	+1.0	-0.8	+1.3	+1.5	+0.15	+0.38
47	ABWL282	-2.6	-2.2	+5.0	+61	+108	+137	+108	+21	+2.0	-3.9	+82	+7.7	+0.6	-1.2	+1.4	+1.1	+0.09	+0.06
48	ABWL224	-0.6	-5.7	+4.5	+58	+102	+128	+104	+21	+1.7	-3.8	+76	+8.9	-0.3	-1.5	+1.9	+1.4	+0.07	0.00
49	ABWL251	-2.8	-1.9	+5.0	+51	+92	+115	+93	+19	+1.9	-4.0	+68	+8.2	-0.5	-1.4	+1.7	+1.6	+0.06	+0.02
50	ABWL353	-0.9	-2.2	+4.0	+54	+98	+121	+91	+21	+2.1	-	+72	+8.2	+0.5	-0.8	+1.4	+1.5	+0.16	+0.24
51	ABWL260	-0.5	-2.1	+3.8	+53	+97	+120	+89	+21	+2.0	-	+71	+8.2	+0.6	-0.7	+1.4	+1.5	+0.16	+0.25
52	ABWL268	-0.8	-3.3	+4.2	+47	+85	+106	+83	+20	+1.6	-3.8	+64	+8.0	-1.2	-1.6	+1.9	+1.5	+0.04	+0.06
53	ARTL389	+0.2	-2.1	+4.3	+44	+84	+105	+79	+12	+1.9	-	+64	+4.0	-0.8	-0.6	+0.6	+1.2	-	-
54	ARTL447	-0.3	-4.8	+3.9	+53	+97	+120	+92	+18	+2.0	-2.3	+73	+6.8	-1.6	-2.7	+1.9	+1.7	+0.18	+0.42
55	ARTL1	+0.4	-3.9	+4.8	+51	+91	+114	+90	+13	+1.9	-2.1	+69	+7.0	+0.7	-1.5	+1.3	+1.4	+0.09	+0.35
56	ARTL16	-2.0	-2.9	+5.3	+47	+85	+105	+89	+16	+2.5	-3.6	+62	+6.4	+0.4	+0.1	+1.2	+1.2	0.00	+0.23
57	ARTL4	+0.1	-2.7	+3.9	+42	+76	+97	+76	+10	+1.3	-	+55	+4.7	-0.2	-1.5	+0.9	+1.6	-	-
58	ARTL44	+1.3	-2.5	+5.1	+43	+80	+107	+91	+18	+1.9	-2.8	+58	+4.8	+0.1	-0.5	+0.8	+1.0	+0.12	+0.36
59	ARTL43	-	-1.0	+5.1	+42	+81	+102	+89	+13	+1.3	-	+59	-	0.0	-	-	-	-	-
60	ARTL35	-	-	-	-	-	-	-	-	-	-	-	-	-	-	-	-	-	-
61	ARTL51	-	-	-	-	-	-	-	-	-	-	-	-	-	-	-	-	-	-
62	ARTL32	-	-	-	-	-	-	-	-	-	-	-	-	-	-	-	-	-	-
63	ARTL362	-0.3	-4.6	+2.6	+47	+83	+102	+68	+17	+1.7	-0.9	+59	+7.2	-1.4	-2.0	+1.9	+1.7	+0.10	+0.37
64	ABWL325	+0.3	-3.5	+4.6	+41	+73	+94	+87	+10	+1.1	-4.7	+52	+5.1	+0.3	-0.3	0.0	+2.3	+0.07	+0.15
65	ARTL237	+0.2	-2.1	+4.3	+44	+83	+105	+80	+11	+1.9	-	+64	+4.0	-0.8	-0.7	+0.6	+1.2	-	-
66	ARTL262	+0.2	-2.2	+4.0	+42	+78	+99	+74	+11	+1.7	-	+60	+4.0	-0.6	-0.5	+0.5	+1.2	-	-
67	ARTL206	+0.2	-2.2	+4.1	+43	+81	+101	+76	+11	+1.8	-	+62	+4.0	-0.7	-0.6	+0.5	+1.2	-	-
68	ARTL6	+1.1	-3.8	+3.6	+47	+85	+104	+80	+18	+1.7	-1.4	+63	+6.0	+0.4	-1.0	+1.2	+1.3	+0.14	+0.31
69	ARTL7	+0.4	-3.2	+4.2	+49	+90	+110	+89	+23	+2.3	-3.9	+67	+5.8	-0.6	-1.6	+1.6	+1.2	0.00	+0.04
70	ARTL20	-	-1.8	+4.9	+44	+81	+103	+88	+12	+1.7	-	+59	-	-0.2	-	-	-	-	-
71	ARTL63	-1.8	-2.4	+5.2	+48	+85	+110	+89	+16	+1.5	-3.2	+66	+5.0	-2.1	-3.5	+1.7	+1.8	-0.10	+0.06
72	ARTM1	+0.2	-5.2	-4.8	+51	+91	+117	+94	+17	+2.2	-3.2	+69	+6.2	-3.5	-3.5	+2.5	+1.7	-0.06	+0.07
73	ARTM2	+3.6	-5.5	+4.4	+43	+80	+105	+88	+13	+2.6	-2.8	+54	+3.7	+0.7	+0.8	-0.2	+2.3	+0.19	+0.39
74	ARTM9	-1.5	-3.7	+5.6	+50	+88	+118	+102	+21	+1.3	-3.2	+65	+5.7	-0.4	-1.4	+0.6	+1.9	+0.16	+0.17
75	ARTM7	-2.5	-2.3	+5.6	+50	+86	+115	+106	+18	+2.8	-3.0	+62	+7.7	-1.3	-1.2	+1.7	+1.8	+0.02	+0.15
76	ARTM6	0.0	-2.2	+4.9	+47	+83	+108	+85	+21	+2.0	-3.3	+61	+4.9	+0.2	-0.5	+0.3	+1.8	+0.14	+0.17
77	ARTM5	-1.1	-3.4	+5.1	+50	+87	+118	+95	+20	+1.6	-3.7	+64	+6.2	-0.4	-0.1	+0.6	+1.8	+0.04	-0.06
78	ARTL71	-0.4	-2.1	+4.0	+44	+76	+101	+84	+14	+0.7	-4.2	+57	+5.3	-1.3	-2.7	+1.8	+0.9	-0.19	-0.17
79	ARTM3	+4.2	-5.7	+3.4	+44	+82	+102	+83	+16	+2.2	-3.7	+58	+4.5	+1.8	+1.2	-0.2	+2.0	+0.19	+0.37
80	NV NK52	-3.2	-3.0	+5.5	+47	+85	+116	+86	+16	+1.2	-4.0	+60	+6.4	+0.2	+0.6	+0.4	+1.8	+0.20	+0.15
Breed Average		+0.0	-3.7	+4.3	+42	+77	+100	+87	+15	+1.7	-3.9	+56	+4.6	+0.0	-0.2	+0.3	+1.6	+0.09	+0.15

Lot 41 Bauhinia Park All In L451 (AI)

Registered APR Bull **ID:** ARTL451
Birth Date: 21/08/15 **Colour:** Black

S: AAR Ten X 7008
Sire: Deer Valley All In 2138
D: Deer Valley Rita 0274

S: Ardrossan Direction W109
Dam: Bauhinia Park E11
D: Glenmorgan

Mid-July 2017 Angus Australia Group Breedplan					
	Birth Wt.	200 Day	400 Day	600 Day	Milk (kg)
EBV	+3.5	+50	+91	+112	+17
Acc	59%	64%	66%	63%	47%

Comments: Nicely shaped bull to start the Angus draft. Thick set, deep and soft with a sires outlook and natural substance. Pedigree suggests suitable for use on heifers.

Top 10% of the breed for 200 day weight and 400 day weight, top 15% for 600 day weight and EMA.

Purchaser: Price: \$.....

Lot 42 Bauhinia Park All In L456 (AI)

Registered APR Bull **ID:** ARTL456
Birth Date: 20/08/15 **Colour:** Black

S: AAR Ten X 7008
Sire: Deer Valley All In 2138
D: Deer Valley Rita 0274

S: KCF Bennett Total
Dam: Bauhinia Park E3
D: Glenmorgan

Mid-July 2017 Angus Australia Group Breedplan					
	Birth Wt.	200 Day	400 Day	600 Day	Milk (kg)
EBV	+3.1	+52	+97	+117	+18
Acc	58%	62%	65%	62%	45%

Comments: Long and clean with a good head. Super active and ready to work. All In provides a unique blend of growth, performance and low birth weight. Pedigree suggests suitable for use on heifers.

Top 5% of the breed for 200 day weight, top 10% for 400 day weight, top 15% for 600 day weight and top 20% for birth weight and milk.

Purchaser: Price: \$.....

Lot 43 Bauhinia Park Berkley L319



Registered APR Bull **ID:** ABWL319
Birth Date: 04/09/15 **Colour:** Black

S: Te Mania Berkley B1
Sire: Kansas Berkley G13
D: Kansas Panda X11

S: Wattletop Andy C109
Dam: Wattletop G287
D: Wattletop Y359

Mid-July 2017 Angus Australia Group Breedplan					
	Birth Wt.	200 Day	400 Day	600 Day	Milk (kg)
EBV	+5.0	+45	+82	+108	+12
Acc	73%	60%	58%	61%	46%

Comments: This bull just gets better every day. Standout in the mob for length, growth and style. Even cover and muscle pattern, always in good condition. His extra scale allows him to cover country easily.

Purchaser: Price: \$.....

Lot 44 Bauhinia Park Thunderbird L12



Registered APR Bull **ID:** ARTL12
Birth Date: 20/08/15 **Colour:** Black

S: S A V Thunderbird 9061
Sire: Glenmorgan Thunderbird Man H248
D: Wattletop Dandloo A129

S: SAV Heritage 6295
Dam: Bauhinia Park H50 (AI)
D: Bauhinia Park D310

Mid-July 2017 Angus Australia Group Breedplan					
	Birth Wt.	200 Day	400 Day	600 Day	Milk (kg)
EBV	+4.8	+49	+86	+108	+14
Acc	49%	56%	57%	52%	40%

Comments: First Gus son to be offered through the sale ring with many more to come. This bull will match it with any Euro - awesome big, long meat machine with great feet and legs.

Purchaser: Price: \$.....

Lot 45 Bauhinia Park Thunderbird L13

Registered MBR Bull **ID:** ARTL13
Birth Date: 22/08/15 **Colour:** Black

S: S A V Thunderbird 9061
Sire: Glenmorgan Thunderbird Man H248
D: Wattletop Dandloo A129

S: Rosedale F2
Dam: Bauhinia Park H166
D: Bauhinia Park D348

Mid-July 2017 Angus Australia Group Breedplan					
	Birth Wt.	200 Day	400 Day	600 Day	Milk (kg)
EBV	+4.5	+44	+79	+101	+12
Acc	44%	53%	55%	49%	35%

Comments: Heaviest bull in the mob. This big, beefy Gus son will throw some serious weight into his weaners. His EBV's should be better than they are and will improve in the next group breedplan run.

Purchaser: Price: \$.....

Lot 46 Bauhinia Park Traction L266 (AI)

Registered APR Bull **ID:** ABWL266
Birth Date: 16/08/15 **Colour:** Black

S: Sitz Top Game 561X
Sire: JMB Traction 292
D: JMB Emulota 013

S: SAV Final Answer 0035
Dam: Glenmorgan Final Answer Lady F26
D: Wattletop D330

Mid-July 2017 Angus Australia Group Breedplan					
	Birth Wt.	200 Day	400 Day	600 Day	Milk (kg)
EBV	+3.4	+50	+89	+114	+20
Acc	73%	63%	60%	62%	45%

Comments: The first of an impressive run of Traction sons. Made square with extra growth, bone and thickness. We think a lot of this bull.

Top 5% of the breed for EMA, top 10% for 200 day weight, top 15% for 400 and 600 day weight.

Purchaser: Price: \$.....

Lot 47 Bauhinia Park Traction L282 (AI)



Registered APR Bull **ID:** ABWL282
Birth Date: 18/08/15 **Colour:** Black

Sire: **S:** Sitz Top Game 561X
 D: JMB Traction 292
 D: JMB Emulota 013

Dam: **S:** SAV Thunderbird 9061
 D: Glenmorgan Thunderbird Lady G116
 D: Glenmorgan D24

Mid-July 2017 Angus Australia Group Breedplan					
	Birth Wt.	200 Day	400 Day	600 Day	Milk (kg)
EBV	+5.0	+61	+108	+137	+21
Acc	74%	64%	61%	63%	46%

Comments: Sired by Traction out of a quality Thundebird cow (dominant sire over the past 3 years). Eye appealing bull that gained some good comments from cattlemen whilst on display at Ag-Grow. Chasing a bull with leading performance EBV's? Here he is.

Top 1% of the breed for 200, 400 and 600 day weights, top 10% for EMA, top 15% for mature cow weight and milk.

Purchaser: Price: \$.....

Lot 48 Bauhinia Park Traction L224 (AI)



Registered APR Bull **ID:** ABWL224
Birth Date: 12/08/15 **Colour:** Black

Sire: **S:** Sitz Top Game 561X
 D: JMB Traction 292
 D: JMB Emulota 013

Dam: **S:** SAV Thunderbird 9061
 D: Glenmorgan Thunderbird Lady G132
 D: Wattletop Usual C62

Mid-July 2017 Angus Australia Group Breedplan					
	Birth Wt.	200 Day	400 Day	600 Day	Milk (kg)
EBV	+4.5	+58	+102	+128	+21
Acc	74%	64%	61%	62%	46%

Comments: Another Traction/Thunderbird cross. Super smooth with a heap of length, finishing ability and shiny coat. Pedigree suggests suitable for use on heifers.

Top 1% of the breed for 200 and 400 day weights, top 5% for 600 day weight and EMA, top 10% for milk.

Purchaser: Price: \$.....

Lot 49 Bauhinia Park Traction L251 (AI)

Registered APR Bull **ID:** ABWL251
Birth Date: 16/08/15 **Colour:** Black

Sire: S: Sitz Top Game 561X
 JMB Traction 292
 D: JMB Emulota 013

Dam: S: Glenmorgan Bando D5
 Glenmorgan Bando Lady H237
 D: Wattletop Ann D311

Mid-July 2017 Angus Australia Group Breedplan					
	Birth Wt.	200 Day	400 Day	600 Day	Milk (kg)
EBV	+5.0	+51	+92	+115	+19
Acc	73%	61%	58%	59%	42%

Comments: Great doer, always fat and shiny. Super active with loads of breed character on a moderate frame.

Top 10% of the breed for 200 and 400 day weights and EMA, top 15% for 600 day weight and milk.

Purchaser: Price: \$.....

Lot 50 Bauhinia Park Traction L353 (AI)

Registered APR Bull **ID:** ABWL353
Birth Date: 14/08/15 **Colour:** Black

Sire: S: Sitz Top Game 561X
 JMB Traction 292
 D: JMB Emulota 013

Dam: S: Connealy Right Answer
 Glenmorgan H174
 D: Glenmorgan

Mid-July 2017 Angus Australia Group Breedplan					
	Birth Wt.	200 Day	400 Day	600 Day	Milk (kg)
EBV	+4.0	+54	+98	+121	+21
Acc	69%	58%	55%	55%	40%

Comments: This Traction son packs some serious punch. Broad fronted with thickness throughout and a big hindquarter. Long and clean with defined eye muscle. Pedigree suggests suitable for use on heifers.

Top 5% of the breed for 200 and 400 day weights and EMA, top 10% for 600 day weight and milk.

Purchaser: Price: \$.....

Lot 51 Bauhinia Park Traction L260 (AI)



Registered APR Bull **ID:** ABWL260
Birth Date: 15/08/15 **Colour:** Black

Sire: **S:** Sitz Top Game 561X
 JMB Traction 292
 D: JMB Emulota 013

Dam: **S:** Connealy Right Answer
 Glenmorgan H163
 D: Glenmorgan

Mid-July 2017 Angus Australia Group Breedplan					
	Birth Wt.	200 Day	400 Day	600 Day	Milk (kg)
EBV	+3.8	+53	+97	+120	+21
Acc	69%	58%	55%	55%	40%

Comments: 3/4 brother to the previous lot. Naturally super quiet, can walk up and give him a scratch in the paddock. Pedigree suggests suitable for use on heifers.

Top 5% of the breed for 200 and 400 day weights and EMA, top 10% for 600 day weight and milk.

Purchaser: Price: \$.....

Lot 52 Bauhinia Park Traction L268 (AI)



Registered APR Bull **ID:** ABWL268
Birth Date: 16/08/15 **Colour:** Black

Sire: **S:** Sitz Top Game 561X
 JMB Traction 292
 D: JMB Emulota 013

Dam: **S:** Wattletop Highmark B15
 Wattletop Usual D275
 D: Wattletop Usual A57

Mid-July 2017 Angus Australia Group Breedplan					
	Birth Wt.	200 Day	400 Day	600 Day	Milk (kg)
EBV	+4.2	+47	+85	+106	+20
Acc	74%	63%	61%	62%	46%

Comments: Well rounded Traction son with constitution to burn. Free moving meat machine with a good sound structure. Pedigree suggests suitable for use on heifers.

Top 10% of the breed for milk and EMA.

Purchaser: Price: \$.....

Lot 53 Bauhinia Park Registry L389 (AI)



Registered APR Bull **ID:** ARTL389
Birth Date: 05/09/15 **Colour:** Black

Sire: **S:** Rito 707 Of Ideal
 SAV Registry 2831
D: SAV Madame Prime 0075

Dam: **S:** Bennett Total
 Bauhinia Park E12
D: Glemorgan

Mid-July 2017 Angus Australia Group Breedplan					
	Birth Wt.	200 Day	400 Day	600 Day	Milk (kg)
EBV	+4.3	+44	+84	+105	+12
Acc	49%	54%	59%	54%	35%

Comments: First of the Registry's to be offered. Another bull that keeps on getting better. Solid, thickset type with defined hindquarters.

Purchaser: Price: \$.....

Lot 54 Bauhinia Park All In L447 (AI)

Registered APR Bull **ID:** ARTL447
Birth Date: 23/09/15 **Colour:** Black

Sire: **S:** AAR Ten X 7008
 Deer Valley All In 2138
D: Deer Valley Rita 0274

Dam: **S:** Ardrossan Direction W109
 Bauhinia Park E22
D: Glenmorgan

Mid-July 2017 Angus Australia Group Breedplan					
	Birth Wt.	200 Day	400 Day	600 Day	Milk (kg)
EBV	+3.9	+53	+97	+120	+18
Acc	58%	62%	65%	62%	45%

Comments: Long as a train, clean coated and full of softness. Pedigree suggests suitable for use on heifers.

Top 5% of the breed for 200 and 400 day weights, top 10% for 600 day weight, top 15% for EMA.

Purchaser: Price: \$.....

Lot 55 Bauhinia Park Thunderbird L1

Registered APR Bull **ID:** ARTL1
Birth Date: 10/08/15 **Colour:** Black

Sire: **S:** SAV Thunderbird 9061
 Glenmorgan Thunderbird Man H248
D: Wattletop Dandloo A129

Dam: **S:** SAV Pioneer
 Bauhinia Park H51
D: Bauhinia Park D311

Mid-July 2017 Angus Australia Group Breedplan					
	Birth Wt.	200 Day	400 Day	600 Day	Milk (kg)
EBV	+4.8	+51	+91	+114	+13
Acc	50%	56%	58%	53%	41%

Comments: Real curve bending gus son, born small and has grown into a big heavy bull. Suitable for use on heifers.

Top 10% of the breed for 200 and 400 day weights, top 15% for 600 day weight and EMA.

Purchaser: Price: \$.....

Lot 56 Bauhinia Park Prosperity L16 (AI)



Registered APR Bull **ID:** ARTL16
Birth Date: 24/08/15 **Colour:** Black

Sire: **S:** SAV Providence 6922
 SAV Prosperity 9131
D: SAV Emblynnette 3123

Dam: **S:** Rosevale B37
 Rosevale E67
D: Rosevale C87

Mid-July 2017 Angus Australia Group Breedplan					
	Birth Wt.	200 Day	400 Day	600 Day	Milk (kg)
EBV	+5.3	+47	+85	+105	+16
Acc	62%	65%	66%	64%	49%

Comments: An AI son from high performance sire SAV Prosperity. Extra length and strength with a good outlook.

Top 20% of the breed for EMA.

Purchaser: Price: \$.....

Lot 57 Bauhinia Park Thunderbird L4

Registered APR Bull **ID:** ARTL4
Birth Date: 16/08/15 **Colour:** Black

Sire: **S:** SAV Thunderbird 9061
 Glenmorgan Thunderbird Man H248
D: Wattletop Dandloo A129

Dam: **S:** Glenmorgan Bando
 Bauhinia Park H16
D: Glenmorgan

Mid-July 2017 Angus Australia Group Breedplan					
	Birth Wt.	200 Day	400 Day	600 Day	Milk (kg)
EBV	+3.9	+42	+76	+96	+10
Acc	43%	52%	54%	48%	34%

Comments: A heifer's first calf who returned cycle quickly. Suitable for use on heifers.

Lot 58 Bauhinia Park Net Worth L44

Registered APR Bull **ID:** ARTL44
Birth Date: 02/10/15 **Colour:** Black

Sire: **S:** SAV Net Worth 4200
 Bauhinia Park Net Worth H55
D: Bauhinia Park D300

Dam: **S:** Carabar Docklands
 Bauhinia Park H26
D: Kansas Farmers Daughter A69

Mid-July 2017 Angus Australia Group Breedplan					
	Birth Wt.	200 Day	400 Day	600 Day	Milk (kg)
EBV	+5.1	+43	+80	+107	+18
Acc	46%	54%	58%	53%	41%

Comments: First son to be offered by home bred beauty Net Worth H55. Note his age, was a very impressive weaner.

Purchaser: Price: \$..... Purchaser: Price: \$.....

Lot 59 Bauhinia Park Net Worth L43



Registered MBR Bull **ID:** ARTL43
Birth Date: 01/10/15 **Colour:** Black

S: SAV Net Worth 4200
Sire: Bauhinia Park Net Worth H55
D: Bauhinia Park D300

S: Dulverton Zing Z135
Dam: Bauhinia Park G22
D: Bauhinia Park D353

Mid-July 2017 Angus Australia Group Breedplan					
	Birth Wt.	200 Day	400 Day	600 Day	Milk (kg)
EBV	+5.1	+42	+81	+102	+13
Acc	35%	47%	52%	45%	27%

Comments: Always one of the first to catch your eye. Another Net Worth H55 son with his sire's power and substance. One of the best weight gains in the Angus draft and moves across the paddock with ease.

Purchaser: Price: \$.....

Lot 60 Bauhinia Park Fair Dinkum L35

Herd Bull **ID:** L35
Birth Date: 23/09/15 **Colour:** Black

S: Double D Fair Dinkum C8
Sire: Dance Fair Dinkum H243
D: Dance F238

S: Rennylea Xponential X555
Dam: Rosevale D4
D: Rosevale A82

Mid-July 2017 Angus Australia Group Breedplan					
	Birth Wt.	200 Day	400 Day	600 Day	Milk (kg)
EBV	-	-	-	-	-
Acc	-	-	-	-	-

Comments: Sire was purchased from the Dance stud in 2014 for his impressive robust phenotype. Unfortunately we lost him early in his career. 3 sons sell in this sale.

Lot 61 Bauhinia Park Fair Dinkum L51

Herd Bull **ID:** L51
Birth Date: 15/10/15 **Colour:** Black

S: Double D Fair Dinkum C8
Sire: Dance Fair Dinkum H243
D: Dance F238

S: Dulverton Zing Z135
Dam: Bauhinia Park D334
D: Bauhinia Park

Mid-July 2017 Angus Australia Group Breedplan					
	Birth Wt.	200 Day	400 Day	600 Day	Milk (kg)
EBV	-	-	-	-	-
Acc	-	-	-	-	-

Comments: Strong fronted young bull with a deep flank, ample growth and easy fleshing.

Purchaser: Price: \$..... Purchaser: Price: \$.....

Lot 62 Bauhinia Park Fair Dinkum L32

Herd Bull ID: L32
 Birth Date: 15/09/15 Colour: Black

S: Double D Fair Dinkum C8
 Sire: Dance Fair Dinkum H243
 D: Dance F238

S: GAR Yield Grade
 Dam: Lawsons GAR Yield Grade A558
 D: Lawsons GAR Bushwacker Y1097

Mid-July 2017 Angus Australia Group Breedplan					
	Birth Wt.	200 Day	400 Day	600 Day	Milk (kg)
EBV	-	-	-	-	-
Acc	-	-	-	-	-

Comments: Possibly the best doer in the Angus run. Unreal weight and feed conversion in this deep sided Dance son. Shiny coat to boot.

Purchaser: Price: \$.....

Lot 63 Bauhinia Park All In L362 (AI)

Registered APR Bull ID: ARTL362
 Birth Date: 22/08/15 Colour: Black

S: AAR Ten X 7008
 Sire: Deer Valley All In 2138
 D: Deer Valley Rita 0274

S: Ardrossan Connection X15
 Dam: Bauhinia Park E56
 D: Glenmorgan

Mid-July 2017 Angus Australia Group Breedplan					
	Birth Wt.	200 Day	400 Day	600 Day	Milk (kg)
EBV	+2.6	+47	+83	+102	+17
Acc	59%	64%	65%	63%	47%

Comments: Another good doer, pedigree suggests suitable for use on heifers.

Top 15% of the breed for birth weight and EMA.

Purchaser: Price: \$.....

Lot 64 Bauhinia Park Emperor L325

Registered APR Bull ID: ABWL325
 Birth Date: 06/09/15 Colour: Black

S: Te Mania Emperor E343
 Sire: Millah Murrah Emperor J79
 D: Millah Murrah Flower D77

S: Wattletop Y/Stone Z121
 Dam: Wattletop Ann D311
 D: Wattletop Ann Z221

Mid-July 2017 Angus Australia Group Breedplan					
	Birth Wt.	200 Day	400 Day	600 Day	Milk (kg)
EBV	+4.6	+41	+73	+94	+10
Acc	70%	57%	55%	57%	43%

Comments: Stems from some of the most sought after bloodlines in the Angus Industry. Long and clean with a gentle disposition.

Purchaser: Price: \$.....

Lot 65 Bauhinia Park Registry L237 (AI)

Registered APR Bull ID: ARTL237
 Birth Date: 30/08/15 Colour: Black

S: Rito 707 Of Ideal
 Sire: SAV Registry 2831
 D: SAV Madame Prime 0075

S: Bennett Total
 Dam: Bauhinia Park E6
 D: Glenmorgan

Mid-July 2017 Angus Australia Group Breedplan					
	Birth Wt.	200 Day	400 Day	600 Day	Milk (kg)
EBV	+4.3	+44	+83	+105	+11
Acc	49%	53%	59%	54%	35%

Comments: Thickset, beefy nugget. Super active. Suitable for use on heifers.

Purchaser: Price: \$.....

Lot 66 Bauhinia Park Registry L262 (AI)

Registered APR Bull **ID:** ARTL262
Birth Date: 02/09/15 **Colour:** Black

S: Rito 707 Of Ideal
Sire: SAV Registry 2831
D: SAV Madame Prime 0075

S: Bennett Performer
Dam: Bauhinia Park E13
D: Glemorgan

Mid-July 2017 Angus Australia Group Breedplan					
	Birth Wt.	200 Day	400 Day	600 Day	Milk (kg)
EBV	+4.0	+42	+78	+99	+11
Acc	51%	57%	59%	55%	38%

Comments: Moderate framed Registry son with a sound structure and good shape. Pedigree suggests suitable for use on heifers.

Purchaser: Price: \$.....

Lot 67 Bauhinia Park Registry L206 (AI)

Registered APR Bull **ID:** ARTL206
Birth Date: 28/08/15 **Colour:** Black

S: Rito 707 Of Ideal
Sire: SAV Registry 2831
D: SAV Madame Prime 0075

S: Speriby North
Dam: Bauhinia Park E134
D: Speriby North

Mid-July 2017 Angus Australia Group Breedplan					
	Birth Wt.	200 Day	400 Day	600 Day	Milk (kg)
EBV	+4.1	+43	+81	+101	+11
Acc	51%	57%	59%	55%	38%

Comments: Long and clean, stoutly made with a sires head. Pedigree suggests suitable for use on heifers.

Purchaser: Price: \$.....

Lot 68 Bauhinia Park Upward L6 (AI)

Registered APR Bull **ID:** ARTL6
Birth Date: 18/08/15 **Colour:** Black

Sire: **S:** Connealy Onward
 Sitz Upward 307R
D: Sitz Henrietta Pride

Dam: **S:** Hazeldean Sire
 Bauhinia Park G32
D: Bauhinia Park E356

Mid-July 2017 Angus Australia Group Breedplan					
	Birth Wt.	200 Day	400 Day	600 Day	Milk (kg)
EBV	+3.6	+47	+85	+104	+18
Acc	54%	61%	62%	58%	53%

Comments: Born small, grow fast. Sitz Upward has had a strong influence on the breed. Suitable for use on heifers.

Top 20% of the breed for milk.

Purchaser: Price: \$.....

Lot 69 Bauhinia Park Upward L7 (AI)

Registered APR Bull **ID:** ARTL7
Birth Date: 20/08/15 **Colour:** Black

Sire: **S:** Connealy Onward
 Sitz Upward 307R
D: Sitz Henrietta Pride

Dam: **S:** Black Label X15 Connection
 Rosevale D18
D: Rosevale A4

Mid-July 2017 Angus Australia Group Breedplan					
	Birth Wt.	200 Day	400 Day	600 Day	Milk (kg)
EBV	+4.2	+49	+90	+110	+23
Acc	64%	66%	68%	66%	58%

Comments: Very active and mobile. Suitable for use on heifers.

Top 5% of the breed for milk.

Purchaser: Price: \$.....

Lot 70 Bauhinia Park Net Worth L20

Registered APR Bull **ID:** ARTL20
Birth Date: 15/10/15 **Colour:** Black

Sire: **S:** SAV Net Worth
 Bauhinia Park Net Worth H55
D: Bauhinia Park D300

Dam: **S:** Hazeldean Sire
 Bauhinia Park G53
D: Bauhinia Park E254

Mid-July 2017 Angus Australia Group Breedplan					
	Birth Wt.	200 Day	400 Day	600 Day	Milk (kg)
EBV	+4.9	+44	+81	+103	+12
Acc	35%	48%	52%	45%	29%

Comments: Power pack with an awesome constitution. Will hold his shape easily through dry pinches. Suitable for use on heifers.

Purchaser: Price: \$.....

Lot 71 Bauhinia Park Thunderbird L63

Registered HBR Bull **ID:** ARTL63
Birth Date: 08/12/15 **Colour:** Black

Sire: **S:** SAV Thunderbird 9061
 Glenmorgan Thunderbird Man H248
D: Wattletop Dandloo A129

Dam: **S:** Kansas Overlander
 Kansas Twiggy D134
D: Kansas Twiggy Z109

Mid-July 2017 Angus Australia Group Breedplan					
	Birth Wt.	200 Day	400 Day	600 Day	Milk (kg)
EBV	+5.2	+48	+85	+110	+16
Acc	56%	56%	59%	57%	45%

Comments: Younger Gus son out of a cow highly regarded cow in our herd. Top weight for age.

Top 20% for 200 day weight.

Purchaser: Price: \$.....

Lot 72 Bauhinia Park Ten Speed M1 (AI)

Registered HBR Bull **ID:** ARTM1
Birth Date: 04/02/16 **Colour:** Black

Sire: **S:** AAR Ten X 7008
SAV Ten Speed 3022
D: SAV Madame Pride 1134

Dam: **S:** Kansas Overlander
Kansas Heart E202
D: Kansas Heart A37

Mid-July 2017 Angus Australia Group Breedplan					
	Birth Wt.	200 Day	400 Day	600 Day	Milk (kg)
EBV	+4.8	+51	+91	+117	+17
Acc	64%	63%	65%	61%	48%

Comments: First of a strong offering of 18 month old bulls. Use them lightly this year and gain an extra season of service in the long run. Ten Speed is making his mark on the breed in the US and we can see why. Great weight for age with growth, depth and softness.

Top 5% of the Breed for 600 Day Weight, top 10% for 200 and 400 Day Weights.

Purchaser: Price: \$.....



*Pictured: SAV Ten Speed 3022,
Sire of Lot 72.*

Lot 73 Bauhinia Park Reality M2 (AI)

Registered HBR Bull **ID:** ARTM2
Birth Date: 04/02/16 **Colour:** Black

Sire: **S:** Schurrtop Reality
Matauri Reality 839
D: Matauri 06663

Dam: **S:** Kansas Overlander
Kansas Powderpuff E238
D: Kansas Powderpuff V112

Mid-July 2017 Angus Australia Group Breedplan					
	Birth Wt.	200 Day	400 Day	600 Day	Milk (kg)
EBV	+4.4	+43	+80	+105	+13
Acc	64%	65%	68%	66%	58%

Comments: Reality was in the top three sires for progeny registrations in Australia last year. Impressive since a calf. Pedigree suggests suitable for use on heifers.

Purchaser: Price: \$.....

Lot 74 Bauhinia Park Aberdeen M9

Registered HBR Bull **ID:** ARTM9
Birth Date: 15/02/16 **Colour:** Black

Sire: **S:** TC Aberdeen 759
Kansas Aberdeen F84
D: Kansas Annie D62

Dam: **S:** Ardrossan Admiral A2
Kansas Spice Girl E192
D: Kansas Spice Girl B172

Mid-July 2017 Angus Australia Group Breedplan					
	Birth Wt.	200 Day	400 Day	600 Day	Milk (kg)
EBV	+5.6	+50	+88	+118	+21
Acc	62%	62%	66%	62%	48%

Comments: Strong head and extra volume in this youngster.

Top 10% of the breed for 200 day weight and milk, top 15% for 400 and 600 day weights.

Purchaser: Price: \$.....

Lot 75 Bauhinia Park Evidently M7



Registered HBR Bull **ID:** ARTM7
Birth Date: 10/02/16 **Colour:** Black

S: Dunoon Evident E614
Sire: Kansas Evidently J81
D: Kansas Annie E109

S: Kansas Aberdeen F84
Dam: Kansas Fancy J139
D: Kansas Fancy F42

Mid-July 2017 Angus Australia Group Breedplan					
	Birth Wt.	200 Day	400 Day	600 Day	Milk (kg)
EBV	+5.6	+50	+86	+115	+18
Acc	61%	62%	65%	59%	42%

Comments: Quality young bull here. Length and style on a well balanced, near perfect feet and legs.

Top 10% of the breed for 200 day weight and EMA, top 20% for 400 and 600 day weights and milk.

Purchaser: Price: \$.....

Lot 76 Bauhinia Park Aberdeen M6



Registered HBR Bull **ID:** ARTM6
Birth Date: 10/02/16 **Colour:** Black

S: TC Aberdeen 759
Sire: Kansas Aberdeen F84
D: Kansas Annie D62

S: Sitz Alliance 6595
Dam: Kansas Panda F151
D: Kansas Panda Y58

Mid-July 2017 Angus Australia Group Breedplan					
	Birth Wt.	200 Day	400 Day	600 Day	Milk (kg)
EBV	+4.9	+47	+83	+108	+21
Acc	62%	62%	65%	62%	49%

Comments: From a very functional cow that goes in calf quickly and produces lots of milk. Gain fertility without sacrificing shape and quality. Don't overlook this young bull.

Top 10% of the breed for milk.

Purchaser: Price: \$.....

Lot 77 Bauhinia Park Aberdeen M5

Registered HBR Bull **ID:** ARTM5
Birth Date: 06/02/16 **Colour:** Black

S: TC Aberdeen 759
Sire: Kansas Aberdeen F84
D: Kansas Annie D62

S: The Grange Wheel Wright D6
Dam: Kansas Waggon F124
D: Kansas Heart C68

Mid-July 2017 Angus Australia Group Breedplan					
	Birth Wt.	200 Day	400 Day	600 Day	Milk (kg)
EBV	+5.1	+50	+87	+118	+20
Acc	62%	62%	65%	62%	48%

Comments: Honest and quiet sound bull that holds his condition well.

Top 10% of the breed for 200 and 600 day weights and milk, top 15% for 400 day weight.

Purchaser: Price: \$.....

Lot 78 Bauhinia Park Thunderbird L71

Registered HBR Bull **ID:** ARTL71
Birth Date: 01/12/15 **Colour:** Black

S: SAV Thunderbird 9061
Sire: Glenmorgan Thunderbird Man H248
D: Wattletop Dandloo A129

S: GAR 1407 New Design 5752
Dam: Lawsons Casper A1205
D: Lawsons New Design Y583

Mid-July 2017 Angus Australia Group Breedplan					
	Birth Wt.	200 Day	400 Day	600 Day	Milk (kg)
EBV	+4.0	+44	+76	+101	+14
Acc	55%	53%	53%	53%	48%

Comments: Long Gus son with a well noted pedigree.

Purchaser: Price: \$.....

Lot 79 Bauhinia Park Thunderbird M3

Herd Bull **ID:** M3
Birth Date: 05/01/16 **Colour:** Black

S: SAV Thunderbird 9061
Sire: Glenmorgan Thunderbird Man H248
D: Wattletop Dandloo A129

S: Hazeldean Sire
Dam: Bauhinia Park F166
D: Bauhinia Park

Mid-July 2017 Angus Australia Group Breedplan					
	Birth Wt.	200 Day	400 Day	600 Day	Milk (kg)
EBV	-	-	-	-	-
Acc	-	-	-	-	-

Comments: Last of the Gus sons for this years sale. Deep chested youngster displaying good weight for age.

Purchaser: Price: \$.....

Lot 80 XLBeef Dulcify K52 (AI)

Registered HBR Bull **ID:** NVNK52
Birth Date: 27/08/14 **Colour:** Black

S: Booroomooka Dulcify D98
Sire: Karoo D98 Dulcify G108
D: Tuwharetoa C14

S: Sitz New Design 458N
Dam: Anguru Goldie G43
D: Anguru Brigett B3

Mid-July 2017 Angus Australia Group Breedplan					
	Birth Wt.	200 Day	400 Day	600 Day	Milk (kg)
EBV	+5.5	+47	+85	+116	+16
Acc	74%	68%	67%	65%	53%

Comments: Purchased last year to be a walking sire after AI programs. We were impressed with his length, mobility and balanced EBV's. Only offered for sale to make room for some exciting new sires.

Top 20% for 600 day weight and EMA.

Purchaser: Price: \$.....

2016 BAUHINIA PARK ANNUAL SALE



2016 BAUHINIA PARK ANNUAL SALE



Notes

[illegible]

Sale Summary

Charolais Bulls

Gross:

Average:

Top:

Angus Bulls

Gross:

Average:

Top:

Sale Totals

Gross:

Average:



***The Holzwart Family of Bauhinia Park Charolais & Angus
would like to thank you for your attendance and we wish
you all the success with your purchases.***



Lot 1 (P)



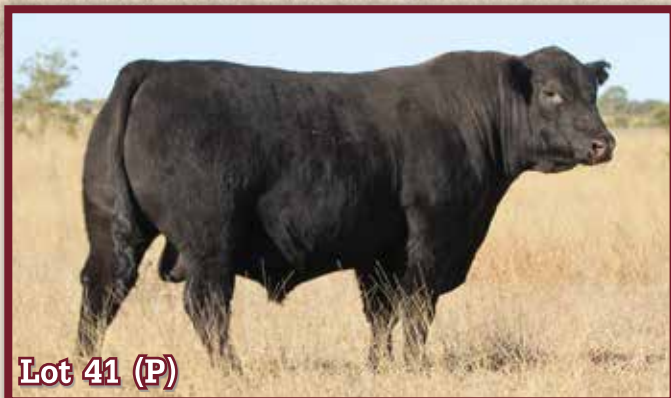
Lot 2



Lot 5 (P)



Lot 32



Lot 41 (P)



Lot 43 (P)



Lot 47 (P)



Lot 50 (P)